

**BCL2L12 Antibody (N-term)**  
**Affinity Purified Rabbit Polyclonal Antibody (Pab)**  
**Catalog # AP19139a**

**Specification**

**BCL2L12 Antibody (N-term) - Product Information**

Application	WB,E
Primary Accession	<a href="#">Q9HB09</a>
Other Accession	<a href="#">NP_001035758.1</a>
Reactivity	Human
Host	Rabbit
Clonality	Polyclonal
Isotype	Rabbit Ig
Calculated MW	36821
Antigen Region	19-45

**BCL2L12 Antibody (N-term) - Additional Information**

**Gene ID** 83596

**Other Names**

Bcl-2-like protein 12, Bcl2-L-12,  
Bcl-2-related proline-rich protein, BCL2L12,  
BPR

**Target/Specificity**

This BCL2L12 antibody is generated from rabbits immunized with a KLH conjugated synthetic peptide between 19-45 amino acids from the N-terminal region of human BCL2L12.

**Dilution**

WB~~1:1000

**Format**

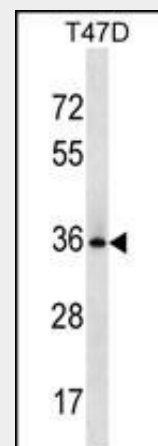
Purified polyclonal antibody supplied in PBS with 0.09% (W/V) sodium azide. This antibody is purified through a protein A column, followed by peptide affinity purification.

**Storage**

Maintain refrigerated at 2-8°C for up to 2 weeks. For long term storage store at -20°C in small aliquots to prevent freeze-thaw cycles.

**Precautions**

BCL2L12 Antibody (N-term) is for research



BCL2L12 Antibody (N-term) (Cat. #AP19139a) western blot analysis in T47D cell line lysates (35ug/lane). This demonstrates the BCL2L12 antibody detected the BCL2L12 protein (arrow).

**BCL2L12 Antibody (N-term) - Background**

The protein encoded by this gene belongs to the BCL-2 protein family. BCL-2 family members form hetero- or homodimers and act as anti- or pro-apoptotic regulators that are involved in a wide variety of cellular activities. This protein contains a Bcl-2 homology domain 2 (BH2). The function of this gene has not yet been determined. Two alternatively spliced transcript variants of this gene encoding distinct isoforms have been reported. [provided by RefSeq].

**BCL2L12 Antibody (N-term) - References**

Bailey, S.D., et al. Diabetes Care 33(10):2250-2253(2010)  
Florou, D., et al. Biochem. Biophys. Res. Commun. 391(1):214-218(2010)  
Hong, Y., et al. Mol. Cell. Biochem. 333 (1-2),

use only and not for use in diagnostic or therapeutic procedures.

#### **BCL2L12 Antibody (N-term) - Protein Information**

**Name** BCL2L12

**Synonyms** BPR

#### **Tissue Location**

Expressed mainly in breast, thymus, prostate, fetal liver, colon, placenta, pancreas, small intestine, spinal cord, kidney, and bone marrow and to a lesser extent in many other tissues. Isoform 2 is primarily expressed in skeletal muscle

323-330 (2010) :

Talmud, P.J., et al. Am. J. Hum. Genet. 85(5):628-642(2009)

Thomadaki, H., et al. Ann. N. Y. Acad. Sci. 1171, 276-283 (2009) :

#### **BCL2L12 Antibody (N-term) - Protocols**

Provided below are standard protocols that you may find useful for product applications.

- [Western Blot](#)
- [Blocking Peptides](#)
- [Dot Blot](#)
- [Immunohistochemistry](#)
- [Immunofluorescence](#)
- [Immunoprecipitation](#)
- [Flow Cytometry](#)
- [Cell Culture](#)