

**APC Antibody (Center)**  
**Affinity Purified Rabbit Polyclonal Antibody (Pab)**  
**Catalog # AP19274c**

**Specification**

**APC Antibody (Center) - Product Information**

Application	WB,E
Primary Accession	<a href="#">P25054</a>
Other Accession	<a href="#">NP_000029.2</a>
Reactivity	Mouse
Host	Rabbit
Clonality	Polyclonal
Isotype	Rabbit Ig
Antigen Region	1148-1176

**APC Antibody (Center) - Additional Information**

**Gene ID** 324

**Other Names**

Adenomatous polyposis coli protein, Protein APC, Deleted in polyposis 25, APC, DP25

**Target/Specificity**

This APC antibody is generated from rabbits immunized with a KLH conjugated synthetic peptide between 1148-1176 amino acids from the Central region of human APC.

**Dilution**

WB~~1:1000

**Format**

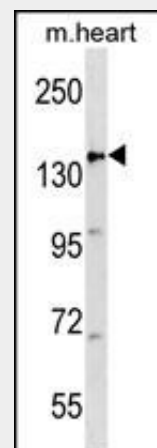
Purified polyclonal antibody supplied in PBS with 0.09% (W/V) sodium azide. This antibody is purified through a protein A column, followed by peptide affinity purification.

**Storage**

Maintain refrigerated at 2-8°C for up to 2 weeks. For long term storage store at -20°C in small aliquots to prevent freeze-thaw cycles.

**Precautions**

APC Antibody (Center) is for research use only and not for use in diagnostic or therapeutic procedures.



APC Antibody (Center)(Cat. #AP19274c) western blot analysis in mouse heart tissue lysates (35ug/lane). This demonstrates the APC antibody detected the APC protein (arrow).

**APC Antibody (Center) - Background**

This gene encodes a tumor suppressor protein that acts as an antagonist of the Wnt signaling pathway. It is also involved in other processes including cell migration and adhesion, transcriptional activation, and apoptosis. Defects in this gene cause familial adenomatous polyposis (FAP), an autosomal dominant pre-malignant disease that usually progresses to malignancy. Disease-associated mutations tend to be clustered in a small region designated the mutation cluster region (MCR) and result in a truncated protein product.

**APC Antibody (Center) - References**

Chung, K.H., et al. J Neurosurg Pediatr 6(4):372-376(2010)  
Rai, K., et al. Cell 142(6):930-942(2010)

**APC Antibody (Center) - Protein Information****Name** APC ([HGNC:583](#))**Synonyms** DP2.5**Function**

Tumor suppressor. Promotes rapid degradation of CTNNB1 and participates in Wnt signaling as a negative regulator. APC activity is correlated with its phosphorylation state. Activates the GEF activity of SPATA13 and ARHGEF4. Plays a role in hepatocyte growth factor (HGF)-induced cell migration. Required for MMP9 up-regulation via the JNK signaling pathway in colorectal tumor cells. Acts as a mediator of ERBB2-dependent stabilization of microtubules at the cell cortex. It is required for the localization of MACF1 to the cell membrane and this localization of MACF1 is critical for its function in microtubule stabilization.

**Cellular Location**

Cell junction, adherens junction. Cytoplasm, cytoskeleton. Cell projection, lamellipodium. Cell projection, ruffle membrane. Cytoplasm. Cell membrane.  
Note=Associated with the microtubule network at the growing distal tip of microtubules (PubMed:19632184)  
Accumulates in the lamellipodium and ruffle membrane in response to hepatocyte growth factor (HGF) treatment (PubMed:19151759). The MEMO1-RHOA-DIAPH1 signaling pathway controls localization of the phosphorylated form to the cell membrane (PubMed:20937854)

**Tissue Location**

Expressed in a variety of tissues: brain, small intestine, colon, thymus, skeletal muscle, heart, prostate, lung, spleen, ovary, testis kidney, placenta, blood and liver (PubMed:21643010, PubMed:27217144).  
Isoform 1A: Very strongly expressed in brain but has relatively low expression levels in other tissues (PubMed:19527921, PubMed:21643010, PubMed:27217144).  
Isoform 1B: Predominant form in all tissues except for brain, including gastric mucosa and blood (PubMed:19527921, PubMed:21643010, PubMed:27217144)

Poulogiannis, G., et al. Proc. Natl. Acad. Sci. U.S.A. 107(34):15145-15150(2010)  
Jaulin, F., et al. J. Cell Biol. 190(3):443-460(2010)  
Sugiyama, N., et al. Mol. Cell Proteomics 6(6):1103-1109(2007)

**APC Antibody (Center) - Protocols**

Provided below are standard protocols that you may find useful for product applications.

- [Western Blot](#)
- [Blocking Peptides](#)
- [Dot Blot](#)
- [Immunohistochemistry](#)
- [Immunofluorescence](#)
- [Immunoprecipitation](#)
- [Flow Cytometry](#)
- [Cell Culture](#)