

Mouse CtSL1 Antibody (C-term)
Affinity Purified Rabbit Polyclonal Antibody (Pab)
Catalog # AP19338B

Specification

Mouse CtSL1 Antibody (C-term) - Product Information

Application	WB,E
Primary Accession	P06797
Other Accession	NP_034114.1
Reactivity	Mouse
Host	Rabbit
Clonality	Polyclonal
Isotype	Rabbit Ig
Calculated MW	37547
Antigen Region	267-294

Mouse CtSL1 Antibody (C-term) - Additional Information

Gene ID 13039

Other Names

Cathepsin L1, Cathepsin L, Major excreted protein, MEP, p39 cysteine proteinase, Cathepsin L1 heavy chain, Cathepsin L1 light chain, CtSL, CtSL1

Target/Specificity

This Mouse CtSL1 antibody is generated from rabbits immunized with a KLH conjugated synthetic peptide between 267-294 amino acids from the C-terminal region of mouse CtSL1.

Dilution

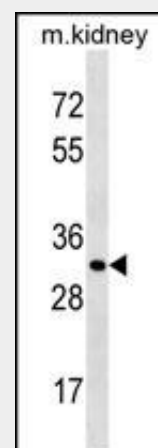
WB~~1:1000

Format

Purified polyclonal antibody supplied in PBS with 0.09% (W/V) sodium azide. This antibody is purified through a protein A column, followed by peptide affinity purification.

Storage

Maintain refrigerated at 2-8°C for up to 2 weeks. For long term storage store at -20°C in small aliquots to prevent freeze-thaw cycles.



Mouse CtSL1 Antibody (C-term)(Cat. #AP19338b) western blot analysis in mouse kidney tissue lysates (35ug/lane). This demonstrates the CtSL1 antibody detected the CtSL1 protein (arrow).

Mouse CtSL1 Antibody (C-term) - Background

Important for the overall degradation of proteins in lysosomes.

Mouse CtSL1 Antibody (C-term) - References

Zeeuwen, P.L., et al. FASEB J. 24(10):3744-3755(2010)
Shimada, N., et al. Am. J. Pathol. 176(5):2571-2580(2010)
Duell, P., et al. Nature 464(7293):1357-1361(2010)
Ceru, S., et al. J. Biol. Chem. 285(13):10078-10086(2010)
Gocheva, V., et al. Genes Dev. 24(3):241-255(2010)

Precautions

Mouse Ctsl1 Antibody (C-term) is for research use only and not for use in diagnostic or therapeutic procedures.

Mouse Ctsl1 Antibody (C-term) - Protein Information

Name Ctsl {ECO:0000312|MGI:MGI:88564}

Synonyms Ctsl1

Function

Thiol protease important for the overall degradation of proteins in lysosomes (Probable). Involved in the solubilization of cross-linked TG/thyroglobulin and in the subsequent release of thyroid hormone thyroxine (T4) by limited proteolysis of TG/thyroglobulin in the thyroid follicle lumen (PubMed:12782676). In neuroendocrine chromaffin cells secretory vesicles, catalyzes the prohormone proenkephalin processing to the active enkephalin peptide neurotransmitter (PubMed:12869695). In thymus, regulates CD4(+) T cell positive selection by generating the major histocompatibility complex class II (MHCII) bound peptide ligands presented by cortical thymic epithelial cells (PubMed:12021314). Also mediates invariant chain processing in cortical thymic epithelial cells (PubMed:9545226). Major elastin-degrading enzyme at neutral pH. Accumulates as a mature and active enzyme in the extracellular space of antigen presenting cells (APCs) to regulate degradation of the extracellular matrix in the course of inflammation (PubMed:12417635). Secreted form generates endostatin from COL18A1 (PubMed:10716919). Critical for cardiac morphology and function (PubMed:11972068).

target="_blank">11972068). Plays an important role in hair follicle morphogenesis and cycling, as well as epidermal differentiation (PubMed:12163394). Required for maximal stimulation of steroidogenesis by TIMP1 (By similarity).

Cellular Location

Lysosome. Apical cell membrane; Peripheral membrane protein; Extracellular side. Secreted, extracellular space. Secreted Cytoplasmic vesicle, secretory vesicle, chromaffin granule {ECO:0000250|UniProtKB:P25975}. Note=Localizes to the apical membrane of thyroid epithelial cells. Released at extracellular space by activated dendritic cells and macrophages (PubMed:12417635)

Tissue Location

Expressed in thymus, kidney and liver (PubMed:9545226). Expressed in thyroid epithelial cells. Expressed in cortical thymic epithelial cells (PubMed:9545226). Expressed by antigen presenting cells (APCs) such as dendritic cells and macrophages (PubMed:11483509, PubMed:12417635).

Mouse Ctsl1 Antibody (C-term) - Protocols

Provided below are standard protocols that you may find useful for product applications.

- [Western Blot](#)
- [Blocking Peptides](#)
- [Dot Blot](#)
- [Immunohistochemistry](#)
- [Immunofluorescence](#)
- [Immunoprecipitation](#)
- [Flow Cytometry](#)
- [Cell Culture](#)