

**Mouse Selenbp1 Antibody (C-term)**  
**Affinity Purified Rabbit Polyclonal Antibody (Pab)**  
**Catalog # AP19344b**

**Specification**

**Mouse Selenbp1 Antibody (C-term) - Product Information**

Application	WB,E
Primary Accession	<a href="#">P17563</a>
Other Accession	<a href="#">Q63836</a> , <a href="#">NP_033176.2</a>
Reactivity	Human
Predicted	Mouse
Host	Rabbit
Clonality	Polyclonal
Isotype	Rabbit Ig
Calculated MW	52514
Antigen Region	318-344

**Mouse Selenbp1 Antibody (C-term) - Additional Information**

**Gene ID** 20341

**Other Names**

Selenium-binding protein 1, 56 kDa  
selenium-binding protein, SBP56, SP56,  
Selenbp1, Lpsb

**Target/Specificity**

This Mouse Selenbp1 antibody is generated from rabbits immunized with a KLH conjugated synthetic peptide between 318-344 amino acids from the C-terminal region of mouse Selenbp1.

**Dilution**

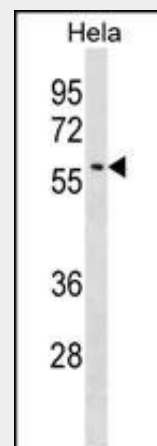
WB~~1:1000

**Format**

Purified polyclonal antibody supplied in PBS with 0.09% (W/V) sodium azide. This antibody is purified through a protein A column, followed by peptide affinity purification.

**Storage**

Maintain refrigerated at 2-8°C for up to 2 weeks. For long term storage store at -20°C in small aliquots to prevent freeze-thaw cycles.



Mouse Selenbp1 Antibody (C-term)(Cat. #AP19344b) western blot analysis in Hela cell line lysates (35ug/lane).This demonstrates the Selenbp1 antibody detected the Selenbp1 protein (arrow).

**Mouse Selenbp1 Antibody (C-term) - Background**

Selenium-binding protein which may be involved in the sensing of reactive xenobiotics in the cytoplasm. May be involved in intra-Golgi protein transport (By similarity).

**Mouse Selenbp1 Antibody (C-term) - References**

- Pohl, N.M., et al. PLoS ONE 4 (11), E7774 (2009) :  
Wu, Y., et al. Am. J. Physiol. Endocrinol. Metab. 295 (1), E205-E215 (2008) :  
Karim, S.A., et al. Genomics 83(2):225-230(2004)  
Jin, W.H., et al. Rapid Commun. Mass Spectrom. 18(18):2169-2176(2004)  
Pajukanta, P., et al. Mamm. Genome 12(3):238-245(2001)

**Precautions**

Mouse Selenbp1 Antibody (C-term) is for research use only and not for use in diagnostic or therapeutic procedures.

**Mouse Selenbp1 Antibody (C-term) - Protein Information**

**Name** Selenbp1

**Synonyms** Lpsb

**Function**

Catalyzes the oxidation of methanethiol, an organosulfur compound known to be produced in substantial amounts by gut bacteria (PubMed:<a href="http://www.uniprot.org/citations/29255262" target="\_blank">29255262</a>).

Selenium-binding protein which may be involved in the sensing of reactive xenobiotics in the cytoplasm. May be involved in intra-Golgi protein transport (By similarity).

**Cellular Location**

Nucleus

{ECO:0000250|UniProtKB:Q13228}.

Cytoplasm, cytosol

{ECO:0000250|UniProtKB:Q13228}.

Membrane

{ECO:0000250|UniProtKB:Q8VIF7};

Peripheral membrane protein

{ECO:0000250|UniProtKB:Q8VIF7}.

Note=May associate with Golgi membrane (By similarity). May associate with the membrane of autophagosomes (By similarity).

{ECO:0000250|UniProtKB:Q8VIF7}

**Tissue Location**

Highly expressed in liver, kidney and, to a lesser extent, lung

**Mouse Selenbp1 Antibody (C-term) - Protocols**

Provided below are standard protocols that you may find useful for product applications.

- [Western Blot](#)
- [Blocking Peptides](#)
- [Dot Blot](#)
- [Immunohistochemistry](#)

- [Immunofluorescence](#)
- [Immunoprecipitation](#)
- [Flow Cytometry](#)
- [Cell Culture](#)