

PPP2R1A Antibody(C-term)
Affinity Purified Rabbit Polyclonal Antibody (Pab)
Catalog # AP19717b

Specification

PPP2R1A Antibody(C-term) - Product Information

Application	WB,E
Primary Accession	P30153
Other Accession	P54612 , Q76MZ3 , Q32PI5 , NP_055040.2
Reactivity	Human
Predicted	Bovine, Mouse, Pig
Host	Rabbit
Clonality	Polyclonal
Isotype	Rabbit Ig
Calculated MW	65309
Antigen Region	454-481

PPP2R1A Antibody(C-term) - Additional Information

Gene ID 5518

Other Names

Serine/threonine-protein phosphatase 2A 65 kDa regulatory subunit A alpha isoform, Medium tumor antigen-associated 61 kDa protein, PP2A subunit A isoform PR65-alpha, PP2A subunit A isoform R1-alpha, PPP2R1A

Target/Specificity

This PPP2R1A antibody is generated from rabbits immunized with a KLH conjugated synthetic peptide between 454-481 amino acids from the C-terminal region of human PPP2R1A.

Dilution

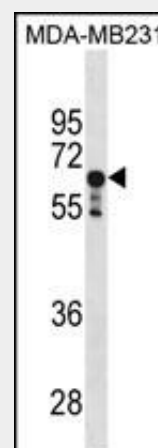
WB~~1:1000

Format

Purified polyclonal antibody supplied in PBS with 0.09% (W/V) sodium azide. This antibody is purified through a protein A column, followed by peptide affinity purification.

Storage

Maintain refrigerated at 2-8°C for up to 2



PPP2R1A Antibody (C-term) (Cat. #AP19717b) western blot analysis in MDA-MB231 cell line lysates (35ug/lane). This demonstrates the PPP2R1A antibody detected the PPP2R1A protein (arrow).

PPP2R1A Antibody(C-term) - Background

This gene encodes a constant regulatory subunit of protein phosphatase 2. Protein phosphatase 2 is one of the four major Ser/Thr phosphatases, and it is implicated in the negative control of cell growth and division. It consists of a common heteromeric core enzyme, which is composed of a catalytic subunit and a constant regulatory subunit, that associates with a variety of regulatory subunits. The constant regulatory subunit A serves as a scaffolding molecule to coordinate the assembly of the catalytic subunit and a variable regulatory B subunit. This gene encodes an alpha isoform of the constant regulatory subunit A. Alternatively spliced transcript variants have been described. [provided by RefSeq].

weeks. For long term storage store at -20°C in small aliquots to prevent freeze-thaw cycles.

Precautions

PPP2R1A Antibody(C-term) is for research use only and not for use in diagnostic or therapeutic procedures.

PPP2R1A Antibody(C-term) - Protein Information

Name PPP2R1A

Function

The PR65 subunit of protein phosphatase 2A serves as a scaffolding molecule to coordinate the assembly of the catalytic subunit and a variable regulatory B subunit. Upon interaction with GNA12 promotes dephosphorylation of microtubule associated protein TAU/MAPT (PubMed:15525651). Required for proper chromosome segregation and for centromeric localization of SGO1 in mitosis (PubMed:16580887).

Cellular Location

Cytoplasm
{ECO:0000250|UniProtKB:Q32PI5}.
Nucleus. Chromosome, centromere. Lateral cell membrane. Cell projection, dendrite.
Note=Centromeric localization requires the presence of BUB1.

PPP2R1A Antibody(C-term) - References

Jones, S., et al. Science
330(6001):228-231(2010)
Schmitz, M.H., et al. Nat. Cell Biol.
12(9):886-893(2010)
Heikkinen, P.T., et al. J. Biol. Chem.
285(6):3740-3749(2010)
Dupont, W.D., et al. Cancer 116(1):8-19(2010)
Wang, Q., et al. Neoplasia
11(10):1012-1021(2009)

PPP2R1A Antibody(C-term) - Protocols

Provided below are standard protocols that you may find useful for product applications.

- [Western Blot](#)
- [Blocking Peptides](#)
- [Dot Blot](#)
- [Immunohistochemistry](#)
- [Immunofluorescence](#)
- [Immunoprecipitation](#)
- [Flow Cytometry](#)
- [Cell Culture](#)