

NR3C1 Antibody (C-term)
Affinity Purified Rabbit Polyclonal Antibody (Pab)
Catalog # AP19840b

Specification

NR3C1 Antibody (C-term) - Product Information

Application	WB,E
Primary Accession	P04150
Other Accession	P59667 , Q9N1U3 , P06537 , NP_000167.1
Reactivity Predicted	Human Mouse, Pig, Rabbit
Host	Rabbit
Clonality	Polyclonal
Isotype	Rabbit Ig
Calculated MW	85659
Antigen Region	560-588

NR3C1 Antibody (C-term) - Additional Information

Gene ID 2908

Other Names

Glucocorticoid receptor, GR, Nuclear receptor subfamily 3 group C member 1, NR3C1, GRL

Target/Specificity

This NR3C1 antibody is generated from rabbits immunized with a KLH conjugated synthetic peptide between 560-588 amino acids from the C-terminal region of human NR3C1.

Dilution

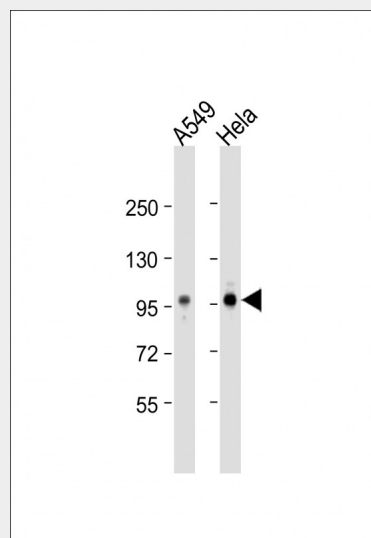
WB~~1:1000

Format

Purified polyclonal antibody supplied in PBS with 0.09% (W/V) sodium azide. This antibody is purified through a protein A column, followed by peptide affinity purification.

Storage

Maintain refrigerated at 2-8°C for up to 2 weeks. For long term storage store at -20°C in small aliquots to prevent freeze-thaw cycles.



All lanes : Anti-NR3C1 Antibody (C-term) at 1:1000 dilution Lane 1: A549 whole cell lysate Lane 2: Hela whole cell lysate Lysates/proteins at 20 µg per lane. Secondary Goat Anti-Rabbit IgG, (H+L), Peroxidase conjugated at 1/10000 dilution. Predicted band size : 86 kDa Blocking/Dilution buffer: 5% NFDM/TBST.

NR3C1 Antibody (C-term) - Background

The protein encoded by this gene is a receptor for glucocorticoids that can act as both a transcription factor and as a regulator of other transcription factors. This protein can also be found in heteromeric cytoplasmic complexes along with heat shock factors and immunophilins. The protein is typically found in the cytoplasm until it binds a ligand, which induces transport into the nucleus. Mutations in this gene are a cause of glucocorticoid resistance, or cortisol, resistance. Alternate splicing, the use of at least three different promoters, and

Precautions

NR3C1 Antibody (C-term) is for research use only and not for use in diagnostic or therapeutic procedures.

NR3C1 Antibody (C-term) - Protein Information

Name NR3C1

Synonyms GRL

Function

Receptor for glucocorticoids (GC) (PubMed:27120390). Has a dual mode of action: as a transcription factor that binds to glucocorticoid response elements (GRE), both for nuclear and mitochondrial DNA, and as a modulator of other transcription factors. Affects inflammatory responses, cellular proliferation and differentiation in target tissues. Involved in chromatin remodeling (PubMed:9590696). Plays a role in rapid mRNA degradation by binding to the 5' UTR of target mRNAs and interacting with PNRC2 in a ligand-dependent manner which recruits the RNA helicase UPF1 and the mRNA- decapping enzyme DCP1A, leading to RNA decay (PubMed:25775514). Could act as a coactivator for STAT5-dependent transcription upon growth hormone (GH) stimulation and could reveal an essential role of hepatic GR in the control of body growth (By similarity).

Cellular Location

[Isoform Alpha]: Cytoplasm. Nucleus. Mitochondrion. Cytoplasm, cytoskeleton, spindle. Cytoplasm, cytoskeleton, microtubule organizing center, centrosome. Note=After ligand activation, translocates from the cytoplasm to the nucleus. In the presence of NR1D1 shows a time-dependent subcellular localization, localizing to the cytoplasm at ZT8 and to the nucleus at ZT20 (By similarity). Lacks this diurnal pattern of localization in the absence of NR1D1, localizing to both nucleus and the cytoplasm at ZT8 and ZT20

alternate translation initiation sites result in several transcript variants encoding the same protein or different isoforms, but the full-length nature of some variants has not been determined.

NR3C1 Antibody (C-term) - References

Seitz, T., et al. J. Mol. Biol. 403(4):562-577(2010)
Wang, W., et al. Nucleic Acids Res. (2010) In press :
Sarzynski, M.A., et al. Int J Obes (Lond) (2010) In press :
Desrivieres, S., et al. Addict Biol (2010) In press :
van Oosten, M.J., et al. Arthritis Res. Ther. 12 (4), R159 (2010) :

(By similarity).

{ECO:0000250|UniProtKB:P06537,
ECO:0000269|PubMed:18838540,
ECO:0000269|PubMed:27120390,
ECO:0000269|PubMed:8621628} [Isoform
Alpha-B]: Nucleus. Cytoplasm Note=After
ligand activation, translocates from the
cytoplasm to the nucleus.

Tissue Location

Widely expressed including bone, stomach,
lung, liver, colon, breast, ovary, pancreas
and kidney (PubMed:25847991). In the
heart, detected in left and right atria, left
and right ventricles, aorta, apex,
intraventricular septum, and
atrioventricular node as well as whole adult
and fetal heart (PubMed:10902803)
[Isoform Alpha-2]: Widely expressed.

NR3C1 Antibody (C-term) - Protocols

Provided below are standard protocols that you
may find useful for product applications.

- [Western Blot](#)
- [Blocking Peptides](#)
- [Dot Blot](#)
- [Immunohistochemistry](#)
- [Immunofluorescence](#)
- [Immunoprecipitation](#)
- [Flow Cytometry](#)
- [Cell Culture](#)