

PPP2CA Antibody (Center)
Affinity Purified Rabbit Polyclonal Antibody (Pab)
Catalog # AP20181c

Specification

PPP2CA Antibody (Center) - Product Information

Application	WB,E
Primary Accession	P67775
Other Accession	P23696 , P63331 , P67777 , P67776 , P63330 , P67774 , NP_002706.1
Reactivity Predicted	Mouse Bovine, Pig, Rabbit, Rat, Drosophila
Host	Rabbit
Clonality	Polyclonal
Isotype	Rabbit Ig
Calculated MW	35594
Antigen Region	88-116

PPP2CA Antibody (Center) - Additional Information

Gene ID 5515

Other Names

Serine/threonine-protein phosphatase 2A catalytic subunit alpha isoform, PP2A-alpha, Replication protein C, RP-C, PPP2CA

Target/Specificity

This PPP2CA antibody is generated from rabbits immunized with a KLH conjugated synthetic peptide between 88-116 amino acids from the Central region of human PPP2CA.

Dilution

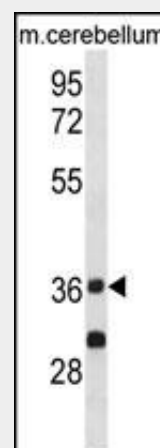
WB~~1:1000

Format

Purified polyclonal antibody supplied in PBS with 0.09% (W/V) sodium azide. This antibody is purified through a protein A column, followed by peptide affinity purification.

Storage

Maintain refrigerated at 2-8°C for up to 2



PPP2CA Antibody (Center) (Cat. #AP20181c) western blot analysis in mouse cerebellum tissue lysates (35ug/lane). This demonstrates the PPP2CA antibody detected the PPP2CA protein (arrow).

PPP2CA Antibody (Center) - Background

This gene encodes the phosphatase 2A catalytic subunit. Protein phosphatase 2A is one of the four major Ser/Thr phosphatases, and it is implicated in the negative control of cell growth and division. It consists of a common heteromeric core enzyme, which is composed of a catalytic subunit and a constant regulatory subunit, that associates with a variety of regulatory subunits. This gene encodes an alpha isoform of the catalytic subunit.

PPP2CA Antibody (Center) - References

Shimada, M., et al. Hum. Genet. 128(4):433-441(2010)
Jayadeva, G., et al. J. Biol. Chem. 285(39):29863-29873(2010)
Pradhan, S., et al. J. Biol. Chem.

weeks. For long term storage store at -20°C in small aliquots to prevent freeze-thaw cycles.

Precautions

PPP2CA Antibody (Center) is for research use only and not for use in diagnostic or therapeutic procedures.

285(38):29059-29068(2010)
Schmitz, M.H., et al. Nat. Cell Biol.
12(9):886-893(2010)
Antony, R., et al. J. Biol. Chem.
285(24):18301-18308(2010)

PPP2CA Antibody (Center) - Protein Information

Name PPP2CA

Function

PP2A is the major phosphatase for microtubule-associated proteins (MAPs). PP2A can modulate the activity of phosphorylase B kinase casein kinase 2, mitogen-stimulated S6 kinase, and MAP-2 kinase. Cooperates with SGO2 to protect centromeric cohesin from separase-mediated cleavage in oocytes specifically during meiosis I (By similarity). Can dephosphorylate SV40 large T antigen and p53/TP53. Activates RAF1 by dephosphorylating it at 'Ser-259' (PubMed:10801873). Mediates dephosphorylation of WEE1, preventing its ubiquitin-mediated proteolysis, increasing WEE1 protein levels, and promoting the G2/M checkpoint (PubMed:33108758).

Cellular Location

Cytoplasm. Nucleus. Chromosome, centromere. Cytoplasm, cytoskeleton, spindle pole. Note=In prometaphase cells, but not in anaphase cells, localizes at centromeres. During mitosis, also found at spindle poles. Centromeric localization requires the presence of SGO2 (By similarity).

PPP2CA Antibody (Center) - Protocols

Provided below are standard protocols that you may find useful for product applications.

- [Western Blot](#)
- [Blocking Peptides](#)
- [Dot Blot](#)

- [Immunohistochemistry](#)
- [Immunofluorescence](#)
- [Immunoprecipitation](#)
- [Flow Cytometry](#)
- [Cell Culture](#)