

**TAF7L Antibody (N-term)**  
**Affinity Purified Rabbit Polyclonal Antibody (Pab)**  
**Catalog # AP20359a**

**Specification**

**TAF7L Antibody (N-term) - Product Information**

Application	WB,E
Primary Accession	<a href="#">Q5H9L4</a>
Reactivity	Human
Host	Rabbit
Clonality	Polyclonal
Isotype	Rabbit Ig
Calculated MW	52588
Antigen Region	68-96

**TAF7L Antibody (N-term) - Additional Information**

**Gene ID** 54457

**Other Names**

Transcription initiation factor TFIID subunit 7-like, Cancer/testis antigen 40, CT40, RNA polymerase II TBP-associated factor subunit Q, TATA box-binding protein-associated factor 50 kDa, Transcription initiation factor TFIID 50 kDa subunit, TAF7L, TAF2Q

**Target/Specificity**

This TAF7L antibody is generated from rabbits immunized with a KLH conjugated synthetic peptide between 68-96 amino acids from the N-terminal region of human TAF7L.

**Dilution**

WB~1:1000

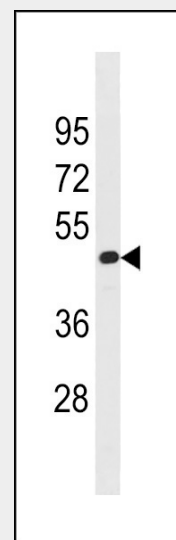
**Format**

Purified polyclonal antibody supplied in PBS with 0.09% (W/V) sodium azide. This antibody is purified through a protein A column, followed by peptide affinity purification.

**Storage**

Maintain refrigerated at 2-8°C for up to 2 weeks. For long term storage store at -20°C in small aliquots to prevent freeze-thaw cycles.

**Precautions**



TAF7L Antibody (N-term) (Cat. #AP20359a) western blot analysis in HepG2 cell line lysates (35ug/lane). This demonstrates the TAF7L antibody detected the TAF7L protein (arrow).

**TAF7L Antibody (N-term) - Background**

Probably functions as a spermatogenesis-specific component of the DNA-binding general transcription factor complex TFIID, a multimeric protein complex that plays a central role in mediating promoter responses to various activators and repressors. May play a role in spermatogenesis (By similarity).

TAF7L Antibody (N-term) is for research use only and not for use in diagnostic or therapeutic procedures.

#### **TAF7L Antibody (N-term) - Protein Information**

**Name** TAF7L

**Synonyms** TAF2Q

#### **Function**

Probably functions as a spermatogenesis-specific component of the DNA-binding general transcription factor complex TFIID, a multimeric protein complex that plays a central role in mediating promoter responses to various activators and repressors. May play a role in spermatogenesis (By similarity).

#### **Cellular Location**

Nucleus. Cytoplasm. Note=Cytoplasmic in spermatogonia and early spermatocytes (preleptotene, leptotene, and zygotene); translocates into the nuclei of pachytene spermatocytes and round spermatids.

#### **Tissue Location**

Testis-specific..

#### **TAF7L Antibody (N-term) - Protocols**

Provided below are standard protocols that you may find useful for product applications.

- [Western Blot](#)
- [Blocking Peptides](#)
- [Dot Blot](#)
- [Immunohistochemistry](#)
- [Immunofluorescence](#)
- [Immunoprecipitation](#)
- [Flow Cytometry](#)
- [Cell Culture](#)