

**C1GALT1 Antibody (Center)**  
**Affinity Purified Rabbit Polyclonal Antibody (Pab)**  
**Catalog # AP20432c**

**Specification**

**C1GALT1 Antibody (Center) - Product Information**

Application	<b>WB, IHC-P,E</b>
Primary Accession	<a href="#">Q9NS00</a>
Reactivity	<b>Human, Mouse</b>
Host	<b>Rabbit</b>
Clonality	<b>Polyclonal</b>
Isotype	<b>Rabbit IgG</b>
Antigen Region	<b>115-144</b>

**C1GALT1 Antibody (Center) - Additional Information**

**Gene ID** 56913

**Other Names**

Glycoprotein-N-acetylgalactosamine 3-beta-galactosyltransferase 1, B3Gal-T8, Core 1 O-glycan T-synthase, Core 1 UDP-galactose:N-acetylgalactosamine-alpha-R beta 1, 3-galactosyltransferase 1, Beta-1, 3-galactosyltransferase, Core 1 beta1, 3-galactosyltransferase 1, C1GalT1, Core 1 beta3-Gal-T1, C1GALT1

**Target/Specificity**

This C1GALT1 antibody is generated from rabbits immunized with a KLH conjugated synthetic peptide between 115-144 amino acids from the Central region of human C1GALT1.

**Dilution**

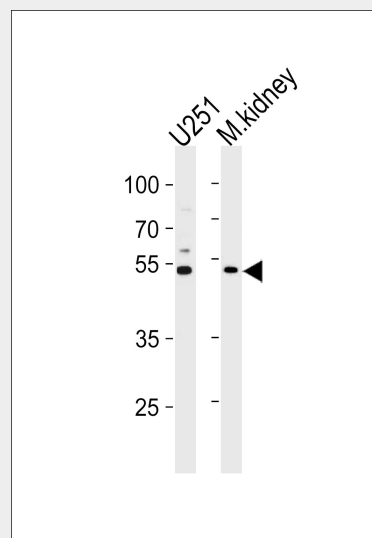
WB~~1:1000  
IHC-P~~1:100

**Format**

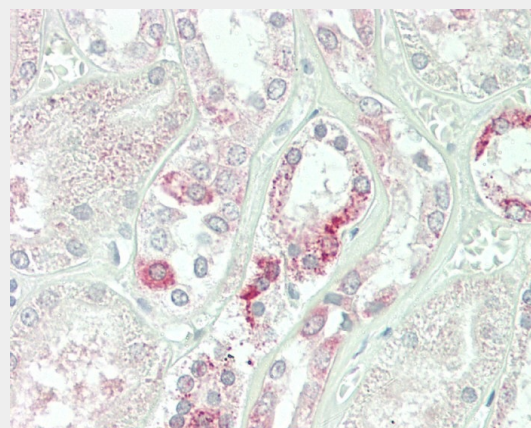
Purified polyclonal antibody supplied in PBS with 0.09% (W/V) sodium azide. This antibody is purified through a protein A column, followed by peptide affinity purification.

**Storage**

Maintain refrigerated at 2-8°C for up to 2 weeks. For long term storage store at -20°C in small aliquots to prevent freeze-thaw



C1GALT1 Antibody (Center) (Cat. #AP20432c) western blot analysis in U251 cell line and mouse kidney lysates (35ug/lane). This demonstrates the C1GALT1 antibody detected the C1GALT1 protein (arrow).



Formalin-fixed and paraffin-embedded H.kidney tissue reacted with C1GALT1 Antibody (Center) (Cat#AP20432c).

**C1GALT1 Antibody (Center) - Background**

Glycosyltransferase that generates the core 1 O-glycan Gal-beta1-3GalNAc-alpha1-Ser/Thr (T

cycles.

#### **Precautions**

C1GALT1 Antibody (Center) is for research use only and not for use in diagnostic or therapeutic procedures.

#### **C1GALT1 Antibody (Center) - Protein Information**

**Name** C1GALT1

#### **Function**

Glycosyltransferase that generates the core 1 O-glycan Gal-beta1-3GalNAc-alpha1-Ser/Thr (T antigen), which is a precursor for many extended O-glycans in glycoproteins. Plays a central role in many processes, such as angiogenesis, thrombopoiesis and kidney homeostasis development.

#### **Cellular Location**

Membrane; Single-pass type II membrane protein

#### **Tissue Location**

Widely expressed. Highly expressed in kidney, heart, placenta and liver.

antigen), which is a precursor for many extended O-glycans in glycoproteins. Plays a central role in many processes, such as angiogenesis, thrombopoiesis and kidney homeostasis development.

#### **C1GALT1 Antibody (Center) - References**

Ju T., et al. J. Biol. Chem. 277:178-186(2002).  
Jensen M.P.A., et al. Submitted (JUN-1999) to the EMBL/GenBank/DDBJ databases.  
Hillier L.W., et al. Nature 424:157-164(2003).  
Scherer S.W., et al. Science 300:767-772(2003).  
Ju T., et al. Proc. Natl. Acad. Sci. U.S.A. 99:16613-16618(2002).

#### **C1GALT1 Antibody (Center) - Protocols**

Provided below are standard protocols that you may find useful for product applications.

- [Western Blot](#)
- [Blocking Peptides](#)
- [Dot Blot](#)
- [Immunohistochemistry](#)
- [Immunofluorescence](#)
- [Immunoprecipitation](#)
- [Flow Cytometry](#)
- [Cell Culture](#)