

ESD Antibody (Center)
Purified Rabbit Polyclonal Antibody (Pab)
Catalog # AP20553c

Specification

ESD Antibody (Center) - Product Information

Application	WB,E
Primary Accession	P10768
Other Accession	Q9GJT2
Reactivity	Human, Mouse, Rat
Predicted Host	Pig
Clonality	Rabbit Polyclonal
Isotype	Rabbit Ig
Calculated MW	31463

ESD Antibody (Center) - Additional Information

Gene ID 2098

Other Names

S-formylglutathione hydrolase, FGH, Esterase D, Methylumbelliferyl-acetate deacetylase, ESD

Target/Specificity

This ESD antibody is generated from a rabbit immunized with a KLH conjugated synthetic peptide between 68-102 amino acids from the Central region of human ESD.

Dilution

WB~~1:1000

Format

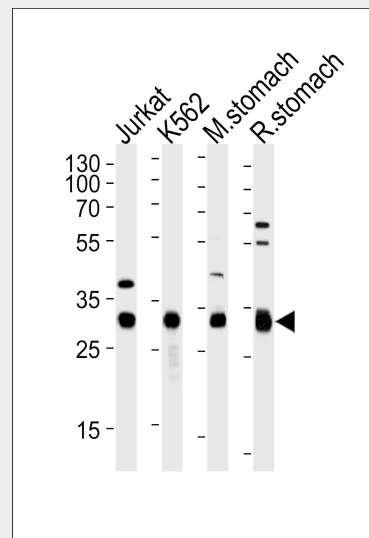
Purified polyclonal antibody supplied in PBS with 0.09% (W/V) sodium azide. This antibody is purified through a protein A column, followed by peptide affinity purification.

Storage

Maintain refrigerated at 2-8°C for up to 2 weeks. For long term storage store at -20°C in small aliquots to prevent freeze-thaw cycles.

Precautions

ESD Antibody (Center) is for research use



Western blot analysis of lysates from Jurkat, K562 cell line, mouse stomach and rat stomach tissue (from left to right), using ESD Antibody (Center) (Cat. #AP20553c). AP20553c was diluted at 1:1000 at each lane. A goat anti-rabbit(HRP) at 1:5000 dilution was used as the secondary antibody. Lysates at 35ug per lane.

ESD Antibody (Center) - Background

Serine hydrolase involved in the detoxification of formaldehyde.

ESD Antibody (Center) - References

- Lee E.Y.-H.P.,et al.Proc. Natl. Acad. Sci. U.S.A. 83:6337-6341(1986).
- Young L.-J.S.,et al.Hum. Genet. 79:137-141(1988).
- Hu R.-M.,et al.Proc. Natl. Acad. Sci. U.S.A. 97:9543-9548(2000).
- Kalnine N.,et al.Submitted (MAY-2003) to the EMBL/GenBank/DDBJ databases.
- Dunham A.,et al.Nature 428:522-528(2004).

only and not for use in diagnostic or therapeutic procedures.

ESD Antibody (Center) - Protein Information

Name ESD

Function

Serine hydrolase involved in the detoxification of formaldehyde.

Cellular Location

Cytoplasm. Cytoplasmic vesicle.

ESD Antibody (Center) - Protocols

Provided below are standard protocols that you may find useful for product applications.

- [Western Blot](#)
- [Blocking Peptides](#)
- [Dot Blot](#)
- [Immunohistochemistry](#)
- [Immunofluorescence](#)
- [Immunoprecipitation](#)
- [Flow Cytometry](#)
- [Cell Culture](#)