

PRDM13 Antibody (N-term)
Purified Rabbit Polyclonal Antibody (Pab)
Catalog # AP20805a

Specification

PRDM13 Antibody (N-term) - Product Information

Application	WB, IHC-P,E
Primary Accession	O9H4O3
Reactivity	Human
Host	Rabbit
Clonality	Polyclonal
Isotype	Rabbit IgG

PRDM13 Antibody (N-term) - Additional Information

Gene ID 59336

Other Names

PR domain zinc finger protein 13, 211-, PR domain-containing protein 13, PRDM13, PFM10

Target/Specificity

This PRDM13 antibody is generated from a rabbit immunized with a KLH conjugated synthetic peptide between 2-36 amino acids from the N-terminal region of human PRDM13.

Dilution

WB~~1:1000
IHC-P~~1:100

Format

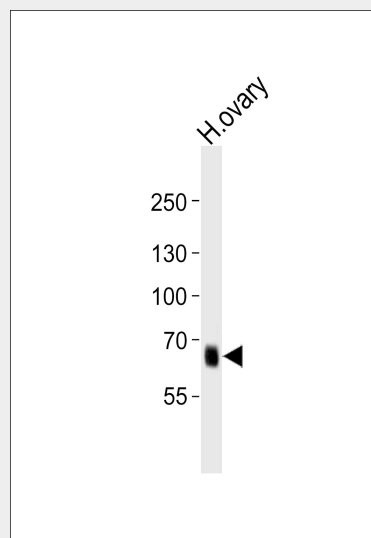
Purified polyclonal antibody supplied in PBS with 0.09% (W/V) sodium azide. This antibody is purified through a protein A column, followed by peptide affinity purification.

Storage

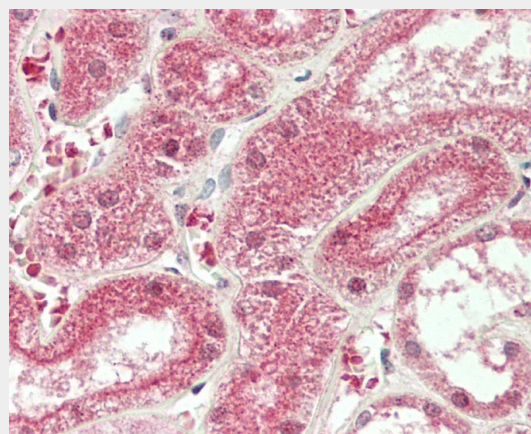
Maintain refrigerated at 2-8°C for up to 2 weeks. For long term storage store at -20°C in small aliquots to prevent freeze-thaw cycles.

Precautions

PRDM13 Antibody (N-term) is for research use only and not for use in diagnostic or therapeutic procedures.



Western blot analysis of lysate from human ovary tissue lysate, using PRDM13 Antibody (N-term)(Cat. #AP20805a). AP20805a was diluted at 1:1000. A goat anti-rabbit IgG H&L(HRP) at 1:10000 dilution was used as the secondary antibody. Lysate at 35ug.



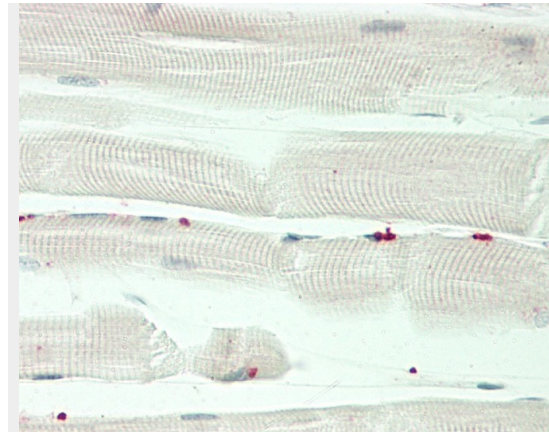
Formalin-fixed and paraffin-embedded H.kidney tissue reacted with PRDM13 Antibody (N-term) (Cat#AP20805a).

PRDM13 Antibody (N-term) - Protein Information**Name** PRDM13**Synonyms** PFM10**Function**

May be involved in transcriptional regulation.

Cellular Location

Nucleus.



Formalin-fixed and paraffin-embedded H.skeletal muscle tissue reacted with PRDM13 Antibody (N-term) (Cat#AP20805a).

PRDM13 Antibody (N-term) - Protocols

Provided below are standard protocols that you may find useful for product applications.

- [Western Blot](#)
- [Blocking Peptides](#)
- [Dot Blot](#)
- [Immunohistochemistry](#)
- [Immunofluorescence](#)
- [Immunoprecipitation](#)
- [Flow Cytometry](#)
- [Cell Culture](#)

PRDM13 Antibody (N-term) - Background

May be involved in transcriptional regulation.

PRDM13 Antibody (N-term) - References

Yang X.-H., et al. Submitted (JUL-2000) to the EMBL/GenBank/DDBJ databases.
Mungall A.J., et al. Nature 425:805-811(2003).
Mural R.J., et al. Submitted (SEP-2005) to the EMBL/GenBank/DDBJ databases.