

**SERPINE1 Antibody (C-term)**  
**Purified Rabbit Polyclonal Antibody (Pab)**  
Catalog # AP20852c

### Specification

#### SERPINE1 Antibody (C-term) - Product Information

Application	WB,E
Primary Accession	<a href="#">P05121</a>
Reactivity	Human
Host	Rabbit
Clonality	Polyclonal
Isotype	Rabbit Ig
Calculated MW	45060

#### SERPINE1 Antibody (C-term) - Additional Information

Gene ID 5054

#### Other Names

Plasminogen activator inhibitor 1, PAI, PAI-1, Endothelial plasminogen activator inhibitor, Serpin E1, SERPINE1, PAI1, PLANH1

#### Target/Specificity

This SERPINE1 antibody is generated from a rabbit immunized with a KLH conjugated synthetic peptide between 323-357 amino acids from the C-terminal region of human SERPINE1.

#### Dilution

WB~~1:1000

#### Format

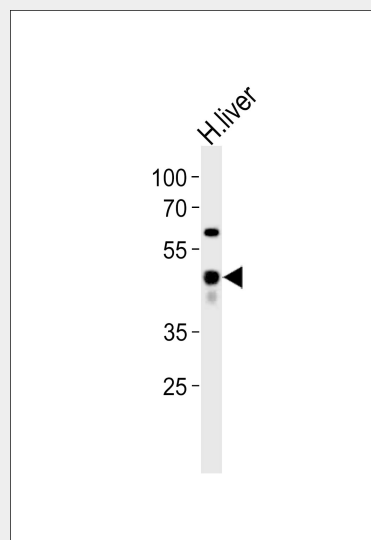
Purified polyclonal antibody supplied in PBS with 0.09% (W/V) sodium azide. This antibody is purified through a protein A column, followed by peptide affinity purification.

#### Storage

Maintain refrigerated at 2-8°C for up to 2 weeks. For long term storage store at -20°C in small aliquots to prevent freeze-thaw cycles.

#### Precautions

SERPINE1 Antibody (C-term) is for research



Western blot analysis of lysate from human liver tissue, using SERPINE1 Antibody (C-term)(Cat. #AP20852c). AP20852c was diluted at 1:1000. A goat anti-rabbit IgG H&L(HRP) at 1:10000 dilution was used as the secondary antibody. Lysate at 20ug.

#### SERPINE1 Antibody (C-term) - Background

Serine protease inhibitor. This inhibitor acts as 'bait' for tissue plasminogen activator, urokinase, protein C and matriptase-3/TMPRSS7. Its rapid interaction with PLAT may function as a major control point in the regulation of fibrinolysis.

#### SERPINE1 Antibody (C-term) - References

- Pannekoek H.,et al.EMBO J. 5:2539-2544(1986).
- Loskutoff D.J.,et al.Biochemistry 26:3763-3768(1987).
- Ginsburg D.,et al.J. Clin. Invest. 78:1673-1680(1986).
- Follo M.,et al.Gene 84:447-453(1989).
- Strandberg L.,et al.Eur. J. Biochem. 176:609-616(1988).

use only and not for use in diagnostic or therapeutic procedures.

### **SERPINE1 Antibody (C-term) - Protein Information**

**Name** SERPINE1

**Synonyms** PAI1, PLANH1

### **Function**

Serine protease inhibitor. Inhibits TMPRSS7 (PubMed:<a href="http://www.uniprot.org/citations/15853774" target="\_blank">15853774</a>). Is a primary inhibitor of tissue-type plasminogen activator (PLAT) and urokinase-type plasminogen activator (PLAU). As PLAT inhibitor, it is required for fibrinolysis down-regulation and is responsible for the controlled degradation of blood clots (PubMed:<a href="http://www.uniprot.org/citations/8481516" target="\_blank">8481516</a>, PubMed:<a href="http://www.uniprot.org/citations/9207454" target="\_blank">9207454</a>, PubMed:<a href="http://www.uniprot.org/citations/17912461" target="\_blank">17912461</a>). As PLAU inhibitor, it is involved in the regulation of cell adhesion and spreading (PubMed:<a href="http://www.uniprot.org/citations/9175705" target="\_blank">9175705</a>). Acts as a regulator of cell migration, independently of its role as protease inhibitor (PubMed:<a href="http://www.uniprot.org/citations/15001579" target="\_blank">15001579</a>, PubMed:<a href="http://www.uniprot.org/citations/9168821" target="\_blank">9168821</a>). It is required for stimulation of keratinocyte migration during cutaneous injury repair (PubMed:<a href="http://www.uniprot.org/citations/18386027" target="\_blank">18386027</a>). It is involved in cellular and replicative senescence (PubMed:<a href="http://www.uniprot.org/citations/16862142" target="\_blank">16862142</a>). Plays a role in alveolar type 2 cells senescence in the lung (By similarity). Is involved in the regulation of cementogenic differentiation of periodontal ligament stem cells, and regulates odontoblast differentiation and

dentin formation during odontogenesis  
(PubMed:<a href="http://www.uniprot.org/citations/25808697" target="\_blank">25808697</a>,  
PubMed:<a href="http://www.uniprot.org/citations/27046084" target="\_blank">27046084</a>).

**Cellular Location**

Secreted.

**Tissue Location**

Expressed in endothelial cells  
(PubMed:2430793, PubMed:3097076).  
Found in plasma, platelets, and hepatoma  
and fibrosarcoma cells.

**SERPINE1 Antibody (C-term) - Protocols**

Provided below are standard protocols that you  
may find useful for product applications.

- [Western Blot](#)
- [Blocking Peptides](#)
- [Dot Blot](#)
- [Immunohistochemistry](#)
- [Immunofluorescence](#)
- [Immunoprecipitation](#)
- [Flow Cytometry](#)
- [Cell Culture](#)