

**NOVA1 Antibody (Center)**  
**Purified Rabbit Polyclonal Antibody (Pab)**  
**Catalog # AP20963a**

**Specification**

**NOVA1 Antibody (Center) - Product Information**

Application	<b>WB, IHC-P,E</b>
Primary Accession	<a href="#">P51513</a>
Other Accession	<a href="#">Q9JKN6</a>
Reactivity	<b>Human</b>
Predicted	<b>Mouse</b>
Host	<b>Rabbit</b>
Clonality	<b>Polyclonal</b>
Isotype	<b>Rabbit Ig</b>
Calculated MW	<b>51727</b>

**NOVA1 Antibody (Center) - Additional Information**

**Gene ID 4857**

**Other Names**

RNA-binding protein Nova-1,  
Neuro-oncological ventral antigen 1,  
Onconeural ventral antigen 1,  
Paraneoplastic Ri antigen, Ventral  
neuron-specific protein 1, NOVA1

**Target/Specificity**

This NOVA1 antibody is generated from a rabbit immunized with a KLH conjugated synthetic peptide between 139-173 amino acids from the Central region of human NOVA1.

**Dilution**

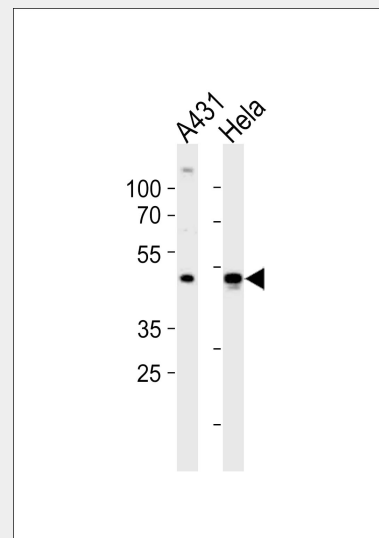
WB~~1:1000  
IHC-P~~1:25

**Format**

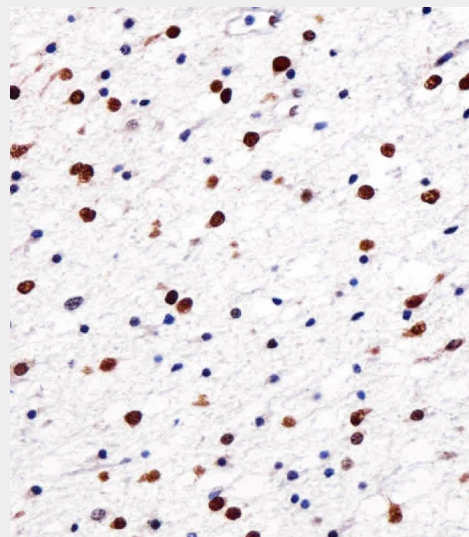
Purified polyclonal antibody supplied in PBS with 0.09% (W/V) sodium azide. This antibody is purified through a protein A column, followed by peptide affinity purification.

**Storage**

Maintain refrigerated at 2-8°C for up to 2 weeks. For long term storage store at -20°C in small aliquots to prevent freeze-thaw cycles.



Western blot analysis of lysates from A431, HeLa cell line (from left to right), using NOVA1 Antibody (Center)(Cat. #AP20963a). AP20963a was diluted at 1:1000 at each lane. A goat anti-rabbit IgG H&L(HRP) at 1:10000 dilution was used as the secondary antibody. Lysates at 20ug per lane.



Immunohistochemical analysis of paraffin-embedded H. astrogloma section using NOVA1 Antibody (Center)(Cat#AP20963a). AP20963a was

**Precautions**

NOVA1 Antibody (Center) is for research use only and not for use in diagnostic or therapeutic procedures.

diluted at 1:25 dilution. A undiluted biotinylated goat polyvalent antibody was used as the secondary, followed by DAB staining.

**NOVA1 Antibody (Center) - Protein Information**

**Name** NOVA1

**Function**

May regulate RNA splicing or metabolism in a specific subset of developing neurons.

**Cellular Location**

Nucleus.

**Tissue Location**

Brain.

**NOVA1 Antibody (Center) - Background**

May regulate RNA splicing or metabolism in a specific subset of developing neurons.

**NOVA1 Antibody (Center) - References**

Buckanovich R.J., et al. *Neuron* 11:657-672(1993).  
Ota T., et al. *Nat. Genet.* 36:40-45(2004).  
Venter J.C., et al. *Science* 291:1304-1351(2001).  
Mural R.J., et al. Submitted (SEP-2005) to the EMBL/GenBank/DDBJ databases.  
Dmitrenko V.V., et al. Submitted (APR-1996) to the EMBL/GenBank/DDBJ databases.

**NOVA1 Antibody (Center) - Protocols**

Provided below are standard protocols that you may find useful for product applications.

- [Western Blot](#)
- [Blocking Peptides](#)
- [Dot Blot](#)
- [Immunohistochemistry](#)
- [Immunofluorescence](#)
- [Immunoprecipitation](#)
- [Flow Cytometry](#)
- [Cell Culture](#)