

MSI1 Antibody (Center)
Purified Rabbit Polyclonal Antibody (Pab)
Catalog # AP21004a

Specification

MSI1 Antibody (Center) - Product Information

Application	WB,E
Primary Accession	Q43347
Other Accession	Q920Q6 , Q96DH6 , Q8K3P4 , Q61474
Reactivity	Human
Predicted	Mouse, Rat
Host	Rabbit
Clonality	Polyclonal
Isotype	Rabbit Ig
Calculated MW	39125

MSI1 Antibody (Center) - Additional Information

Gene ID 4440

Other Names

RNA-binding protein Musashi homolog 1,
Musashi-1, MSI1

Target/Specificity

This MSI1 antibody is generated from a rabbit immunized with a KLH conjugated synthetic peptide between 144-176 amino acids from the Central region of human MSI1.

Dilution

WB~~1:1000

Format

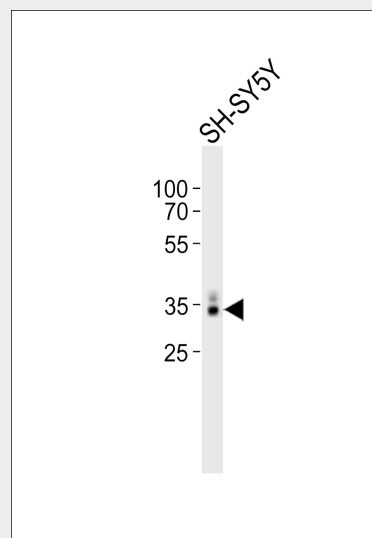
Purified polyclonal antibody supplied in PBS with 0.09% (W/V) sodium azide. This antibody is purified through a protein A column, followed by peptide affinity purification.

Storage

Maintain refrigerated at 2-8°C for up to 2 weeks. For long term storage store at -20°C in small aliquots to prevent freeze-thaw cycles.

Precautions

MSI1 Antibody (Center) is for research use only and not for use in diagnostic or



Western blot analysis of lysate from SH-SY5Y cell line, using MSI1 Antibody (Center)(Cat. #AP21004a). AP21004a was diluted at 1:1000. A goat anti-rabbit IgG H&L(HRP) at 1:10000 dilution was used as the secondary antibody. Lysate at 20ug.

MSI1 Antibody (Center) - Background

RNA binding protein that regulates the expression of target mRNAs at the translation level. Regulates expression of the NOTCH1 antagonist NUMB. Binds RNA containing the sequence 5'- GUUAGUUAGUUAGUU-3' and other sequences containing the pattern 5'- [GA]U(1-3)AGU-3'. May play a role in the proliferation and maintenance of stem cells in the central nervous system (By similarity).

MSI1 Antibody (Center) - References

Good P.,et al.Genomics 52:382-384(1998).
Scherer S.E.,et al.Nature 440:346-351(2006).
Shu H.-J.,et al.Biochem. Biophys. Res. Commun. 293:150-154(2002).
Okano H.,et al.J. Cell Sci. 115:1355-1359(2002).
Gauci S.,et al.Anal. Chem.

therapeutic procedures.

81:4493-4501(2009).

MSI1 Antibody (Center) - Protein Information

Name MSI1

Function

RNA binding protein that regulates the expression of target mRNAs at the translation level. Regulates expression of the NOTCH1 antagonist NUMB. Binds RNA containing the sequence 5'-GUUAGUUAGUUAGUU- 3' and other sequences containing the pattern 5'-[GA]U(1-3)AGU-3'. May play a role in the proliferation and maintenance of stem cells in the central nervous system (By similarity).

Cellular Location

Cytoplasm

{ECO:0000250|UniProtKB:Q61474}.

Nucleus {ECO:0000250|UniProtKB:Q61474}

Tissue Location

Detected in fetal kidney, brain, liver and lung, and in adult brain and pancreas.

Detected in hepatoma cell lines

MSI1 Antibody (Center) - Protocols

Provided below are standard protocols that you may find useful for product applications.

- [Western Blot](#)
- [Blocking Peptides](#)
- [Dot Blot](#)
- [Immunohistochemistry](#)
- [Immunofluorescence](#)
- [Immunoprecipitation](#)
- [Flow Cytometry](#)
- [Cell Culture](#)