

**NPY5R Antibody (Center)**  
**Purified Rabbit Polyclonal Antibody (Pab)**  
Catalog # AP21217c

**Specification**

**NPY5R Antibody (Center) - Product Information**

Application	<b>WB,E</b>
Primary Accession	<a href="#">Q15761</a>
Reactivity	<b>Human</b>
Host	<b>Rabbit</b>
Clonality	<b>polyclonal</b>
Isotype	<b>Rabbit Ig</b>
Calculated MW	<b>50727</b>

**NPY5R Antibody (Center) - Additional Information**

**Gene ID** 4889

**Other Names**

Neuropeptide Y receptor type 5, NPY5-R,  
NPY-Y5 receptor, NPY5-R, Y5 receptor,  
NPY5R, NPYR5

**Target/Specificity**

This NPY5R antibody is generated from a rabbit immunized with a KLH conjugated synthetic peptide between 305-341 amino acids from the Central region of human NPY5R.

**Dilution**

WB~~1:2000

**Format**

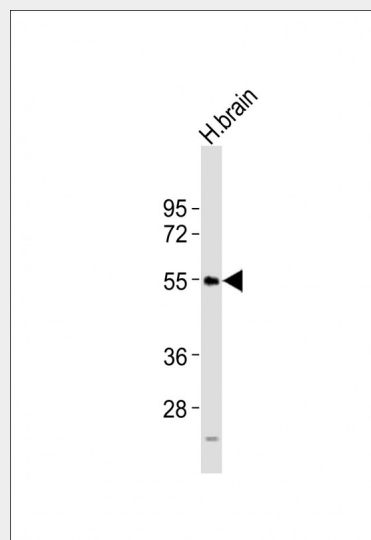
Purified polyclonal antibody supplied in PBS with 0.09% (W/V) sodium azide. This antibody is purified through a protein A column, followed by peptide affinity purification.

**Storage**

Maintain refrigerated at 2-8°C for up to 2 weeks. For long term storage store at -20°C in small aliquots to prevent freeze-thaw cycles.

**Precautions**

NPY5R Antibody (Center) is for research use only and not for use in diagnostic or therapeutic procedures.



Anti-NPY5R Antibody (Center) at 1:2000 dilution + H. brain tissue lysates  
Lysates/proteins at 20 µg per lane.  
Secondary Goat Anti-Rabbit IgG, (H+L), Peroxidase conjugated at 1/10000 dilution  
Predicted band size : 51 kDa  
Blocking/Dilution buffer: 5% NFDM/TBST.

**NPY5R Antibody (Center) - Background**

Receptor for neuropeptide Y and peptide YY. The activity of this receptor is mediated by G proteins that inhibit adenylate cyclase activity. Seems to be associated with food intake. Could be involved in feeding disorders.

**NPY5R Antibody (Center) - References**

- Hu Y.,et al.J. Biol. Chem. 271:26315-26319(1996).
- Gerald C.,et al.Nature 382:168-171(1996).
- Herzog H.,et al.Genomics 41:315-319(1997).
- Kopatz S.A.,et al.Submitted (JUN-2003) to the EMBL/GenBank/DDBJ databases.
- Hillier L.W.,et al.Nature 434:724-731(2005).

**NPY5R Antibody (Center) - Protein Information**

**Name** NPY5R

**Synonyms** NPYR5

**Function**

Receptor for neuropeptide Y and peptide YY. The activity of this receptor is mediated by G proteins that inhibit adenylate cyclase activity. Seems to be associated with food intake. Could be involved in feeding disorders.

**Cellular Location**

Cell membrane; Multi-pass membrane protein.

**Tissue Location**

Brain; hypothalamus.

**NPY5R Antibody (Center) - Protocols**

Provided below are standard protocols that you may find useful for product applications.

- [Western Blot](#)
- [Blocking Peptides](#)
- [Dot Blot](#)
- [Immunohistochemistry](#)
- [Immunofluorescence](#)
- [Immunoprecipitation](#)
- [Flow Cytometry](#)
- [Cell Culture](#)