

**UCHL1 Antibody (N-term)**  
**Purified Rabbit Polyclonal Antibody (Pab)**  
**Catalog # AP2126a**

**Specification**

**UCHL1 Antibody (N-term) - Product Information**

Application	IF, WB, IHC-P, FC, E
Primary Accession	<a href="#">P09936</a>
Other Accession	<a href="#">Q6SEG5</a> , <a href="#">P23356</a>
Reactivity	Human, Mouse
Predicted	Bovine, Pig
Host	Rabbit
Clonality	Polyclonal
Isotype	Rabbit Ig
Calculated MW	24824
Antigen Region	16-46

**UCHL1 Antibody (N-term) - Additional Information**

**Gene ID** 7345

**Other Names**

Ubiquitin carboxyl-terminal hydrolase isozyme L1, UCH-L1, 6---, Neuron cytoplasmic protein 95, PGP 95, PGP95, Ubiquitin thioesterase L1, UCHL1

**Target/Specificity**

This UCHL1 antibody is generated from rabbits immunized with a KLH conjugated synthetic peptide between 16-46 amino acids from the N-terminal region of human UCHL1.

**Dilution**

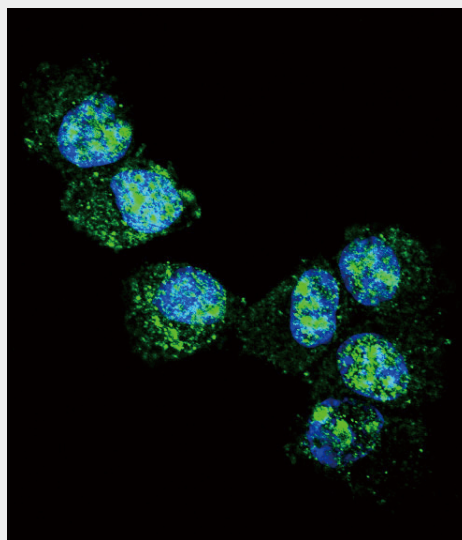
IF~~1:10~50  
WB~~1:1000  
IHC-P~~1:10~50  
FC~~1:10~50

**Format**

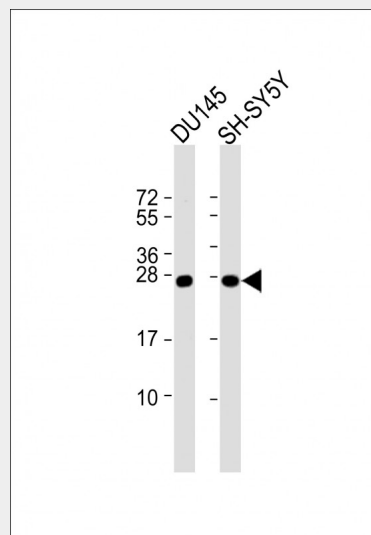
Purified polyclonal antibody supplied in PBS with 0.09% (W/V) sodium azide. This antibody is prepared by Saturated Ammonium Sulfate (SAS) precipitation followed by dialysis against PBS.

**Storage**

Maintain refrigerated at 2-8°C for up to 2 weeks. For long term storage store at -20°C



Confocal immunofluorescent analysis of UCHL1 Antibody (N-term)(Cat#AP2126a) with NCI-H460 cell followed by Alexa Fluor 488-conjugated goat anti-rabbit IgG (green). DAPI was used to stain the cell nuclear (blue).



All lanes : Anti-UCHL1 Antibody (V31) at 1:1000 dilution Lane 1: DU145 whole cell lysate Lane 2: SH-SY5Y whole cell lysate Lysates/proteins at 20 µg per lane. Secondary Goat Anti-Rabbit IgG, (H+L),

in small aliquots to prevent freeze-thaw cycles.

### Precautions

UCHL1 Antibody (N-term) is for research use only and not for use in diagnostic or therapeutic procedures.

### UCHL1 Antibody (N-term) - Protein Information

**Name** UCHL1

### Function

Ubiquitin-protein hydrolase involved both in the processing of ubiquitin precursors and of ubiquitinated proteins (Probable). This enzyme is a thiol protease that recognizes and hydrolyzes a peptide bond at the C-terminal glycine of ubiquitin (PubMed:<a href="http://www.uniprot.org/citations/9774100" target="\_blank">9774100</a>, PubMed:<a href="http://www.uniprot.org/citations/8639624" target="\_blank">8639624</a>, PubMed:<a href="http://www.uniprot.org/citations/12408865" target="\_blank">12408865</a>, PubMed:<a href="http://www.uniprot.org/citations/23359680" target="\_blank">23359680</a>). Also binds to free monoubiquitin and may prevent its degradation in lysosomes (By similarity). The homodimer may have ATP-independent ubiquitin ligase activity (PubMed:<a href="http://www.uniprot.org/citations/12408865" target="\_blank">12408865</a>).

### Cellular Location

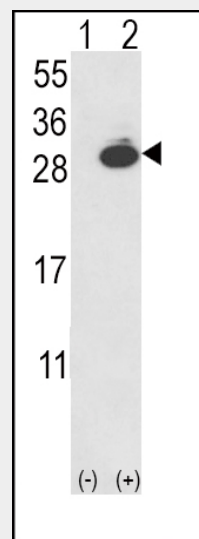
Cytoplasm. Endoplasmic reticulum membrane; Lipid- anchor. Note=About 30% of total UCHL1 is associated with membranes in brain

### Tissue Location

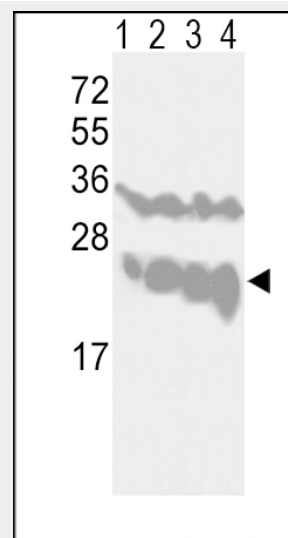
Found in neuronal cell bodies and processes throughout the neocortex (at protein level). Expressed in neurons and cells of the diffuse neuroendocrine system and their tumors. Weakly expressed in ovary. Down-regulated in brains from Parkinson disease and Alzheimer disease patients.

### UCHL1 Antibody (N-term) - Protocols

Peroxidase conjugated at 1/10000 dilution.  
Predicted band size : 25 kDa  
Blocking/Dilution buffer: 5% NFDM/TBST.



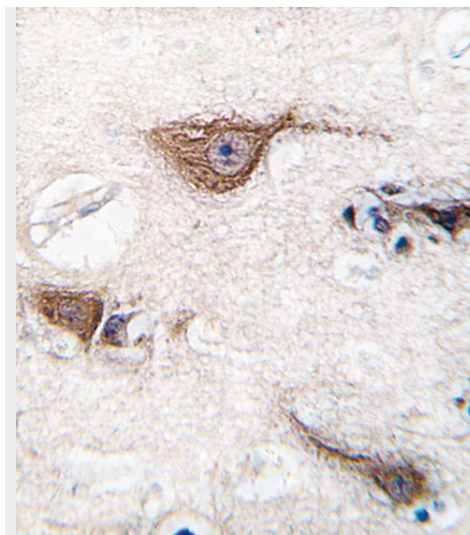
Western blot analysis of UCHL1 (arrow) using rabbit polyclonal UCHL1-V31 (Cat. #AP2126a). 293 cell lysates (2 ug/lane) either nontransfected (Lane 1) or transiently transfected with the UCHL1 gene (Lane 2) (Origene Technologies).



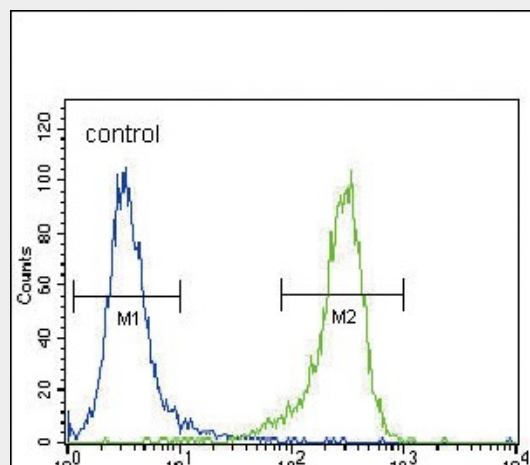
Western blot analysis of UCHL1-V31 (Cat. #AP2126a) in CEM(lane 1), Jurkat(lane 2), Y79(lane 3) cell line and mouse brain tissue(lane 4) lysates (35ug/lane). UCHL1 (arrow) was detected using the purified Pab.

Provided below are standard protocols that you may find useful for product applications.

- [Western Blot](#)
- [Blocking Peptides](#)
- [Dot Blot](#)
- [Immunohistochemistry](#)
- [Immunofluorescence](#)
- [Immunoprecipitation](#)
- [Flow Cytometry](#)
- [Cell Culture](#)



Formalin-fixed and paraffin-embedded human brain tissue reacted with UCHL1 (Park5) antibody (N-term) (Cat. #AP2126a), which was peroxidase-conjugated to the secondary antibody, followed by DAB staining. This data demonstrates the use of this antibody for immunohistochemistry; clinical relevance has not been evaluated.



UCHL1 Antibody (N-term) (Cat. #AP2126a) flow cytometric analysis of NCI-H460 cells (right histogram) compared to a negative control cell (left histogram). FITC-conjugated goat-anti-rabbit secondary antibodies were used for the analysis.

### UCHL1 Antibody (N-term) - Background

UCHL1 is a member of a gene family whose products hydrolyze small C-terminal adducts of ubiquitin to generate the ubiquitin monomer. Expression of UCHL1 is highly specific to neurons and to cells of the diffuse

neuroendocrine system and their tumors. It is present in all neurons (Doran et al., 1983 [PubMed 6343558]).

#### **UCHL1 Antibody (N-term) - References**

Maraganore, D.M., et al., Mov Disord 18(6):631-636 (2003).  
Nishikawa, K., et al., Biochem. Biophys. Res. Commun. 304(1):176-183 (2003).  
Liu, Y., et al., Cell 111(2):209-218 (2002).  
Caballero, O.L., et al., Oncogene 21(19):3003-3010 (2002).  
Saigoh, K., et al., Nat. Genet. 23(1):47-51 (1999).