

**INSM2 Antibody (Center)**  
**Purified Rabbit Polyclonal Antibody (Pab)**  
Catalog # AP21281c**Specification****INSM2 Antibody (Center) - Product Information**

Application	<b>WB,E</b>
Primary Accession	<a href="#">Q96T92</a>
Reactivity	<b>Human</b>
Host	<b>Rabbit</b>
Clonality	<b>polyclonal</b>
Isotype	<b>Rabbit Ig</b>
Calculated MW	<b>59491</b>

**INSM2 Antibody (Center) - Additional Information****Gene ID** 84684**Other Names**

Insulinoma-associated protein 2, Zinc finger protein IA-6, INSM2, IA6

**Target/Specificity**

This INSM2 antibody is generated from a rabbit immunized with a KLH conjugated synthetic peptide between 192-227 amino acids from the Central region of human INSM2.

**Dilution**

WB~~1:1000

**Format**

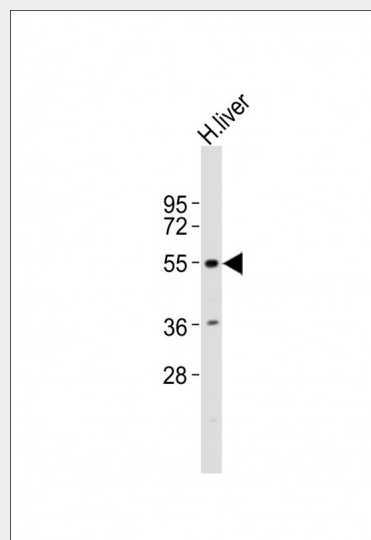
Purified polyclonal antibody supplied in PBS with 0.09% (W/V) sodium azide. This antibody is purified through a protein A column, followed by peptide affinity purification.

**Storage**

Maintain refrigerated at 2-8°C for up to 2 weeks. For long term storage store at -20°C in small aliquots to prevent freeze-thaw cycles.

**Precautions**

INSM2 Antibody (Center) is for research use only and not for use in diagnostic or therapeutic procedures.



Anti-INSM2 Antibody (Center) at 1:1000 dilution + human liver lysates  
Lysates/proteins at 20 µg per lane.  
Secondary Goat Anti-Rabbit IgG, (H+L), Peroxidase conjugated at 1/10000 dilution  
Predicted band size : 59 kDa  
Blocking/Dilution buffer: 5% NFDM/TBST.

**INSM2 Antibody (Center) - Background**

May function as a growth suppressor or tumor suppressor in liver cells and in certain neurons.

**INSM2 Antibody (Center) - References**

Cai T., et al. Submitted (APR-2000) to the EMBL/GenBank/DDBJ databases.  
Halford S., et al. Submitted (JUL-2012) to the EMBL/GenBank/DDBJ databases.  
Ohira M., et al. Cancer Lett. 197:63-68(2003).  
Ota T., et al. Nat. Genet. 36:40-45(2004).  
Heilig R., et al. Nature 421:601-607(2003).

## **INSM2 Antibody (Center) - Protein Information**

**Name** INSM2

**Synonyms** IA6

### **Function**

May function as a growth suppressor or tumor suppressor in liver cells and in certain neurons.

### **Cellular Location**

Cytoplasm. Nucleus.

### **Tissue Location**

Expressed in heart, liver, skeletal muscle, kidney and pancreas, and, to a lesser extent, in brain, lung and spleen. In the pancreas, expressed in islet cells, including insulin- and glucagon-producing alpha- and beta-cells, but not in acinar cells (at protein level). Detected in adrenal glands, particularly in the deeper layer of the cortex (at protein level).

## **INSM2 Antibody (Center) - Protocols**

Provided below are standard protocols that you may find useful for product applications.

- [Western Blot](#)
- [Blocking Peptides](#)
- [Dot Blot](#)
- [Immunohistochemistry](#)
- [Immunofluorescence](#)
- [Immunoprecipitation](#)
- [Flow Cytometry](#)
- [Cell Culture](#)