

TGFB3 Antibody (Center)
Purified Rabbit Polyclonal Antibody (Pab)
Catalog # AP21758c

Specification

TGFB3 Antibody (Center) - Product Information

| | |
|-------------------|------------------------|
| Application | WB,E |
| Primary Accession | P10600 |
| Reactivity | Human, Mouse |
| Host | Rabbit |
| Clonality | polyclonal |
| Isotype | Rabbit Ig |
| Calculated MW | 47328 |

TGFB3 Antibody (Center) - Additional Information

Gene ID 7043

Other Names

Transforming growth factor beta-3,
TGF-beta-3, Latency-associated peptide,
LAP, TGFB3

Target/Specificity

This TGFB3 antibody is generated from a rabbit immunized with a KLH conjugated synthetic peptide between 215-249 amino acids from the Central region of human TGFB3.

Dilution

WB~~1:1000-1:2000

Format

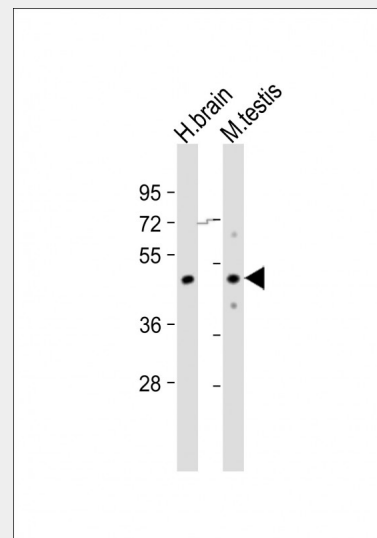
Purified polyclonal antibody supplied in PBS with 0.09% (W/V) sodium azide. This antibody is purified through a protein A column, followed by peptide affinity purification.

Storage

Maintain refrigerated at 2-8°C for up to 2 weeks. For long term storage store at -20°C in small aliquots to prevent freeze-thaw cycles.

Precautions

TGFB3 Antibody (Center) is for research use only and not for use in diagnostic or therapeutic procedures.



All lanes : Anti-TGFB3 Antibody (Center) at 1:1000-1:2000 dilution Lane 1: human brain lysate Lane 2: mouse testis lysate Lysates/proteins at 20 µg per lane. Secondary Goat Anti-Rabbit IgG, (H+L), Peroxidase conjugated at 1/10000 dilution. Predicted band size : 47 kDa Blocking/Dilution buffer: 5% NFDM/TBST.

TGFB3 Antibody (Center) - Background

Involved in embryogenesis and cell differentiation.

TGFB3 Antibody (Center) - References

- ten Dijke P.,et al.Proc. Natl. Acad. Sci. U.S.A. 85:4715-4719(1988).
- Derynck R.,et al.EMBO J. 7:3737-3743(1988).
- Madan A.,et al.Submitted (NOV-1998) to the EMBL/GenBank/DDBJ databases.
- Kalnine N.,et al.Submitted (MAY-2003) to the EMBL/GenBank/DDBJ databases.
- Heilig R.,et al.Nature 421:601-607(2003).

TGFB3 Antibody (Center) - Protein Information

Name TGFB3

Function

Transforming growth factor beta-3 proprotein: Precursor of the Latency-associated peptide (LAP) and Transforming growth factor beta-3 (TGF-beta-3) chains, which constitute the regulatory and active subunit of TGF-beta-3, respectively.

Cellular Location

[Latency-associated peptide]: Secreted, extracellular space, extracellular matrix {ECO:0000250|UniProtKB:P01137}

TGFB3 Antibody (Center) - Protocols

Provided below are standard protocols that you may find useful for product applications.

- [Western Blot](#)
- [Blocking Peptides](#)
- [Dot Blot](#)
- [Immunohistochemistry](#)
- [Immunofluorescence](#)
- [Immunoprecipitation](#)
- [Flow Cytometry](#)
- [Cell Culture](#)