

**ATXN2 Antibody (Center)**  
**Purified Rabbit Polyclonal Antibody (Pab)**  
**Catalog # AP21768c**

**Specification**

**ATXN2 Antibody (Center) - Product Information**

Application	<b>WB,E</b>
Primary Accession	<a href="#">Q99700</a>
Reactivity	<b>Human</b>
Host	<b>Rabbit</b>
Clonality	<b>polyclonal</b>
Isotype	<b>Rabbit Ig</b>
Calculated MW	<b>140283</b>

**ATXN2 Antibody (Center) - Additional Information**

**Gene ID 6311**

**Other Names**

Ataxin-2, Spinocerebellar ataxia type 2 protein, Trinucleotide repeat-containing gene 13 protein, ATXN2, ATX2, SCA2, TNRC13

**Target/Specificity**

This ATXN2 antibody is generated from a rabbit immunized with a KLH conjugated synthetic peptide between 725-757 amino acids from the Central region of human ATXN2.

**Dilution**

WB~~1:2000

**Format**

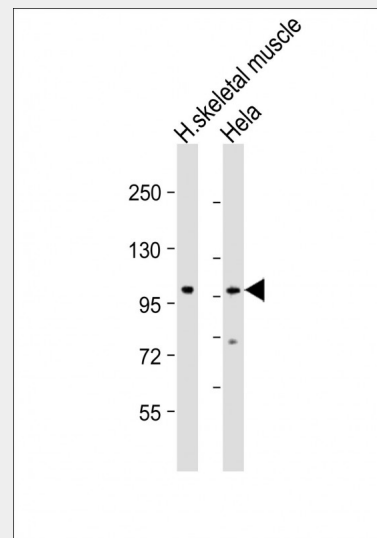
Purified polyclonal antibody supplied in PBS with 0.09% (W/V) sodium azide. This antibody is purified through a protein A column, followed by peptide affinity purification.

**Storage**

Maintain refrigerated at 2-8°C for up to 2 weeks. For long term storage store at -20°C in small aliquots to prevent freeze-thaw cycles.

**Precautions**

ATXN2 Antibody (Center) is for research use only and not for use in diagnostic or therapeutic procedures.



All lanes : Anti-ATXN2 Antibody (Center) at 1:2000 dilution Lane 1: human skeletal muscle lysate Lane 2: HeLa whole cell lysate Lysates/proteins at 20 µg per lane. Secondary Goat Anti-Rabbit IgG, (H+L), Peroxidase conjugated at 1/10000 dilution. Predicted band size : 140 kDa Blocking/Dilution buffer: 5% NFDM/TBST.

**ATXN2 Antibody (Center) - Background**

Involved in EGFR trafficking, acting as negative regulator of endocytic EGFR internalization at the plasma membrane.

**ATXN2 Antibody (Center) - References**

- Pulst S.-M.,et al.Nat. Genet. 14:269-276(1996).
- Sanpei K.,et al.Nat. Genet. 14:277-284(1996).
- Ota T.,et al.Nat. Genet. 36:40-45(2004).
- Scherer S.E.,et al.Nature 440:346-351(2006).
- Imbert G.,et al.Nat. Genet. 14:285-291(1996).

**ATXN2 Antibody (Center) - Protein Information**

**Name** ATXN2

**Synonyms** ATX2, SCA2, TNRC13

**Function**

Involved in EGFR trafficking, acting as negative regulator of endocytic EGFR internalization at the plasma membrane.

**Cellular Location**

Cytoplasm.

**Tissue Location**

Expressed in the brain, heart, liver, skeletal muscle, pancreas and placenta. Isoform 1 is predominant in the brain and spinal cord. Isoform 4 is more abundant in the cerebellum. In the brain, broadly expressed in the amygdala, caudate nucleus, corpus callosum, hippocampus, hypothalamus, substantia nigra, subthalamic nucleus and thalamus.

**ATXN2 Antibody (Center) - Protocols**

Provided below are standard protocols that you may find useful for product applications.

- [Western Blot](#)
- [Blocking Peptides](#)
- [Dot Blot](#)
- [Immunohistochemistry](#)
- [Immunofluorescence](#)
- [Immunoprecipitation](#)
- [Flow Cytometry](#)
- [Cell Culture](#)