

**TSC22D1 Antibody (C-Term)**  
**Purified Rabbit Polyclonal Antibody (Pab)**  
**Catalog # AP21981b**

**Specification**

**TSC22D1 Antibody (C-Term) - Product Information**

Application	<b>WB,E</b>
Primary Accession	<a href="#">Q15714</a>
Reactivity	<b>Human</b>
Host	<b>Rabbit</b>
Clonality	<b>polyclonal</b>
Isotype	<b>Rabbit Ig</b>
Calculated MW	<b>109677</b>

**TSC22D1 Antibody (C-Term) - Additional Information**

**Gene ID 8848**

**Other Names**

TSC22 domain family protein 1, Cerebral protein 2, Regulatory protein TSC-22, TGFB-stimulated clone 22 homolog, Transforming growth factor beta-1-induced transcript 4 protein, TSC22D1, KIAA1994, TGFB1I4, TSC22

**Target/Specificity**

This TSC22D1 antibody is generated from a rabbit immunized with a KLH conjugated synthetic peptide between 888-920 amino acids from human TSC22D1.

**Dilution**

WB~~1:2000

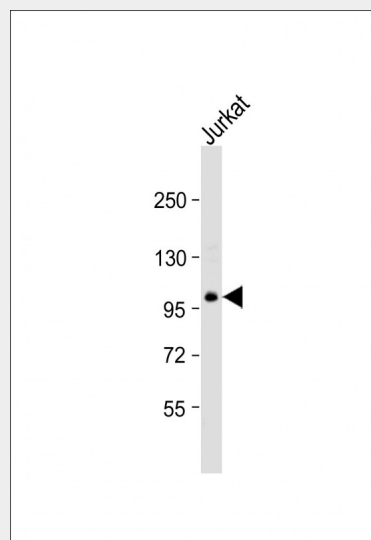
**Format**

Purified polyclonal antibody supplied in PBS with 0.09% (W/V) sodium azide. This antibody is purified through a protein A column, followed by peptide affinity purification.

**Storage**

Maintain refrigerated at 2-8°C for up to 2 weeks. For long term storage store at -20°C in small aliquots to prevent freeze-thaw cycles.

**Precautions**



Anti-TSC22D1 Antibody (C-Term) at 1:2000 dilution + Jurkat whole cell lysate Lysates/proteins at 20 µg per lane. Secondary Goat Anti-Rabbit IgG, (H+L), Peroxidase conjugated at 1/10000 dilution. Predicted band size : 110 kDa Blocking/Dilution buffer: 5% NFDM/TBST.

**TSC22D1 Antibody (C-Term) - Background**

Transcriptional repressor. Acts on the C-type natriuretic peptide (CNP) promoter.

**TSC22D1 Antibody (C-Term) - References**

- Jay P.,et al.Biochem. Biophys. Res. Commun. 222:821-826(1996).  
Ohta S.,et al.Eur. J. Biochem. 242:460-466(1996).  
Dmitrenko V.V.,et al.Cyt. Genet. 30:41-47(1996).  
Yazaki M.,et al.Submitted (AUG-1996) to the EMBL/GenBank/DDBJ databases.  
Kawamata H.,et al.Submitted (APR-2000) to the EMBL/GenBank/DDBJ databases.

TSC22D1 Antibody (C-Term) is for research use only and not for use in diagnostic or therapeutic procedures.

#### **TSC22D1 Antibody (C-Term) - Protein Information**

**Name** TSC22D1

**Synonyms** KIAA1994, TGFB114, TSC22

#### **Function**

Transcriptional repressor. Acts on the C-type natriuretic peptide (CNP) promoter.

#### **Cellular Location**

Cytoplasm. Nucleus.

#### **Tissue Location**

Widely expressed in fetal and adult tissues.

#### **TSC22D1 Antibody (C-Term) - Protocols**

Provided below are standard protocols that you may find useful for product applications.

- [Western Blot](#)
- [Blocking Peptides](#)
- [Dot Blot](#)
- [Immunohistochemistry](#)
- [Immunofluorescence](#)
- [Immunoprecipitation](#)
- [Flow Cytometry](#)
- [Cell Culture](#)