

MTUS2 Antibody (C-Term)
Purified Rabbit Polyclonal Antibody (Pab)
 Catalog # AP22059b

Specification

MTUS2 Antibody (C-Term) - Product Information

Application	WB,E
Primary Accession	Q5JR59
Reactivity	Human
Host	Rabbit
Clonality	polyclonal
Isotype	Rabbit Ig
Calculated MW	150195

MTUS2 Antibody (C-Term) - Additional Information

Gene ID 23281

Other Names

Microtubule-associated tumor suppressor candidate 2, Cardiac zipper protein, Microtubule plus-end tracking protein TIP150, Tracking protein of 150 kDa, MTUS2, CAZIP, KIAA0774, TIP150

Target/Specificity

This MTUS2 antibody is generated from a rabbit immunized with a KLH conjugated synthetic peptide between 917-949 amino acids from human MTUS2.

Dilution

WB~~1:2000

Format

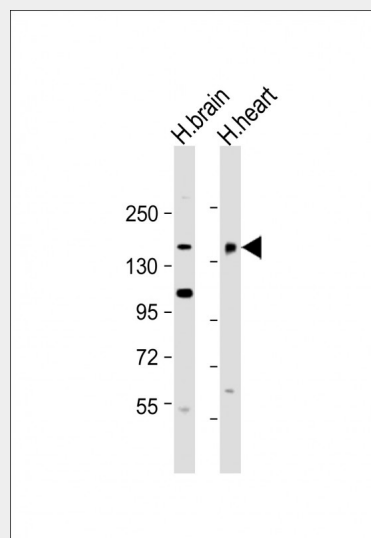
Purified polyclonal antibody supplied in PBS with 0.09% (W/V) sodium azide. This antibody is purified through a protein A column, followed by peptide affinity purification.

Storage

Maintain refrigerated at 2-8°C for up to 2 weeks. For long term storage store at -20°C in small aliquots to prevent freeze-thaw cycles.

Precautions

MTUS2 Antibody (C-Term) is for research use only and not for use in diagnostic or



All lanes : Anti-MTUS2 Antibody (C-Term) at 1:2000 dilution Lane 1: human brain lysate Lane 2: human heart lysate Lysates/proteins at 20 µg per lane. Secondary Goat Anti-Rabbit IgG, (H+L), Peroxidase conjugated at 1/10000 dilution. Predicted band size : 150 kDa Blocking/Dilution buffer: 5% NFD/MTBST.

MTUS2 Antibody (C-Term) - Background

Binds microtubules. Together with MAPRE1 may target the microtubule depolymerase KIF2C to the plus-end of microtubules. May regulate the dynamics of microtubules at their growing distal tip.

MTUS2 Antibody (C-Term) - References

Nagase T.,et al.DNA Res. 5:277-286(1998).
 Ohara O.,et al.Submitted (AUG-2005) to the EMBL/GenBank/DDBJ databases.
 Ota T.,et al.Nat. Genet. 36:40-45(2004).
 Dunham A.,et al.Nature 428:522-528(2004).
 Du Puy L.,et al.Dev. Dyn. 238:2903-2911(2009).

therapeutic procedures.

MTUS2 Antibody (C-Term) - Protein Information

Name MTUS2

Synonyms CAZIP, KIAA0774, TIP150

Function

Binds microtubules. Together with MAPRE1 may target the microtubule depolymerase KIF2C to the plus-end of microtubules. May regulate the dynamics of microtubules at their growing distal tip.

Cellular Location

Cytoplasm, cytoskeleton. Note=Associated with the microtubule network at the growing distal tip (the plus-end) of microtubules

Tissue Location

Detected in embryonic stem cells differentiating to cardiomyocytes.

MTUS2 Antibody (C-Term) - Protocols

Provided below are standard protocols that you may find useful for product applications.

- [Western Blot](#)
- [Blocking Peptides](#)
- [Dot Blot](#)
- [Immunohistochemistry](#)
- [Immunofluorescence](#)
- [Immunoprecipitation](#)
- [Flow Cytometry](#)
- [Cell Culture](#)