

C1GALT1C1 Antibody (N-Term)
Purified Rabbit Polyclonal Antibody (Pab)
Catalog # AP22217a

Specification

C1GALT1C1 Antibody (N-Term) - Product Information

Application	WB,E
Primary Accession	Q96EU7
Other Accession	Q3SX46
Reactivity	Human
Predicted	Bovine
Host	Rabbit
Clonality	polyclonal
Isotype	Rabbit Ig
Calculated MW	36382

C1GALT1C1 Antibody (N-Term) - Additional Information

Gene ID 29071

Other Names

C1GALT1-specific chaperone 1, C38H2-like protein 1, C38H2-L1, Core 1 beta1, 3-galactosyltransferase 2, C1Gal-T2, C1GalT2, Core 1 beta3-Gal-T2, Core 1 beta3-galactosyltransferase-specific molecular chaperone, C1GALT1C1, COSMC

Target/Specificity

This C1GALT1C1 antibody is generated from a rabbit immunized with a KLH conjugated synthetic peptide between 26-60 amino acids from human C1GALT1C1.

Dilution

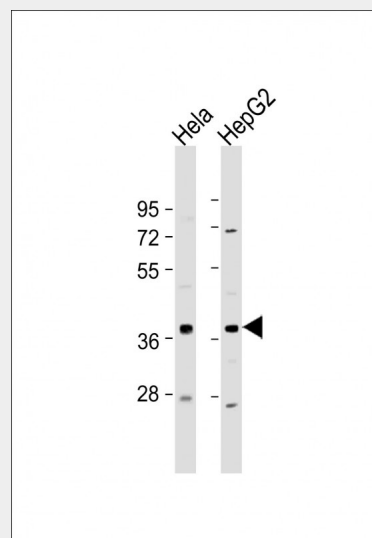
WB~~1:2000

Format

Purified polyclonal antibody supplied in PBS with 0.09% (W/V) sodium azide. This antibody is purified through a protein A column, followed by peptide affinity purification.

Storage

Maintain refrigerated at 2-8°C for up to 2 weeks. For long term storage store at -20°C in small aliquots to prevent freeze-thaw cycles.



All lanes : Anti-C1GALT1C1 Antibody (N-Term) at 1:2000 dilution Lane 1: Hela whole cell lysate Lane 2: HepG2 whole cell lysate Lysates/proteins at 20 µg per lane. Secondary Goat Anti-Rabbit IgG, (H+L), Peroxidase conjugated at 1/10000 dilution. Predicted band size : 36 kDa Blocking/Dilution buffer: 5% NFDM/TBST.

C1GALT1C1 Antibody (N-Term) - Background

Probable chaperone required for the generation of 1 O- glycan Gal-beta1-3GalNAc-alpha1-Ser/Thr (T antigen), which is a precursor for many extended O-glycans in glycoproteins. Probably acts as a specific molecular chaperone assisting the folding/stability of core 1 beta-3-galactosyltransferase (C1GALT1).

C1GALT1C1 Antibody (N-Term) - References

Kudo T.,et al.J. Biol. Chem. 277:47724-47731(2002).
Kudo T.,et al.J. Biol. Chem. 281:24999-24999(2006).

Precautions

C1GALT1C1 Antibody (N-Term) is for research use only and not for use in diagnostic or therapeutic procedures.

Ju T.,et al.Proc. Natl. Acad. Sci. U.S.A.

99:16613-16618(2002).

Rubboli F.,et al.Submitted (APR-1999) to the EMBL/GenBank/DDBJ databases.

Zhang Q.-H.,et al.Genome Res.

10:1546-1560(2000).

C1GALT1C1 Antibody (N-Term) - Protein Information

Name C1GALT1C1

Synonyms COSMC

Function

Probable chaperone required for the generation of 1 O-glycan Gal-beta1-3GalNAc-alpha1-Ser/Thr (T antigen), which is a precursor for many extended O-glycans in glycoproteins. Probably acts as a specific molecular chaperone assisting the folding/stability of core 1 beta-3- galactosyltransferase (C1GALT1).

Cellular Location

Membrane; Single-pass type II membrane protein

Tissue Location

Ubiquitously expressed. Abundantly expressed in salivary gland, stomach, small intestine, kidney, and testis and at intermediate levels in whole brain, cerebellum, spinal cord, thymus, spleen, trachea, lung, pancreas, ovary, and uterus

C1GALT1C1 Antibody (N-Term) - Protocols

Provided below are standard protocols that you may find useful for product applications.

- [Western Blot](#)
- [Blocking Peptides](#)
- [Dot Blot](#)
- [Immunohistochemistry](#)
- [Immunofluorescence](#)
- [Immunoprecipitation](#)
- [Flow Cytometry](#)
- [Cell Culture](#)

C1GALT1C1 Antibody (N-Term) - Citations

- [C1GALT1C1/COSMC is a novel prognostic biomarker for hepatocellular carcinoma.](#)