

## RGMB Antibody

### Purified Rabbit Polyclonal Antibody (Pab)

Catalog # AP22293a

### Specification

#### RGMB Antibody - Product Information

Application	WB, IHC-P-Leica,E
Primary Accession	<a href="#">Q6NW40</a>
Reactivity	Human, Mouse
Host	Rabbit
Clonality	polyclonal
Isotype	Rabbit Ig
Calculated MW	47547

#### RGMB Antibody - Additional Information

Gene ID 285704

#### Other Names

RGM domain family member B,  
DRG11-responsive axonal guidance and  
outgrowth of neurite, DRAGON, RGMB

#### Target/Specificity

This RGMB antibody is generated from a rabbit immunized with a recombinant protein of human RGMB.

#### Dilution

WB~~1:2000  
IHC-P-Leica~~1:500

#### Format

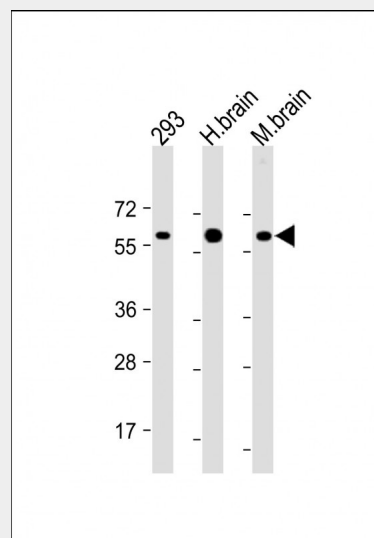
Purified polyclonal antibody supplied in PBS with 0.09% (W/V) sodium azide. This antibody is purified through a protein A column, followed by peptide affinity purification.

#### Storage

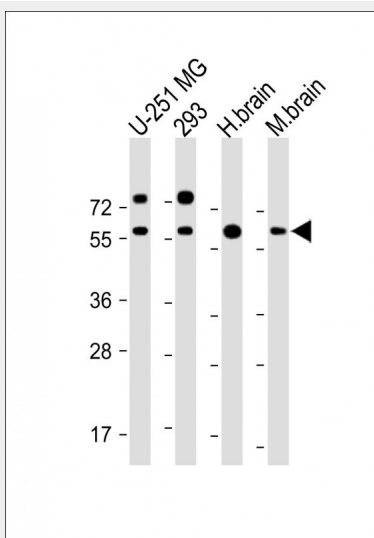
Maintain refrigerated at 2-8°C for up to 2 weeks. For long term storage store at -20°C in small aliquots to prevent freeze-thaw cycles.

#### Precautions

RGMB Antibody is for research use only and not for use in diagnostic or therapeutic procedures.



All lanes : Anti-RGMB Antibody at 1:2000 dilution Lane 1: 293 whole cell lysate Lane 2: Human brain lysate Lane 3: Mouse brain lysate Lysates/proteins at 20 µg per lane. Secondary Goat Anti-Rabbit IgG, (H+L), Peroxidase conjugated at 1/10000 dilution. Predicted band size : 48 kDa Blocking/Dilution buffer: 5% NFDM/TBST.



All lanes : Anti-RGMB Antibody at 1:2000 dilution Lane 1: U-251 MG whole cell lysate Lane 2: 293 whole cell lysate Lane 3: Human

**RGMB Antibody - Protein Information****Name** RGMB

{ECO:0000303|PubMed:19324014,  
ECO:0000312|HGNC:HGNC:26896}

**Function**

Member of the repulsive guidance molecule (RGM) family that contributes to the patterning of the developing nervous system (By similarity). Acts as a bone morphogenetic protein (BMP) coreceptor that potentiates BMP signaling (By similarity). Promotes neuronal adhesion (By similarity). May inhibit neurite outgrowth.

**Cellular Location**

Cell membrane

{ECO:0000250|UniProtKB:Q7TQ33};

Lipid-anchor, GPI-anchor

{ECO:0000250|UniProtKB:Q7TQ33}.

Membrane raft

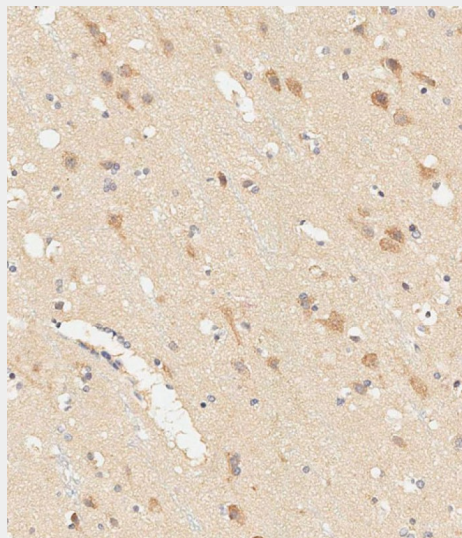
{ECO:0000250|UniProtKB:Q7TQ33}

**RGMB Antibody - Protocols**

Provided below are standard protocols that you may find useful for product applications.

- [Western Blot](#)
- [Blocking Peptides](#)
- [Dot Blot](#)
- [Immunohistochemistry](#)
- [Immunofluorescence](#)
- [Immunoprecipitation](#)
- [Flow Cytometry](#)
- [Cell Culture](#)

brain lysate Lane 4: Mouse brain lysate  
Lysates/proteins at 20 µg per lane.  
Secondary Goat Anti-Rabbit IgG, (H+L),  
Peroxidase conjugated at 1/10000 dilution.  
Predicted band size : 48 kDa  
Blocking/Dilution buffer: 5% NFDM/TBST.



Immunohistochemical analysis of paraffin-embedded human brain tissue using AP22293a performed on the Leica® BOND RXm. Samples were incubated with primary antibody(1/500) for 1 hours at room temperature. A undiluted biotinylated CRF Anti-Polyvalent HRP Polymer antibody was used as the secondary antibody.

**RGMB Antibody - Background**

Member of the repulsive guidance molecule (RGM) family that contributes to the patterning of the developing nervous system (By similarity). Acts as a bone morphogenetic protein (BMP) coreceptor that potentiates BMP signaling (By similarity). Promotes neuronal adhesion (By similarity). May inhibit neurite outgrowth.

**RGMB Antibody - References**

Ota T.,et al.Nat. Genet. 36:40-45(2004).  
Schmutz J.,et al.Nature 431:268-274(2004).  
Liu X.,et al.Biochem. Biophys. Res. Commun. 382:795-800(2009).  
Bell C.H.,et al.Science 341:77-80(2013).