

**Msx2 Antibody (C-term)**  
**Affinity Purified Rabbit Polyclonal Antibody (Pab)**  
**Catalog # AP2709B**

**Specification**

**Msx2 Antibody (C-term) - Product Information**

Application	<b>WB, IHC-P,E</b>
Primary Accession	<a href="#">P35548</a>
Reactivity	<b>Human</b>
Host	<b>Rabbit</b>
Clonality	<b>Polyclonal</b>
Isotype	<b>Rabbit Ig</b>
Calculated MW	<b>28897</b>
Antigen Region	<b>191-222</b>

**Msx2 Antibody (C-term) - Additional Information**

**Gene ID 4488**

**Other Names**

Homeobox protein MSX-2, Homeobox protein Hox-8, MSX2, HOX8

**Target/Specificity**

This Msx2 antibody is generated from rabbits immunized with a KLH conjugated synthetic peptide between 191-222 amino acids from the C-terminal region of human Msx2.

**Dilution**

WB~~1:1000

IHC-P~~1:10~50

**Format**

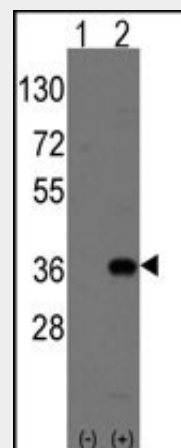
Purified polyclonal antibody supplied in PBS with 0.09% (W/V) sodium azide. This antibody is purified through a protein A column, followed by peptide affinity purification.

**Storage**

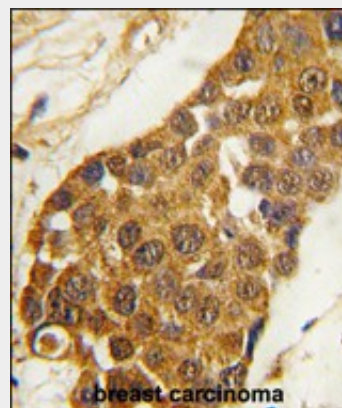
Maintain refrigerated at 2-8°C for up to 2 weeks. For long term storage store at -20°C in small aliquots to prevent freeze-thaw cycles.

**Precautions**

Msx2 Antibody (C-term) is for research use only and not for use in diagnostic or therapeutic procedures.



Western blot analysis of Msx2 (arrow) using rabbit polyclonal Msx2 Antibody (Human C-term) (Cat.#AP2709b). 293 cell lysates (2 ug/lane) either nontransfected (Lane 1) or transiently transfected with the Msx2 gene (Lane 2) (Origene Technologies).



Formalin-fixed and paraffin-embedded human breast carcinoma tissue reacted with Msx2 Antibody (C-term) (Cat.#AP2709b), which was peroxidase-conjugated to the secondary antibody, followed by DAB staining. This data demonstrates the use of this antibody for immunohistochemistry; clinical relevance has not been evaluated.

**Msx2 Antibody (C-term) - Background**

**Msx2 Antibody (C-term) - Protein Information****Name** MSX2**Synonyms** HOX8**Function**

Acts as a transcriptional regulator in bone development. Represses the ALPL promoter activity and antagonizes the stimulatory effect of DLX5 on ALPL expression during osteoblast differentiation. Probable morphogenetic role. May play a role in limb-pattern formation. In osteoblasts, suppresses transcription driven by the osteocalcin FGF response element (OCFRE). Binds to the homeodomain-response element of the ALPL promoter.

**Cellular Location**

Nucleus.

This gene encodes a member of the muscle segment homeobox gene family. The encoded protein is a transcriptional repressor whose normal activity may establish a balance between survival and apoptosis of neural crest-derived cells required for proper craniofacial morphogenesis. The encoded protein may also have a role in promoting cell growth under certain conditions and may be an important target for the RAS signaling pathways. Mutations in this gene are associated with parietal foramina 1 and craniosynostosis type 2.

**Msx2 Antibody (C-term) - References**

Shao,J.S., Ann. N. Y. Acad. Sci. 1117, 40-50 (2007)  
Han,J., Mech. Dev. 124 (9-10), 729-745 (2007)  
Ghassibe,M., Eur. J. Pediatr. 165 (10), 734-735 (2006)

**Msx2 Antibody (C-term) - Protocols**

Provided below are standard protocols that you may find useful for product applications.

- [Western Blot](#)
- [Blocking Peptides](#)
- [Dot Blot](#)
- [Immunohistochemistry](#)
- [Immunofluorescence](#)
- [Immunoprecipitation](#)
- [Flow Cytometry](#)
- [Cell Culture](#)