

**FZD1 Antibody (C-term)**  
**Purified Rabbit Polyclonal Antibody (Pab)**  
**Catalog # AP2755B**

**Specification**

**FZD1 Antibody (C-term) - Product Information**

Application	WB,E
Primary Accession	<a href="#">Q9UP38</a>
Other Accession	<a href="#">Q61090</a> , <a href="#">Q75084</a> , <a href="#">Q57329</a> , <a href="#">Q8AVJ9</a> , <a href="#">Q9PUK8</a> , <a href="#">Q9I9M5</a> , <a href="#">Q08463</a> , <a href="#">Q70421</a> , <a href="#">Q57328</a>
Reactivity Predicted	Human Chicken, Mouse, Rat, Xenopus
Host	Rabbit
Clonality	Polyclonal
Isotype	Rabbit Ig
Antigen Region	504-533

**FZD1 Antibody (C-term) - Additional Information**

**Gene ID** 8321

**Other Names**

Frizzled-1, Fz-1, hFz1, FzE1, FZD1

**Target/Specificity**

This FZD1 antibody is generated from rabbits immunized with a KLH conjugated synthetic peptide between 504-533 amino acids from the C-terminal region of human FZD1.

**Dilution**

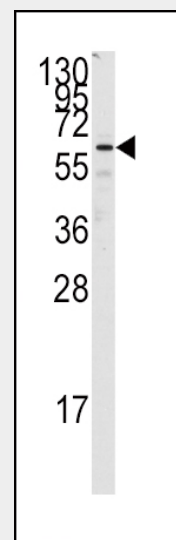
WB~1:1000

**Format**

Purified polyclonal antibody supplied in PBS with 0.09% (W/V) sodium azide. This antibody is prepared by Saturated Ammonium Sulfate (SAS) precipitation followed by dialysis against PBS.

**Storage**

Maintain refrigerated at 2-8°C for up to 2 weeks. For long term storage store at -20°C in small aliquots to prevent freeze-thaw cycles.



Western blot analysis of anti-FZD1 Antibody (C-term) (Cat.#AP2755b) in Jurkat cell line lysates (35ug/lane).FZD1(arrow) was detected using the purified Pab.

**FZD1 Antibody (C-term) - Background**

Members of the 'frizzled' protein family are 7-transmembrane domain proteins that are receptors for Wnt signaling proteins. The FZD1 protein contains a signal peptide, a cysteine-rich domain in the N-terminal extracellular region, 7 transmembrane domains, and a C-terminal PDZ domain-binding motif. The FZD1 transcript is expressed in various tissues.

**FZD1 Antibody (C-term) - References**

Quelard,D., (er) PLoS ONE 3 (4), E1878 (2008)  
Hardie,W.D.,Am. J. Respir. Cell Mol. Biol. 37 (3), 309-321 (2007)  
Yang,L., J. Dermatol. Sci. 42 (2), 111-119 (2006)

**Precautions**

FZD1 Antibody (C-term) is for research use only and not for use in diagnostic or therapeutic procedures.

**FZD1 Antibody (C-term) - Protein Information****Name FZD1****Function**

Receptor for Wnt proteins (PubMed:<a href="http://www.uniprot.org/citations/10557084" target="\_blank">10557084</a>).

Activated by WNT3A, WNT3, WNT1 and to a lesser extent WNT2, but apparently not by WNT4, WNT5A, WNT5B, WNT6, WNT7A or WNT7B (PubMed:<a href="http://www.uniprot.org/citations/10557084" target="\_blank">10557084</a>).

Contradictory results showing activation by WNT7B have been described for mouse (By similarity). Functions in the canonical Wnt/beta-catenin signaling pathway (PubMed:<a href="http://www.uniprot.org/citations/10557084" target="\_blank">10557084</a>).

The canonical Wnt/beta-catenin signaling pathway leads to the activation of disheveled proteins, inhibition of GSK-3 kinase, nuclear accumulation of beta-catenin and activation of Wnt target genes (PubMed:<a href="http://www.uniprot.org/citations/10557084" target="\_blank">10557084</a>). A second signaling pathway involving PKC and calcium fluxes has been seen for some family members, but it is not yet clear if it represents a distinct pathway or if it can be integrated in the canonical pathway, as PKC seems to be required for Wnt-mediated inactivation of GSK-3 kinase. Both pathways seem to involve interactions with G-proteins. May be involved in transduction and intercellular transmission of polarity information during tissue morphogenesis and/or in differentiated tissues (Probable).

**Cellular Location**

Cell membrane; Multi-pass membrane protein

**Tissue Location**

Expressed in adult heart, placenta, lung, kidney, pancreas, prostate, and ovary and in fetal lung and kidney

**FZD1 Antibody (C-term) - Protocols**

Provided below are standard protocols that you may find useful for product applications.

- [Western Blot](#)
- [Blocking Peptides](#)
- [Dot Blot](#)
- [Immunohistochemistry](#)
- [Immunofluorescence](#)
- [Immunoprecipitation](#)
- [Flow Cytometry](#)
- [Cell Culture](#)

**FZD1 Antibody (C-term) - Citations**

- [Overexpression of FZD1 and CAIX are Associated with Invasion, Metastasis, and Poor-Prognosis of the Pancreatic Ductal Adenocarcinoma.](#)
- [Transcriptional Regulation of Frizzled-1 in Human Osteoblasts by Sp1.](#)
- [Functional and association analysis of frizzled 1 \(FZD1\) promoter haplotypes with femoral neck geometry.](#)