

**U2AF1 Antibody (Center S70)**  
**Purified Rabbit Polyclonal Antibody (Pab)**  
**Catalog # AP2802c**

**Specification**

**U2AF1 Antibody (Center S70) - Product Information**

Application	WB, IHC-P,E
Primary Accession	<a href="#">Q01081</a>
Other Accession	<a href="#">Q9D883</a> , <a href="#">A1A4K8</a> , <a href="#">P0DN76</a>
Reactivity	Human
Predicted	Bovine, Mouse
Host	Rabbit
Clonality	Polyclonal
Isotype	Rabbit Ig
Calculated MW	27872
Antigen Region	55-83

**U2AF1 Antibody (Center S70) - Additional Information**

**Gene ID** 102724594;7307

**Other Names**

Splicing factor U2AF 35 kDa subunit, U2 auxiliary factor 35 kDa subunit, U2 small nuclear RNA auxiliary factor 1, U2 snRNP auxiliary factor small subunit, U2AF1, U2AF35, U2AFBP

**Target/Specificity**

This U2AF1 antibody is generated from rabbits immunized with a KLH conjugated synthetic peptide between 55-83 amino acids from the Central region of human U2AF1.

**Dilution**

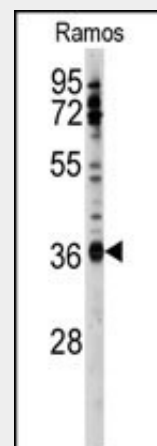
WB~~1:1000  
IHC-P~~1:50~100

**Format**

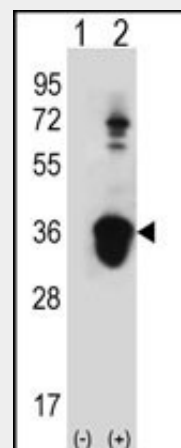
Purified polyclonal antibody supplied in PBS with 0.09% (W/V) sodium azide. This antibody is prepared by Saturated Ammonium Sulfate (SAS) precipitation followed by dialysis against PBS.

**Storage**

Maintain refrigerated at 2-8°C for up to 2



Western blot analysis of anti-U2AF1 Antibody (Center S70) (Cat.#AP2802c) in Ramos cell line lysates (35ug/lane).U2AF1(arrow) was detected using the purified Pab.



Western blot analysis of U2AF1 (arrow) using rabbit polyclonal U2AF1 Antibody (Center S70) (Cat.#AP2802c). 293 cell lysates (2 ug/lane) either nontransfected (Lane 1) or transiently transfected (Lane 2) with the U2AF1 gene.

weeks. For long term storage store at -20°C in small aliquots to prevent freeze-thaw cycles.

**Precautions**

U2AF1 Antibody (Center S70) is for research use only and not for use in diagnostic or therapeutic procedures.

**U2AF1 Antibody (Center S70) - Protein Information**

**Name** U2AF1

**Synonyms** U2AF35, U2AFBP

**Function**

Plays a critical role in both constitutive and enhancer- dependent splicing by mediating protein-protein interactions and protein-RNA interactions required for accurate 3'-splice site selection. Recruits U2 snRNP to the branch point. Directly mediates interactions between U2AF2 and proteins bound to the enhancers and thus may function as a bridge between U2AF2 and the enhancer complex to recruit it to the adjacent intron.

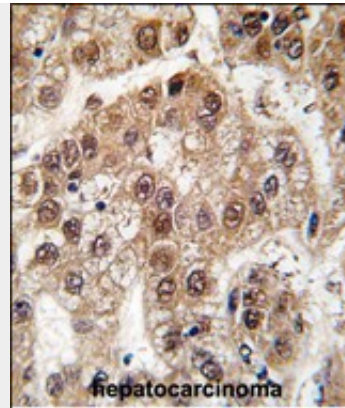
**Cellular Location**

Nucleus. Nucleus speckle

**U2AF1 Antibody (Center S70) - Protocols**

Provided below are standard protocols that you may find useful for product applications.

- [Western Blot](#)
- [Blocking Peptides](#)
- [Dot Blot](#)
- [Immunohistochemistry](#)
- [Immunofluorescence](#)
- [Immunoprecipitation](#)
- [Flow Cytometry](#)
- [Cell Culture](#)



Formalin-fixed and paraffin-embedded human hepatocarcinoma tissue reacted with U2AF1 antibody (Center S70), which was peroxidase-conjugated to the secondary antibody, followed by DAB staining. This data demonstrates the use of this antibody for immunohistochemistry; clinical relevance has not been evaluated.

**U2AF1 Antibody (Center S70) - Background**

U2AF1 belongs to the splicing factor SR family. U2 auxiliary factor, comprising a large and a small subunit, is a non-snRNP protein required for the binding of U2 snRNP to the pre-mRNA branch site. This gene encodes the small subunit which plays a critical role in both constitutive and enhancer-dependent RNA splicing by directly mediating interactions between the large subunit and proteins bound to the enhancers.

**U2AF1 Antibody (Center S70) - References**

Rino,J., Mol. Cell. Biol. 28 (9), 3045-3057 (2008) Little,J.T., J. Biol. Chem. 283 (13), 8145-8152 (2008) Pacheco,T.R., Mol. Cell. Biol. 26 (21), 8183-8190 (2006)