

U2AF1 Antibody (Center Y114)
Purified Rabbit Polyclonal Antibody (Pab)
Catalog # AP2802d

Specification

U2AF1 Antibody (Center Y114) - Product Information

Application	WB, IHC-P, FC,E
Primary Accession	Q01081
Other Accession	Q9D883 , A1A4K8 , P0DN76
Reactivity	Human
Predicted	Bovine, Mouse
Host	Rabbit
Clonality	Polyclonal
Isotype	Rabbit Ig
Calculated MW	27872
Antigen Region	99-125

U2AF1 Antibody (Center Y114) - Additional Information

Gene ID 102724594;7307

Other Names

Splicing factor U2AF 35 kDa subunit, U2 auxiliary factor 35 kDa subunit, U2 small nuclear RNA auxiliary factor 1, U2 snRNP auxiliary factor small subunit, U2AF1, U2AF35, U2AFBP

Target/Specificity

This U2AF1 antibody is generated from rabbits immunized with a KLH conjugated synthetic peptide between 99-125 amino acids from the Central region of human U2AF1.

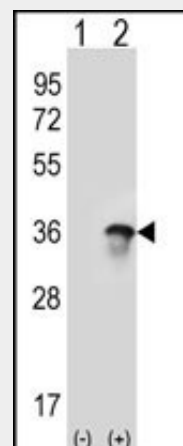
Dilution

WB~~1:1000
IHC-P~~1:50~100
FC~~1:10~50

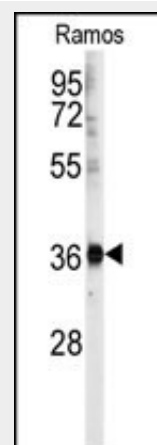
Format

Purified polyclonal antibody supplied in PBS with 0.09% (W/V) sodium azide. This antibody is prepared by Saturated Ammonium Sulfate (SAS) precipitation followed by dialysis against PBS.

Storage



Western blot analysis of U2AF1 (arrow) using rabbit polyclonal U2AF1 Antibody (Center Y114) (Cat. #AP2802d). 293 cell lysates (2 ug/lane) either nontransfected (Lane 1) or transiently transfected (Lane 2) with the U2AF1 gene.



Western blot analysis of anti-U2AF1 Antibody (Center Y114) (Cat.#AP2802d) in Ramos cell line lysates (35ug/lane).U2AF1(arrow) was detected using the purified Pab.

Maintain refrigerated at 2-8°C for up to 2 weeks. For long term storage store at -20°C in small aliquots to prevent freeze-thaw cycles.

Precautions

U2AF1 Antibody (Center Y114) is for research use only and not for use in diagnostic or therapeutic procedures.

U2AF1 Antibody (Center Y114) - Protein Information

Name U2AF1

Synonyms U2AF35, U2AFBP

Function

Plays a critical role in both constitutive and enhancer- dependent splicing by mediating protein-protein interactions and protein-RNA interactions required for accurate 3'-splice site selection. Recruits U2 snRNP to the branch point. Directly mediates interactions between U2AF2 and proteins bound to the enhancers and thus may function as a bridge between U2AF2 and the enhancer complex to recruit it to the adjacent intron.

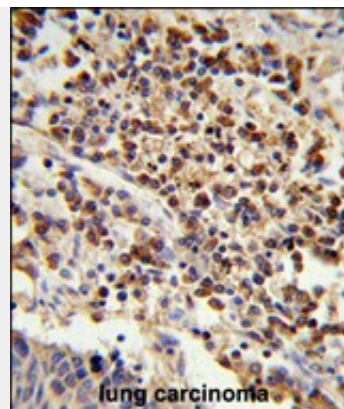
Cellular Location

Nucleus. Nucleus speckle

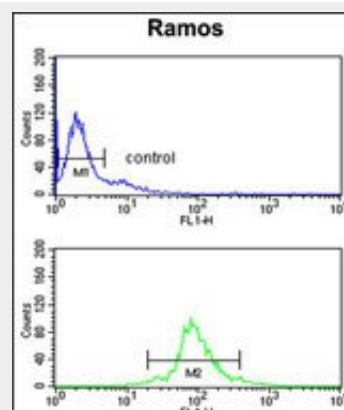
U2AF1 Antibody (Center Y114) - Protocols

Provided below are standard protocols that you may find useful for product applications.

- [Western Blot](#)
- [Blocking Peptides](#)
- [Dot Blot](#)
- [Immunohistochemistry](#)
- [Immunofluorescence](#)
- [Immunoprecipitation](#)
- [Flow Cytometry](#)
- [Cell Culture](#)



Formalin-fixed and paraffin-embedded human lung carcinoma reacted with U2AF1 Antibody (Center Y114) (Cat. #AP2802d), which was peroxidase-conjugated to the secondary antibody, followed by DAB staining. This data demonstrates the use of this antibody for immunohistochemistry; clinical relevance has not been evaluated.



U2AF1 Antibody (Center Y114) (Cat. #AP2802d) flow cytometry analysis of Ramos cells (bottom histogram) compared to a negative control cell (top histogram). FITC-conjugated goat-anti-rabbit secondary antibodies were used for the analysis.

U2AF1 Antibody (Center Y114) - Background

U2AF1 belongs to the splicing factor SR family. U2 auxiliary factor, comprising a large and a small subunit, is a non-snRNP protein required for the binding of U2 snRNP to the pre-mRNA branch site. This gene encodes the small subunit which plays a critical role in both constitutive and enhancer-dependent RNA splicing by directly mediating interactions between the large subunit and proteins bound

to the enhancers.

**U2AF1 Antibody (Center Y114) -
References**

Rino,J., Mol. Cell. Biol. 28 (9), 3045-3057
(2008) Little,J.T., J. Biol. Chem. 283 (13),
8145-8152 (2008) Pacheco,T.R., Mol. Cell. Biol.
26 (21), 8183-8190 (2006)