

**CCNB2 Antibody (Center)**  
**Purified Rabbit Polyclonal Antibody (Pab)**  
**Catalog # AP2851c**

**Specification**

**CCNB2 Antibody (Center) - Product Information**

Application	WB,E
Primary Accession	<a href="#">Q95067</a>
Other Accession	<a href="#">Q4R7A8</a>
Reactivity	Human
Predicted	Monkey
Host	Rabbit
Clonality	Polyclonal
Isotype	Rabbit Ig
Calculated MW	45282
Antigen Region	101-128

**CCNB2 Antibody (Center) - Additional Information**

**Gene ID** 9133

**Other Names**

G2/mitotic-specific cyclin-B2, CCNB2

**Target/Specificity**

This CCNB2 antibody is generated from rabbits immunized with a KLH conjugated synthetic peptide between 101-128 amino acids from the Central region of human CCNB2.

**Dilution**

WB~~1:1000

**Format**

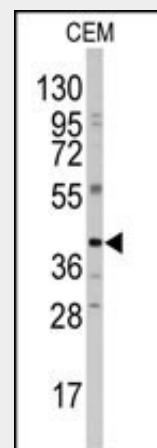
Purified polyclonal antibody supplied in PBS with 0.09% (W/V) sodium azide. This antibody is prepared by Saturated Ammonium Sulfate (SAS) precipitation followed by dialysis against PBS.

**Storage**

Maintain refrigerated at 2-8°C for up to 2 weeks. For long term storage store at -20°C in small aliquots to prevent freeze-thaw cycles.

**Precautions**

CCNB2 Antibody (Center) is for research use only and not for use in diagnostic or therapeutic procedures.



Western blot analysis of anti-CCNB2 Antibody (Center) (Cat.#AP2851c) in CEM cell line lysates (35ug/lane). CCNB2(arrow) was detected using the purified Pab.

**CCNB2 Antibody (Center) - Background**

Cyclin B2 is a member of the cyclin family, specifically the B-type cyclins. The B-type cyclins, B1 and B2, associate with p34cdc2 and are essential components of the cell cycle regulatory machinery. B1 and B2 differ in their subcellular localization. Cyclin B1 co-localizes with microtubules, whereas cyclin B2 is primarily associated with the Golgi region. Cyclin B2 also binds to transforming growth factor beta RII and thus cyclin B2/cdc2 may play a key role in transforming growth factor beta-mediated cell cycle control.

**CCNB2 Antibody (Center) - References**

- De Martino,I., Cancer Res. 69 (5), 1844-1850 (2009)
- Bellanger,S., Oncogene 26 (51), 7175-7184 (2007)

**CCNB2 Antibody (Center) - Protein Information****Name** CCNB2**Function**

Essential for the control of the cell cycle at the G2/M (mitosis) transition.

**CCNB2 Antibody (Center) - Protocols**

Provided below are standard protocols that you may find useful for product applications.

- [Western Blot](#)
- [Blocking Peptides](#)
- [Dot Blot](#)
- [Immunohistochemistry](#)
- [Immunofluorescence](#)
- [Immunoprecipitation](#)
- [Flow Cytometry](#)
- [Cell Culture](#)