

HSPD1 Antibody (C-term)

Purified Rabbit Polyclonal Antibody (Pab)

Catalog # AP2859b

Specification

HSPD1 Antibody (C-term) - Product Information

Application	WB, IHC-P, FC,E
Primary Accession	P10809
Other Accession	P63039 , P63038 , P18687 , Q5ZL72 , P31081
Reactivity Predicted	Human, Mouse Bovine, Chicken, Hamster, Rat
Host	Rabbit
Clonality	Polyclonal
Isotype	Rabbit Ig
Calculated MW	61055
Antigen Region	396-423

HSPD1 Antibody (C-term) - Additional Information

Gene ID 3329

Other Names

60 kDa heat shock protein, mitochondrial, 60 kDa chaperonin, Chaperonin 60, CPN60, Heat shock protein 60, HSP-60, Hsp60, HuCHA60, Mitochondrial matrix protein P1, P60 lymphocyte protein, HSPD1, HSP60

Target/Specificity

This HSPD1 antibody is generated from rabbits immunized with a KLH conjugated synthetic peptide between 396-423 amino acids from the C-terminal region of human HSPD1.

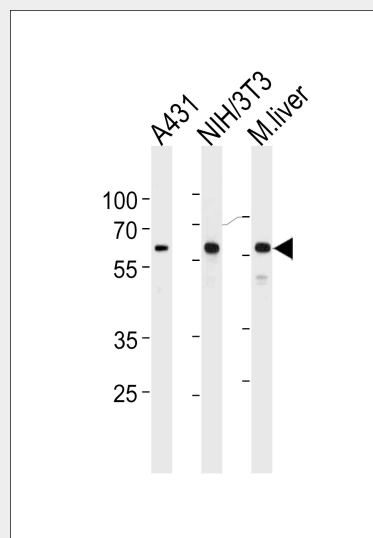
Dilution

WB~~1:1000
IHC-P~~1:50~100
FC~~1:10~50

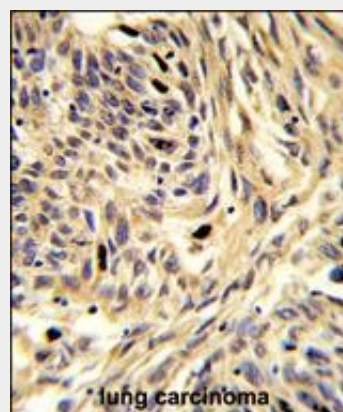
Format

Purified polyclonal antibody supplied in PBS with 0.09% (W/V) sodium azide. This antibody is prepared by Saturated Ammonium Sulfate (SAS) precipitation followed by dialysis against PBS.

Storage



HSPD1 Antibody (C-term) (Cat. #AP2859b) western blot analysis in A431, mouse NIH/3T3 cell line and mouse liver tissue lysates (35ug/lane). This demonstrates the HSPD1 antibody detected the HSPD1 protein (arrow).



Formalin-fixed and paraffin-embedded human lung carcinoma reacted with HSPD1 Antibody (C-term), which was peroxidase-conjugated to the secondary antibody, followed by DAB staining. This data demonstrates the use of this antibody for immunohistochemistry; clinical relevance has not been evaluated.

Maintain refrigerated at 2-8°C for up to 2 weeks. For long term storage store at -20°C in small aliquots to prevent freeze-thaw cycles.

Precautions

HSPD1 Antibody (C-term) is for research use only and not for use in diagnostic or therapeutic procedures.

HSPD1 Antibody (C-term) - Protein Information

Name HSPD1

Synonyms HSP60

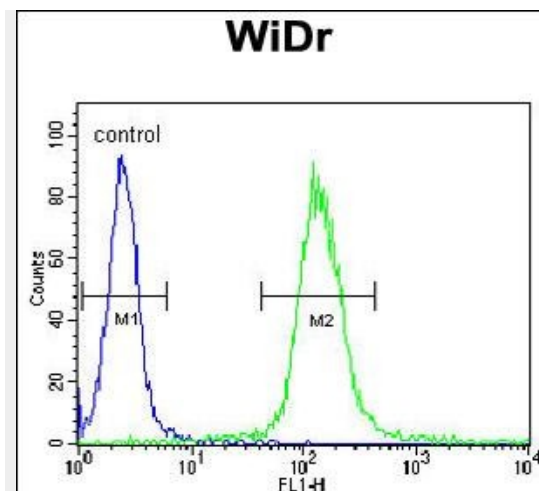
Function

Chaperonin implicated in mitochondrial protein import and macromolecular assembly. Together with Hsp10, facilitates the correct folding of imported proteins. May also prevent misfolding and promote the refolding and proper assembly of unfolded polypeptides generated under stress conditions in the mitochondrial matrix (PubMed:1346131, PubMed:11422376). The functional units of these chaperonins consist of heptameric rings of the large subunit Hsp60, which function as a back-to-back double ring. In a cyclic reaction, Hsp60 ring complexes bind one unfolded substrate protein per ring, followed by the binding of ATP and association with 2 heptameric rings of the co-chaperonin Hsp10. This leads to sequestration of the substrate protein in the inner cavity of Hsp60 where, for a certain period of time, it can fold undisturbed by other cell components. Synchronous hydrolysis of ATP in all Hsp60 subunits results in the dissociation of the chaperonin rings and the release of ADP and the folded substrate protein (Probable).

Cellular Location

Mitochondrion matrix.

HSPD1 Antibody (C-term) - Protocols



HSPD1 Antibody (C-term) (Cat. #AP2859b) flow cytometric analysis of WiDr cells (right histogram) compared to a negative control cell (left histogram). FITC-conjugated goat-anti-rabbit secondary antibodies were used for the analysis.

HSPD1 Antibody (C-term) - Background

HSPD1 is a member of the chaperonin family. This protein may function as a signaling molecule in the innate immune system. The protein is essential for the folding and assembly of newly imported proteins in the mitochondria. The protein is adjacent to a related family member and the region between the 2 genes functions as a bidirectional promoter.

HSPD1 Antibody (C-term) - References

- Venner T.J., Singh B., Gupta R.S. DNA Cell Biol. 9:545-552(1990)
- Hansen J.J., Bross P., Westergaard M., Nielsen M.N., Eiberg H., Hum. Genet. 112:71-77(2003)
- Rasmussen R.K., Ji H., Eddes J.S., Moritz R.L., Electrophoresis 18:588-598(1997)
- Aboulaich N., Vainonen J.P., Stralfors P., Vener A.V. Biochem. J. 383:237-248(2004)

Provided below are standard protocols that you may find useful for product applications.

- [Western Blot](#)
- [Blocking Peptides](#)
- [Dot Blot](#)
- [Immunohistochemistry](#)
- [Immunofluorescence](#)
- [Immunoprecipitation](#)
- [Flow Cytometry](#)
- [Cell Culture](#)

HSPD1 Antibody (C-term) - Citations

- [Proteomic study on neurite responses to oxidative stress: search for differentially expressed proteins in isolated neurites of N1E-115 cells.](#)