

RFC3 Antibody (Center)
Purified Rabbit Polyclonal Antibody (Pab)
Catalog # AP2860c

Specification

RFC3 Antibody (Center) - Product Information

Application	WB, FC,E
Primary Accession	P40938
Other Accession	Q8R323 , Q2TBV1
Reactivity	Human
Predicted	Bovine, Mouse
Host	Rabbit
Clonality	Polyclonal
Isotype	Rabbit Ig
Calculated MW	40556
Antigen Region	121-150

RFC3 Antibody (Center) - Additional Information

Gene ID 5983

Other Names

Replication factor C subunit 3, Activator 1
38 kDa subunit, A1 38 kDa subunit,
Activator 1 subunit 3, Replication factor C
38 kDa subunit, RF-C 38 kDa subunit,
RFC38, RFC3

Target/Specificity

This RFC3 antibody is generated from rabbits immunized with a KLH conjugated synthetic peptide between 121-150 amino acids from the Central region of human RFC3.

Dilution

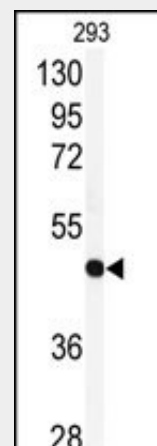
WB~~1:1000
FC~~1:10~50

Format

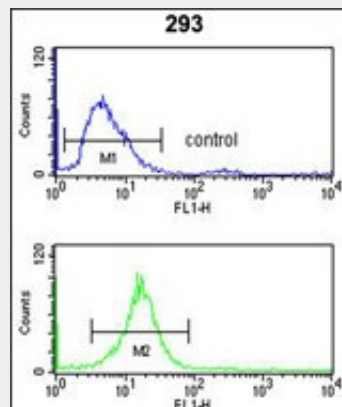
Purified polyclonal antibody supplied in PBS with 0.09% (W/V) sodium azide. This antibody is prepared by Saturated Ammonium Sulfate (SAS) precipitation followed by dialysis against PBS.

Storage

Maintain refrigerated at 2-8°C for up to 2 weeks. For long term storage store at -20°C in small aliquots to prevent freeze-thaw cycles.



Western blot analysis of anti-RFC3 Antibody (Center) (Cat.#AP2860c) in 293 cell line lysates (35ug/lane). RFC3 (arrow) was detected using the purified Pab.



RFC3 Antibody (Center) (Cat. #AP2860c) flow cytometry analysis of 293 cells (bottom histogram) compared to a negative control cell (top histogram). FITC-conjugated goat-anti-rabbit secondary antibodies were used for the analysis.

RFC3 Antibody (Center) - Background

The elongation of primed DNA templates by DNA polymerase delta and DNA polymerase epsilon requires the accessory proteins proliferating cell nuclear antigen (PCNA) and

Precautions

RFC3 Antibody (Center) is for research use only and not for use in diagnostic or therapeutic procedures.

replication factor C (RFC). RFC, also named activator 1, is a protein complex consisting of five distinct subunits of 140, 40, 38, 37, and 36 kDa.

RFC3 Antibody (Center) - Protein Information

Name RFC3

Function

The elongation of primed DNA templates by DNA polymerase delta and epsilon requires the action of the accessory proteins proliferating cell nuclear antigen (PCNA) and activator 1.

Cellular Location

Nucleus.

RFC3 Antibody (Center) - References

Rauen M., Burtelow M.A.J. Biol. Chem. 275:29767-29771(2000)

RFC3 Antibody (Center) - Protocols

Provided below are standard protocols that you may find useful for product applications.

- [Western Blot](#)
- [Blocking Peptides](#)
- [Dot Blot](#)
- [Immunohistochemistry](#)
- [Immunofluorescence](#)
- [Immunoprecipitation](#)
- [Flow Cytometry](#)
- [Cell Culture](#)