

Phospho-BAR2(S261) Antibody
Affinity Purified Rabbit Polyclonal Antibody (Pab)
Catalog # AP3548a

Specification

Phospho-BAR2(S261) Antibody - Product Information

Application	DB,E
Primary Accession	P07550
Other Accession	NP_000015
Reactivity	Human
Host	Rabbit
Clonality	Polyclonal
Isotype	Rabbit Ig
Calculated MW	46459

Phospho-BAR2(S261) Antibody - Additional Information

Gene ID 154

Other Names

Beta-2 adrenergic receptor, Beta-2 adrenoreceptor, Beta-2 adrenoceptor, ADRB2, ADRB2R, B2AR

Target/Specificity

This BAR2 Antibody is generated from rabbits immunized with a KLH conjugated synthetic phosphopeptide corresponding to amino acid residues surrounding S261 of human BAR2.

Dilution

DB~~1:500

Format

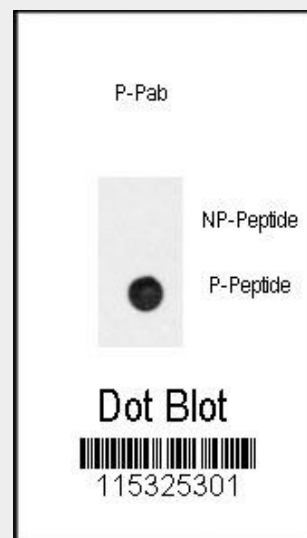
Purified polyclonal antibody supplied in PBS with 0.09% (W/V) sodium azide. This antibody is purified through a protein A column, followed by peptide affinity purification.

Storage

Maintain refrigerated at 2-8°C for up to 2 weeks. For long term storage store at -20°C in small aliquots to prevent freeze-thaw cycles.

Precautions

Phospho-BAR2(S261) Antibody is for



Dot blot analysis of anti-Phospho-BAR2-pS261 Antibody (Cat.#AP3548a) on nitrocellulose membrane. 50ng of Phospho-peptide or Non Phospho-peptide per dot were adsorbed. Antibody working concentrations are 0.5ug per ml.

Phospho-BAR2(S261) Antibody - Background

Beta-2-adrenergic receptor is a member of the G protein-coupled receptor superfamily. This receptor is directly associated with one of its ultimate effectors, the class C L-type calcium channel Ca(V)1.2. This receptor-channel complex also contains a G protein, an adenylyl cyclase, cAMP-dependent kinase, and the counterbalancing phosphatase, PP2A. The assembly of the signaling complex provides a mechanism that ensures specific and rapid signaling by this G protein-coupled receptor.

Phospho-BAR2(S261) Antibody - References

Wolfarth,B., Metab. Clin. Exp. 56 (12), 1649-1651 (2007)

research use only and not for use in
diagnostic or therapeutic procedures.

Cherezov,V., Science 318 (5854), 1258-1265
(2007)

Phospho-BAR2(S261) Antibody - Protein Information

Name ADRB2

Synonyms ADRB2R, B2AR

Function

Beta-adrenergic receptors mediate the catecholamine-induced activation of adenylate cyclase through the action of G proteins. The beta-2-adrenergic receptor binds epinephrine with an approximately 30- fold greater affinity than it does norepinephrine.

Cellular Location

Cell membrane; Multi-pass membrane protein. Early endosome. Golgi apparatus. Note=Colocalizes with VHL at the cell membrane (PubMed:19584355). Activated receptors are internalized into endosomes prior to their degradation in lysosomes (PubMed:20559325) Activated receptors are also detected within the Golgi apparatus (PubMed:27481942).

Phospho-BAR2(S261) Antibody - Protocols

Provided below are standard protocols that you may find useful for product applications.

- [Western Blot](#)
- [Blocking Peptides](#)
- [Dot Blot](#)
- [Immunohistochemistry](#)
- [Immunofluorescence](#)
- [Immunoprecipitation](#)
- [Flow Cytometry](#)
- [Cell Culture](#)