

Phospho-NOMO1(S1205) Antibody
Affinity Purified Rabbit Polyclonal Antibody (Pab)
Catalog # AP3565a

Specification

Phospho-NOMO1(S1205) Antibody - Product Information

Application	DB,E
Primary Accession	Q15155
Other Accession	P69849 , Q5JPE7
Reactivity	Human
Host	Rabbit
Clonality	Polyclonal
Isotype	Rabbit Ig
Calculated MW	134324

Phospho-NOMO1(S1205) Antibody - Additional Information

Gene ID 23420

Other Names

Nodal modulator 1, pM5 protein, NOMO1, PM5

Target/Specificity

This NOMO1 Antibody is generated from rabbits immunized with a KLH conjugated synthetic phosphopeptide corresponding to amino acid residues surrounding S1205 of human NOMO1.

Dilution

DB~~1:500

Format

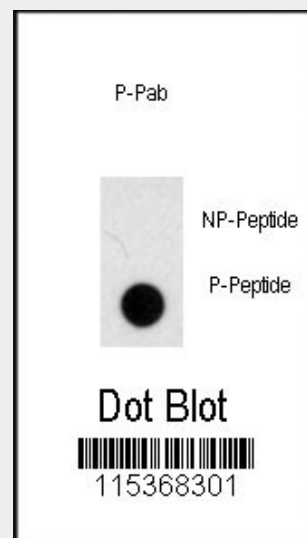
Purified polyclonal antibody supplied in PBS with 0.09% (W/V) sodium azide. This antibody is purified through a protein A column, followed by peptide affinity purification.

Storage

Maintain refrigerated at 2-8°C for up to 2 weeks. For long term storage store at -20°C in small aliquots to prevent freeze-thaw cycles.

Precautions

Phospho-NOMO1(S1205) Antibody is for research use only and not for use in



Dot blot analysis of anti-Phospho-NOMO1-pS1205 Antibody (Cat.#AP3565a) on nitrocellulose membrane. 50ng of Phospho-peptide or Non Phospho-peptide per dot were adsorbed. Antibody working concentrations are 0.5ug per ml.

Phospho-NOMO1(S1205) Antibody - Background

NOMO1 was originally thought to be related to the collagenase family. The gene encoding NOMO1 is one of three highly similar genes in a region of duplication located on the p arm of chromosome 16. These three genes encode closely related proteins that may have the same function. The protein encoded by one of these genes has been identified as part of a protein complex that participates in the Nodal signaling pathway during vertebrate development.

Phospho-NOMO1(S1205) Antibody - References

Blackshaw,S., PLoS Biol. 2 (9), E247 (2004)

diagnostic or therapeutic procedures.

Phospho-NOMO1(S1205) Antibody - Protein Information

Name NOMO1

Synonyms PM5

Function

Component of a ribosome-associated endoplasmic reticulum (ER) translocon complex involved in multi-pass membrane protein transport into the ER membrane and biogenesis (PubMed:32820719). May antagonize Nodal signaling and subsequent organization of axial structures during mesodermal patterning, via its interaction with NCLN/Nicalin (By similarity).

Cellular Location

Endoplasmic reticulum membrane;
Single-pass membrane protein

Tissue Location

Expressed in colon tumor tissue and in adjacent normal colonic mucosa.

Phospho-NOMO1(S1205) Antibody - Protocols

Provided below are standard protocols that you may find useful for product applications.

- [Western Blot](#)
- [Blocking Peptides](#)
- [Dot Blot](#)
- [Immunohistochemistry](#)
- [Immunofluorescence](#)
- [Immunoprecipitation](#)
- [Flow Cytometry](#)
- [Cell Culture](#)