

Phospho-ENT1(Slc29a1)(S254) Antibody
Affinity Purified Rabbit Polyclonal Antibody (Pab)
Catalog # AP3615a

Specification

Phospho-ENT1(Slc29a1)(S254) Antibody - Product Information

Application	DB,E
Primary Accession	Q99808
Reactivity	Human
Host	Rabbit
Clonality	Polyclonal
Isotype	Rabbit Ig
Calculated MW	50219

Phospho-ENT1(Slc29a1)(S254) Antibody - Additional Information

Gene ID 2030

Other Names

Equilibrative nucleoside transporter 1, Equilibrative nitrobenzylmercaptapurine riboside-sensitive nucleoside transporter, Equilibrative NBMPR-sensitive nucleoside transporter, Nucleoside transporter, es-type, Solute carrier family 29 member 1, SLC29A1, ENT1

Target/Specificity

This ENT1(Slc29a1) Antibody is generated from rabbits immunized with a KLH conjugated synthetic phosphopeptide corresponding to amino acid residues surrounding S254 of human ENT1(Slc29a1).

Dilution

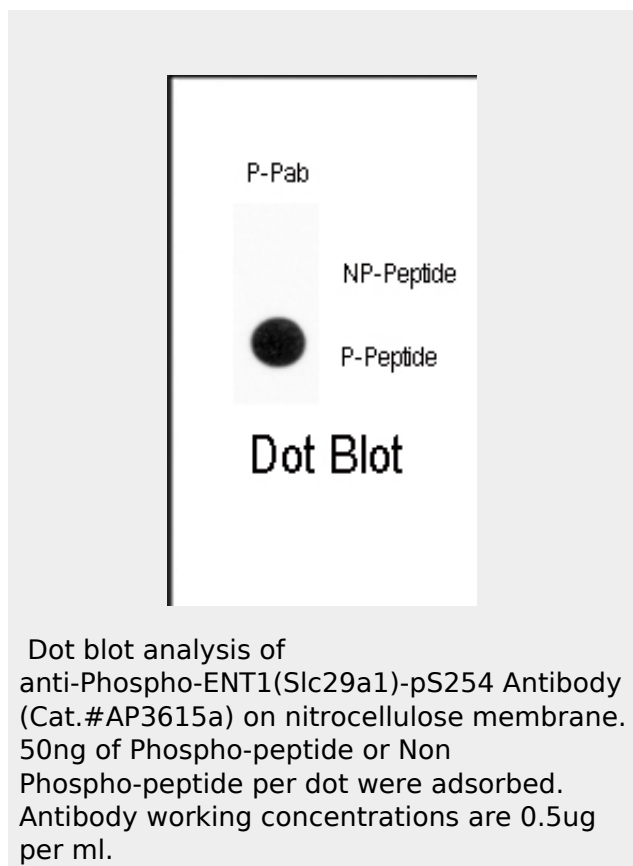
DB~~1:500

Format

Purified polyclonal antibody supplied in PBS with 0.09% (W/V) sodium azide. This antibody is purified through a protein A column, followed by peptide affinity purification.

Storage

Maintain refrigerated at 2-8°C for up to 2 weeks. For long term storage store at -20°C in small aliquots to prevent freeze-thaw cycles.



Phospho-ENT1(Slc29a1)(S254) Antibody - Background

ENT1 is a member of the equilibrative nucleoside transporter family. The protein is categorized as an equilibrative (as opposed to concentrative) transporter that is sensitive to inhibition by nitrobenzylthioinosine (NBMPR). Nucleoside transporters are required for nucleotide synthesis in cells that lack de novo nucleoside synthesis pathways, and are also necessary for the uptake of cytotoxic nucleosides used for cancer and viral chemotherapies.

Phospho-ENT1(Slc29a1)(S254) Antibody - References

Dephoure N, et al. (2008) Proc Natl Acad Sci U S A 105, 10762-7

Precautions

Phospho-ENT1(Slc29a1)(S254) Antibody is for research use only and not for use in diagnostic or therapeutic procedures.

Bone DB, Robillard KR, Stolk M, Hammond JR (2007) Mol Membr Biol 24, 294-303

Phospho-ENT1(Slc29a1)(S254) Antibody - Protein Information

Name SLC29A1

Synonyms ENT1

Function

Mediates both influx and efflux of nucleosides across the membrane (equilibrative transporter). It is sensitive (ES) to low concentrations of the inhibitor nitrobenzylmercaptapurine riboside (NBMPR) and is sodium-independent. It has a higher affinity for adenosine. Inhibited by dipyridamole and dilazep (anticancer chemotherapeutics drugs).

Cellular Location

Basolateral cell membrane; Multi-pass membrane protein. Apical cell membrane; Multi-pass membrane protein. Cell membrane; Multi-pass membrane protein. Note=Predominantly localized in the basolateral membrane in polarized MDCK cells

Tissue Location

Detected in erythrocytes (at protein level). Expressed in heart, brain, mammary gland, erythrocytes and placenta, and also in fetal liver and spleen.

Phospho-ENT1(Slc29a1)(S254) Antibody - Protocols

Provided below are standard protocols that you may find useful for product applications.

- [Western Blot](#)
- [Blocking Peptides](#)
- [Dot Blot](#)
- [Immunohistochemistry](#)
- [Immunofluorescence](#)
- [Immunoprecipitation](#)
- [Flow Cytometry](#)
- [Cell Culture](#)