

Phospho-CCND3(T283) Antibody
Affinity Purified Rabbit Polyclonal Antibody (Pab)
Catalog # AP3870a

Specification

Phospho-CCND3(T283) Antibody - Product Information

Application	DB,E
Primary Accession	P30281
Other Accession	P48961 , P30282 , Q3MHH5 , NP_001129489.1
Reactivity Predicted	Human Bovine, Mouse, Rat
Host	Rabbit
Clonality	Polyclonal
Isotype	Rabbit Ig
Calculated MW	32520

Phospho-CCND3(T283) Antibody - Additional Information

Gene ID 896

Other Names

G1/S-specific cyclin-D3, CCND3

Target/Specificity

This CCND3 Antibody is generated from rabbits immunized with a KLH conjugated synthetic phosphopeptide corresponding to amino acid residues surrounding T283 of human CCND3.

Dilution

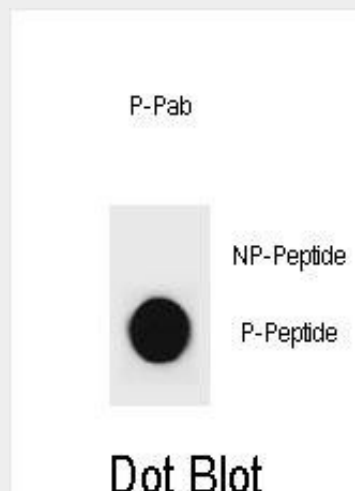
DB~~1:500

Format

Purified polyclonal antibody supplied in PBS with 0.09% (W/V) sodium azide. This antibody is purified through a protein A column, followed by peptide affinity purification.

Storage

Maintain refrigerated at 2-8°C for up to 2 weeks. For long term storage store at -20°C in small aliquots to prevent freeze-thaw cycles.



Dot blot analysis of CCND3 Antibody (Phospho T283) Phospho-specific Pab (Cat. #AP3870a) on nitrocellulose membrane. 50ng of Phospho-peptide or Non Phospho-peptide per dot were adsorbed. Antibody working concentrations are 0.6ug per ml.

Phospho-CCND3(T283) Antibody - Background

The protein encoded by this gene belongs to the highly conserved cyclin family, whose members are characterized by a dramatic periodicity in protein abundance through the cell cycle. Cyclins function as regulators of CDK kinases. Different cyclins exhibit distinct expression and degradation patterns which contribute to the temporal coordination of each mitotic event. This cyclin forms a complex with and functions as a regulatory subunit of CDK4 or CDK6, whose activity is required for cell cycle G1/S transition. This protein has been shown to interact with and be

Precautions

Phospho-CCND3(T283) Antibody is for research use only and not for use in diagnostic or therapeutic procedures.

Phospho-CCND3(T283) Antibody - Protein Information

Name CCND3

Function

Regulatory component of the cyclin D3-CDK4 (DC) complex that phosphorylates and inhibits members of the retinoblastoma (RB) protein family including RB1 and regulates the cell-cycle during G(1)/S transition. Phosphorylation of RB1 allows dissociation of the transcription factor E2F from the RB/E2F complex and the subsequent transcription of E2F target genes which are responsible for the progression through the G(1) phase. Hypophosphorylates RB1 in early G(1) phase. Cyclin D-CDK4 complexes are major integrators of various mitogenenic and antimitogenic signals. Also substrate for SMAD3, phosphorylating SMAD3 in a cell-cycle-dependent manner and repressing its transcriptional activity. Component of the ternary complex, cyclin D3/CDK4/CDKN1B, required for nuclear translocation and activity of the cyclin D-CDK4 complex.

Cellular Location

Nucleus. Cytoplasm. Membrane
Note=Cyclin D-CDK4 complexes accumulate at the nuclear membrane and are then translocated to the nucleus through interaction with KIP/CIP family members.

involved in the phosphorylation of tumor suppressor protein Rb. The CDK4 activity associated with this cyclin was reported to be necessary for cell cycle progression through G2 phase into mitosis after UV radiation. Several transcript variants encoding different isoforms have been found for this gene.

Phospho-CCND3(T283) Antibody - References

Liu, C.Y., et al. Carcinogenesis 31(7):1259-1263(2010)
Kim, J., et al. Cytokine 50(1):42-49(2010)
Kamatani, Y., et al. Nat. Genet. 42(3):210-215(2010)
Gumina, M.R., et al. Cell Cycle 9(4):820-828(2010)
Radulovich, N., et al. Mol. Cancer 9, 24 (2010) :

Phospho-CCND3(T283) Antibody - Protocols

Provided below are standard protocols that you may find useful for product applications.

- [Western Blot](#)
- [Blocking Peptides](#)
- [Dot Blot](#)
- [Immunohistochemistry](#)
- [Immunofluorescence](#)
- [Immunoprecipitation](#)

- [Flow Cytometry](#)
- [Cell Culture](#)