

EREG Antibody (C-term)
Affinity Purified Rabbit Polyclonal Antibody (Pab)
Catalog # AP4798b

Specification

EREG Antibody (C-term) - Product Information

Application	WB, IHC-P,E
Primary Accession	O14944
Reactivity	Human
Host	Rabbit
Clonality	Polyclonal
Isotype	Rabbit Ig
Antigen Region	137-165

EREG Antibody (C-term) - Additional Information

Gene ID 2069

Other Names

Proepiregulin, Epiregulin, EPR, EREG

Target/Specificity

This EREG antibody is generated from rabbits immunized with a KLH conjugated synthetic peptide between 137-165 amino acids from the C-terminal region of human EREG.

Dilution

WB~~1:1000

IHC-P~~1:10~50

Format

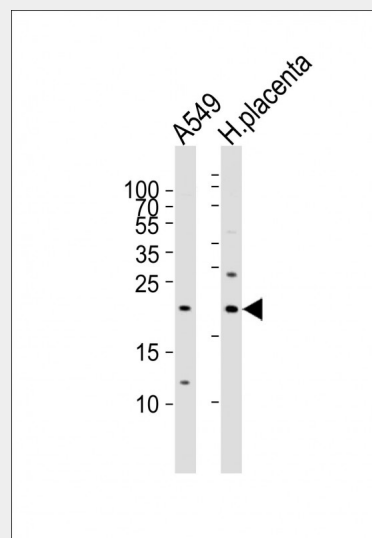
Purified polyclonal antibody supplied in PBS with 0.09% (W/V) sodium azide. This antibody is purified through a protein A column, followed by peptide affinity purification.

Storage

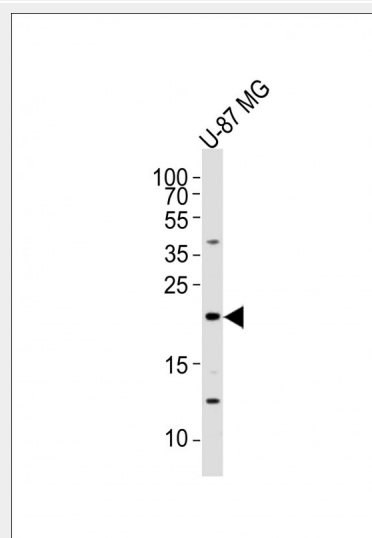
Maintain refrigerated at 2-8°C for up to 2 weeks. For long term storage store at -20°C in small aliquots to prevent freeze-thaw cycles.

Precautions

EREG Antibody (C-term) is for research use only and not for use in diagnostic or therapeutic procedures.



All lanes : Anti-EREG Antibody (C-term) at 1:1000 dilution
Lane 1: A549 whole cell lysates
Lane 2: human placenta lysates/proteins at 20 µg per lane.
Secondary Goat Anti-Rabbit IgG, (H+L), Peroxidase conjugated at 1/10000 dilution
Predicted band size : 19 kDa
Blocking/Dilution buffer: 5% NFDM/TBST.



Anti-EREG Antibody (C-term) at 1:2000 dilution + U-87 MG whole cell lysates
Lysates/proteins at 20 µg per lane.

EREG Antibody (C-term) - Protein Information

Name EREG

Function

Ligand of the EGF receptor/EGFR and ERBB4. Stimulates EGFR and ERBB4 tyrosine phosphorylation (PubMed:9419975). Contributes to inflammation, wound healing, tissue repair, and oocyte maturation by regulating angiogenesis and vascular remodeling and by stimulating cell proliferation (PubMed:24631357).

Cellular Location

[Epiregulin]: Secreted, extracellular space

Tissue Location

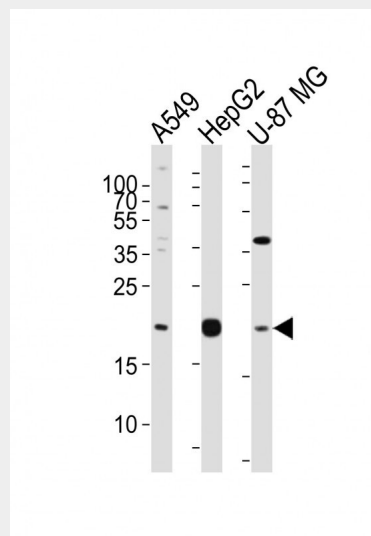
In normal adults, expressed predominantly in the placenta and peripheral blood leukocytes. High levels were detected in carcinomas of the bladder, lung, kidney and colon

EREG Antibody (C-term) - Protocols

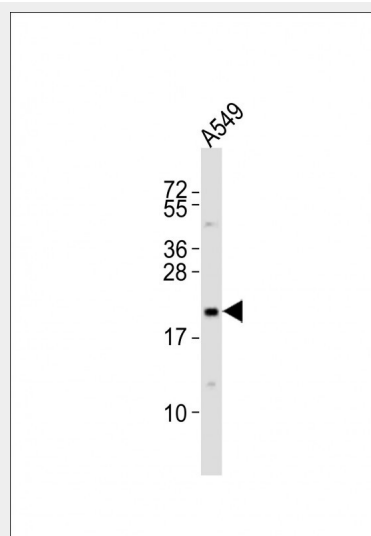
Provided below are standard protocols that you may find useful for product applications.

- [Western Blot](#)
- [Blocking Peptides](#)
- [Dot Blot](#)
- [Immunohistochemistry](#)
- [Immunofluorescence](#)
- [Immunoprecipitation](#)
- [Flow Cytometry](#)
- [Cell Culture](#)

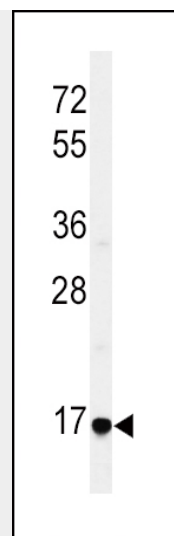
Secondary Goat Anti-Rabbit IgG, (H+L), Peroxidase conjugated at 1/10000 dilution
Predicted band size : 19 kDa
Blocking/Dilution buffer: 5% NFDM/TBST.



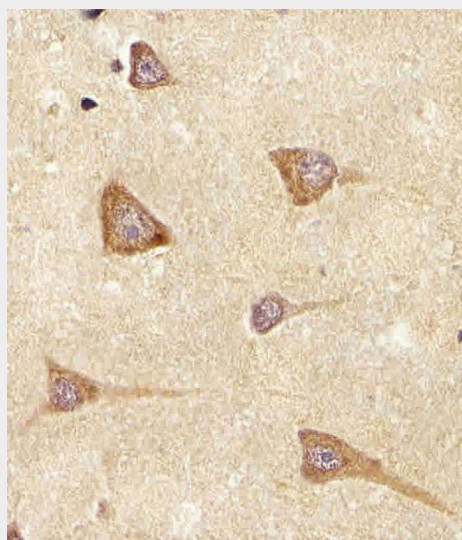
Western blot analysis of lysates from A549, HepG2, U-87 MG cell line (from left to right), using EREG Antibody (C-term)(Cat. #AP4798b). AP4798b was diluted at 1:1000 at each lane. A goat anti-rabbit IgG H&L(HRP) at 1:10000 dilution was used as the secondary antibody. Lysates at 20ug per lane.



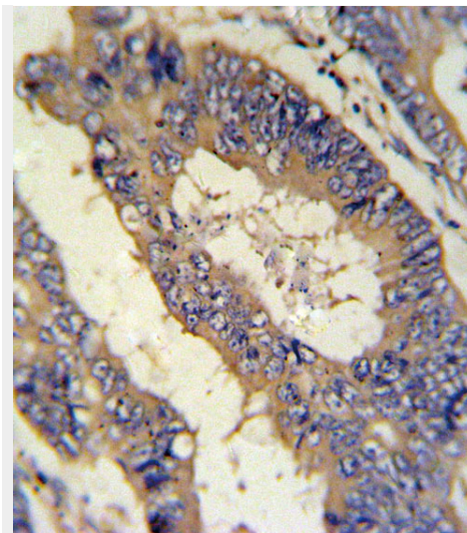
Anti-EREG Antibody (C-term)at 1:2000 dilution + A549 whole cell lysates
Lysates/proteins at 20 µg per lane.
Secondary Goat Anti-Rabbit IgG, (H+L), Peroxidase conjugated at 1/10000 dilution
Predicted band size : 19 kDa
Blocking/Dilution buffer: 5% NFDM/TBST.



Western blot analysis of EREG Antibody (C-term) (Cat. #AP4798b) in HepG2 cell line lysates (35ug/lane). EREG (arrow) was detected using the purified Pab.



AP4798b staining EREG in Human brain tissue sections by Immunohistochemistry (IHC-P - paraformaldehyde-fixed, paraffin-embedded sections). Tissue was fixed with formaldehyde and blocked with 3% BSA for 0.5 hour at room temperature; antigen retrieval was by heat mediation with a citrate buffer (pH6). Samples were incubated with primary antibody (1/25) for 1 hour at 37°C. A undiluted biotinylated goat polyvalent antibody was used as the secondary antibody.



EREG Antibody (C-term) (Cat. #AP4798b)
IHC analysis in formalin fixed and paraffin embedded colon carcinoma followed by peroxidase conjugation of the secondary antibody and DAB staining. This data demonstrates the use of the EREG Antibody (C-term) for immunohistochemistry. Clinical relevance has not been evaluated.

EREG Antibody (C-term) - Background

EREG is a member of the epidermal growth factor family. EREG can function as a ligand of EGFR (epidermal growth factor receptor), as well as a ligand of most members of the ERBB (v-erb-b2 oncogene homolog) family of tyrosine-kinase receptors.

EREG Antibody (C-term) - References

Ben-Ami, I., et al. Hum. Reprod. 24(1):176-184(2009)
Cho, M.C., et al. Biochem. Biophys. Res. Commun. 377(3):832-837(2008)
Lasky-Su, J., et al. Am. J. Med. Genet. B Neuropsychiatr. Genet. 147B (8), 1345-1354 (2008)