

**ERI1 Antibody**  
**Purified Rabbit Polyclonal Antibody (Pab)**  
**Catalog # AP50075**

**Specification**

**ERI1 Antibody - Product Information**

Application	<b>WB</b>
Primary Accession	<a href="#">Q8IV48</a>
Reactivity	<b>Human, Mouse, Rat</b>
Host	<b>Rabbit</b>
Clonality	<b>Polyclonal</b>
Calculated MW	<b>40 KDa</b>
Antigen Region	<b>276-305</b>

**ERI1 Antibody - Additional Information**

**Gene ID** 90459

**Other Names**

3'-5' exonuclease 1, 31--, 3'-5' exonuclease ERI1, Eri-1 homolog, Histone mRNA 3'-end-specific exonuclease, Histone mRNA 3'-exonuclease 1, Protein 3'hExo, HEXO, ERI1, 3'EXO, THEX1

**Dilution**

WB~~ 1:1000

**Format**

Rabbit IgG in phosphate buffered saline (without Mg<sup>2+</sup> and Ca<sup>2+</sup>), pH 7.4, 150mM NaCl, 0.09% (W/V) sodium azide and 50% glycerol.

**Storage Conditions**

-20°C

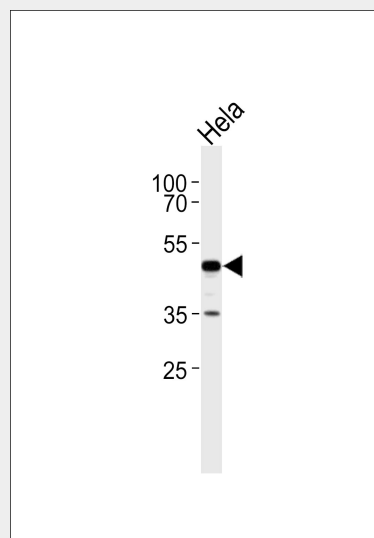
**ERI1 Antibody - Protein Information**

**Name** ERI1

**Synonyms** 3'EXO, THEX1

**Function**

RNA exonuclease that binds to the 3'-end of histone mRNAs and degrades them, suggesting that it plays an essential role in histone mRNA decay after replication. A 2'



Western blot analysis of lysate from HeLa cell line, using ERI1 Antibody (C21254). C21254 was diluted at 1:1000. A goat anti-rabbit IgG H&L (HRP) at 1:5000 dilution was used as the secondary antibody. Lysate at 35ug.

**ERI1 Antibody - Background**

RNA exonuclease that binds to the 3'-end of histone mRNAs and degrades them, suggesting that it plays an essential role in histone mRNA decay after replication. A 2' and 3'-hydroxyl groups at the last nucleotide of the histone 3'-end is required for efficient degradation of RNA substrates. Also able to degrade the 3'-overhangs of short interfering RNAs (siRNAs) in vitro, suggesting a possible role as regulator of RNA interference (RNAi). Requires for binding the 5'-ACCCA-3' sequence present in stem-loop structure. Able to bind other mRNAs. Required for 5.8S rRNA 3'-end processing. Also binds to 5.8s ribosomal RNA. Binds with high affinity to the stem-loop structure of replication-dependent histone pre-mRNAs.

**ERI1 Antibody - References**

Dominski Z., et al. Mol. Cell 12:295-305(2003).

and 3'-hydroxyl groups at the last nucleotide of the histone 3'-end is required for efficient degradation of RNA substrates. Also able to degrade the 3'-overhangs of short interfering RNAs (siRNAs) in vitro, suggesting a possible role as regulator of RNA interference (RNAi). Requires for binding the 5'- ACCCA-3' sequence present in stem-loop structure. Able to bind other mRNAs. Required for 5.8S rRNA 3'-end processing. Also binds to 5.8s ribosomal RNA. Binds with high affinity to the stem-loop structure of replication-dependent histone pre-mRNAs.

**Cellular Location**

Cytoplasm. Nucleus. Nucleus, nucleolus

Ota T.,et al.Nat. Genet. 36:40-45(2004).  
Bechtel S.,et al.BMC Genomics  
8:399-399(2007).  
Kennedy S.,et al.Nature 427:645-649(2004).  
Yang X.-C.,et al.J. Biol. Chem.  
281:30447-30454(2006).

**ERI1 Antibody - Protocols**

Provided below are standard protocols that you may find useful for product applications.

- [Western Blot](#)
- [Blocking Peptides](#)
- [Dot Blot](#)
- [Immunohistochemistry](#)
- [Immunofluorescence](#)
- [Immunoprecipitation](#)
- [Flow Cytometry](#)
- [Cell Culture](#)