

TTF2 Antibody
Purified Rabbit Polyclonal Antibody (Pab)
Catalog # AP50207

Specification

TTF2 Antibody - Product Information

Application	WB
Primary Accession	O00358
Reactivity	Human, Mouse, Rat
Host	Rabbit
Clonality	Polyclonal
Calculated MW	38 KDa
Antigen Region	2-32

TTF2 Antibody - Additional Information

Gene ID 2304

Other Names

Forkhead box protein E1, Forkhead box protein E2, Forkhead-related protein FKHL15, HFKH4, HNF-3/fork head-like protein 5, HFKL5, Thyroid transcription factor 2, TTF-2, FOXE1, FKHL15, FOXE2, TTF2, TTF2

Dilution

WB~~1:500-1:1000

Format

Rabbit IgG in phosphate buffered saline (without Mg²⁺ and Ca²⁺), pH 7.4, 150mM NaCl, 0.09% (W/V) sodium azide and 50% glycerol.

Storage Conditions

-20°C

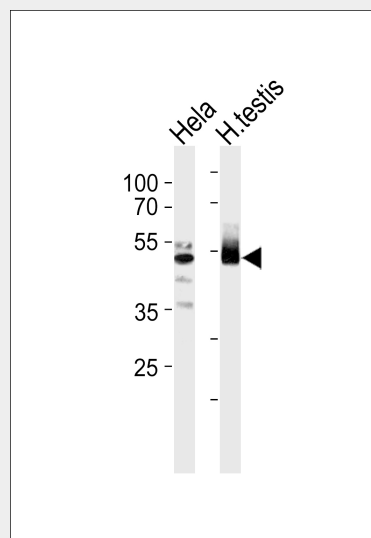
TTF2 Antibody - Protein Information

Name FOXE1

Synonyms FKHL15, FOXE2, TTF2, TTF2

Function

Transcription factor that binds consensus sites on a variety of gene promoters and activate their transcription. Involved in



Western blot analysis of lysates from HeLa cell line and human testis tissue lysate (from left to right), using TTF2 Antibody (C10022). C10022 was diluted at 1:1000 at each lane. A goat anti-rabbit IgG H&L (HRP) at 1:5000 dilution was used as the secondary antibody. Lysates at 35ug per lane.

TTF2 Antibody - Background

Probable transcription factor. Could be involved in thyroid gland organogenesis.

TTF2 Antibody - References

Wiese S., et al. DNA Cell Biol. 16:165-171(1997).
Chadwick B.P., et al. Genomics 41:390-396(1997).
Macchia P.E., et al. Biochimie 81:433-440(1999).
Humphray S.J., et al. Nature 429:369-374(2004).
Mural R.J., et al. Submitted (JUL-2005) to the EMBL/GenBank/DBJ databases.

proper palate formation, most probably through the expression of MSX1 and TGFB3 genes which are direct targets of this transcription factor. Also implicated in thyroid gland morphogenesis. May indirectly play a role in cell growth and migration through the regulation of WNT5A expression.

Cellular Location

Nucleus.

Tissue Location

Detected in adult brain, placenta, lung, liver, skeletal muscle, kidney, pancreas, heart, colon, small intestine testis and thymus. Expression was strongest in heart and pancreas

TTF2 Antibody - Protocols

Provided below are standard protocols that you may find useful for product applications.

- [Western Blot](#)
- [Blocking Peptides](#)
- [Dot Blot](#)
- [Immunohistochemistry](#)
- [Immunofluorescence](#)
- [Immunoprecipitation](#)
- [Flow Cytometry](#)
- [Cell Culture](#)