

CD80 Antibody (C-term)
Affinity Purified Rabbit Polyclonal Antibody (Pab)
Catalog # AP5020b

Specification

CD80 Antibody (C-term) - Product Information

Application	WB, FC,E
Primary Accession	P33681
Reactivity	Human
Host	Rabbit
Clonality	Polyclonal
Isotype	Rabbit Ig
Antigen Region	260-288

CD80 Antibody (C-term) - Additional Information

Gene ID 941

Other Names

T-lymphocyte activation antigen CD80,
Activation B7-1 antigen, BB1, CTLA-4
counter-receptor B71, B7, CD80, CD80,
CD28LG, CD28LG1, LAB7

Target/Specificity

This CD80 antibody is generated from rabbits immunized with a KLH conjugated synthetic peptide between 260-288 amino acids from the C-terminal region of human CD80.

Dilution

WB~~1:500-1000
FC~~1:10~50

Format

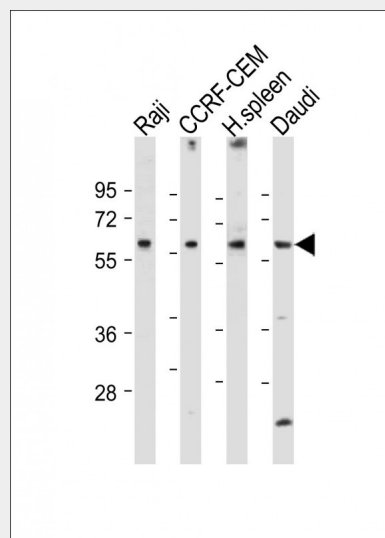
Purified polyclonal antibody supplied in PBS with 0.09% (W/V) sodium azide. This antibody is purified through a protein A column, followed by peptide affinity purification.

Storage

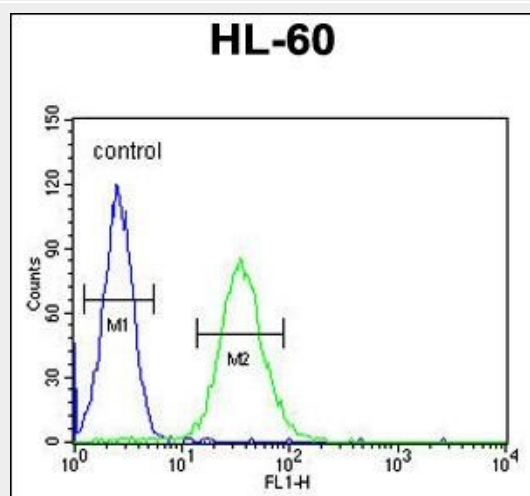
Maintain refrigerated at 2-8°C for up to 2 weeks. For long term storage store at -20°C in small aliquots to prevent freeze-thaw cycles.

Precautions

CD80 Antibody (C-term) is for research use only and not for use in diagnostic or



All lanes : Anti-CD80 Antibody (C-term) at 1:500-1000 dilution Lane 1: Raji whole cell lysate Lane 2: CCRF-CEM whole cell lysate Lane 3: Human spleen tissue lysate Lane 4: Daudi whole cell lysate Lysates/proteins at 20 µg per lane. Secondary Goat Anti-Rabbit IgG, (H+L), Peroxidase conjugated at 1/10000 dilution. Predicted band size : 33 kDa Blocking/Dilution buffer: 5% NFDM/TBST.



CD80 Antibody (C-term) (Cat. #AP5020b) flow cytometric analysis of HL-60 cells (right histogram) compared to a negative control cell (left histogram).FITC-conjugated

therapeutic procedures.

goat-anti-rabbit secondary antibodies were used for the analysis.

CD80 Antibody (C-term) - Protein Information

Name CD80

Synonyms CD28LG, CD28LG1, LAB7

Function

Involved in the costimulatory signal essential for T- lymphocyte activation. T-cell proliferation and cytokine production is induced by the binding of CD28, binding to CTLA-4 has opposite effects and inhibits T-cell activation.

Cellular Location

Membrane; Single-pass type I membrane protein.

Tissue Location

Expressed on activated B-cells, macrophages and dendritic cells

CD80 Antibody (C-term) - Background

CD80 is activation antigen B7-1 (formerly referred to as B7) provides regulatory signals for T lymphocytes as a consequence of binding to the CD28 (MIM 186760) and CTLA4 (MIM 123890) ligands of T cells.

CD80 Antibody (C-term) - References

Mosbruger, T.L., et al. J. Infect. Dis. 201(9):1371-1380(2010)
Dubois, P.C., et al. Nat. Genet. 42(4):295-302(2010)
Segat, L., et al. J. Gastroenterol. Hepatol. 24(12):1840-1846(2009)

CD80 Antibody (C-term) - Protocols

Provided below are standard protocols that you may find useful for product applications.

- [Western Blot](#)
- [Blocking Peptides](#)
- [Dot Blot](#)
- [Immunohistochemistry](#)
- [Immunofluorescence](#)
- [Immunoprecipitation](#)
- [Flow Cytometry](#)
- [Cell Culture](#)