

ALDH3A1 Antibody

Purified Rabbit Polyclonal Antibody (Pab)
Catalog # AP50971

Specification

ALDH3A1 Antibody - Product Information

Application	WB
Primary Accession	P30838
Reactivity	Human, Mouse, Rat
Host	Rabbit
Clonality	Polyclonal
Calculated MW	50 KDa
Antigen Region	231 - 290

ALDH3A1 Antibody - Additional Information

Gene ID 218

Other Names

Aldehyde dehydrogenase, dimeric NADP-preferring, ALDHIII, Aldehyde dehydrogenase 3, Aldehyde dehydrogenase family 3 member A1, ALDH3A1, ALDH3

Target/Specificity

KLH conjugated synthetic peptide derived from human ALDH3A1

Dilution

WB~~ 1:1000

Format

0.01M PBS, pH 7.2, 0.1% Sodium azide, Glycerol 50%

Storage

Store at -20 °C. Stable for 12 months from date of receipt

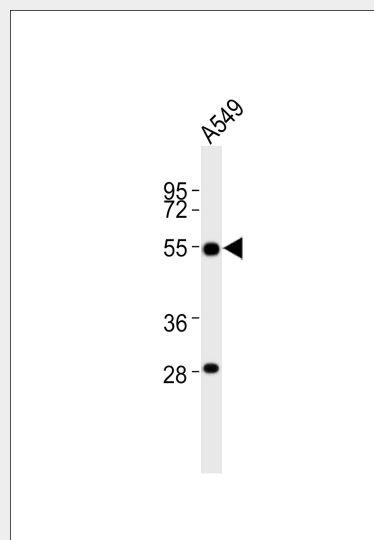
ALDH3A1 Antibody - Protein Information

Name ALDH3A1

Synonyms ALDH3

Function

ALDHs play a major role in the detoxification of alcohol- derived



Anti-ALDH3A1 Antibody at 1:1000 dilution + A549 whole cell lysates. Lysates/proteins at 20 µg per lane. Secondary Goat Anti-Rabbit IgG, (H+L), Peroxidase conjugated at 1/10000 dilution. Predicted band size : 50 kDa. Blocking/Dilution buffer: 5% NFDM/TBST.

ALDH3A1 Antibody - Background

ALDHs play a major role in the detoxification of alcohol-derived acetaldehyde. They are involved in the metabolism of corticosteroids, biogenic amines, neurotransmitters, and lipid peroxidation. This protein preferentially oxidizes aromatic aldehyde substrates. It may play a role in the oxidation of toxic aldehydes.

ALDH3A1 Antibody - References

Schuuring E.M.D., et al. Submitted (AUG-1991) to the EMBL/GenBank/DBJ databases.
Hsu L.C., et al. J. Biol. Chem. 267:3030-3037(1992).
Hsu L.C., et al. Adv. Exp. Med. Biol. 328:141-152(1993).
Kalline N., et al. Submitted (MAY-2003) to the EMBL/GenBank/DBJ databases.
Ota T., et al. Nat. Genet. 36:40-45(2004).

acetaldehyde (Probable). They are involved in the metabolism of corticosteroids, biogenic amines, neurotransmitters, and lipid peroxidation (Probable). Oxidizes medium and long chain aldehydes into non-toxic fatty acids (PubMed:1737758). Preferentially oxidizes aromatic aldehyde substrates (PubMed:1737758). Comprises about 50 percent of corneal epithelial soluble proteins (By similarity). May play a role in preventing corneal damage caused by ultraviolet light (By similarity).

Cellular Location

Cytoplasm

{ECO:0000250|UniProtKB:P47739}.

Tissue Location

High levels in stomach, esophagus and lung; low level in the liver and kidney

ALDH3A1 Antibody - Protocols

Provided below are standard protocols that you may find useful for product applications.

- [Western Blot](#)
- [Blocking Peptides](#)
- [Dot Blot](#)
- [Immunohistochemistry](#)
- [Immunofluorescence](#)
- [Immunoprecipitation](#)
- [Flow Cytometry](#)
- [Cell Culture](#)