

ARRDC1 Antibody
Purified Rabbit Polyclonal Antibody (Pab)
Catalog # AP50997

Specification

ARRDC1 Antibody - Product Information

Application	WB
Primary Accession	Q8N5I2
Reactivity	Human
Host	Rabbit
Clonality	Polyclonal
Calculated MW	46 KDa
Antigen Region	151 - 210

ARRDC1 Antibody - Additional Information

Gene ID 92714

Other Names

Arrestin domain-containing protein 1,
ARRDC1

Target/Specificity

KLH conjugated synthetic peptide derived
from human ARRDC1

Dilution

WB~~ 1:1000

Format

0.01M PBS, pH 7.2, 0.1% Sodium azide,
Glycerol 50%

Storage

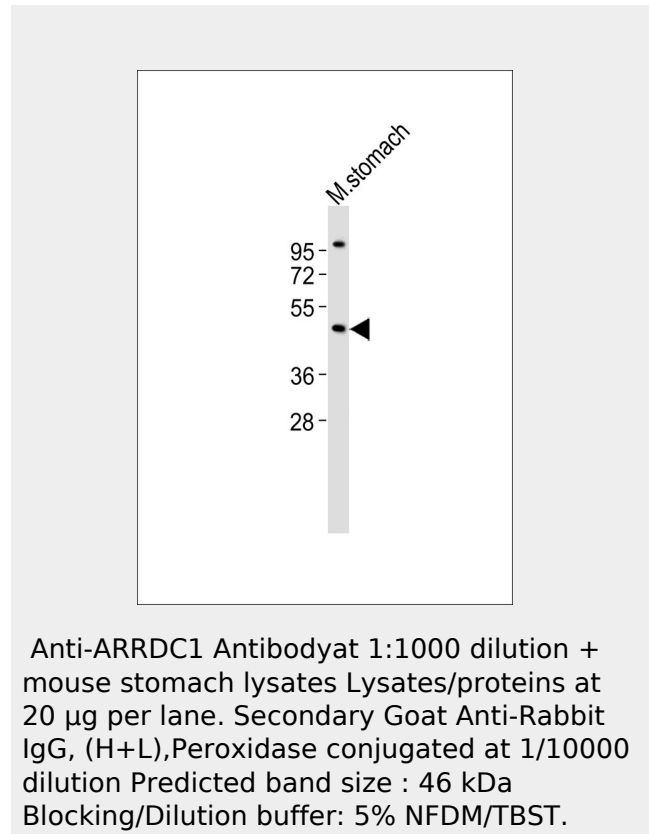
Store at -20 °C. Stable for 12 months from
date of receipt

ARRDC1 Antibody - Protein Information

Name ARRDC1 ([HGNC:28633](#))

Function

Functions as an adapter recruiting
ubiquitin-protein ligases to their specific
substrates (PubMed:23886940,
PubMed:27462458)



ARRDC1 Antibody - References

Humphray S.J., et al. Nature
429:369-374(2004).

target="_blank">27462458). Through an ubiquitination-dependent mechanism plays for instance a role in the incorporation of SLC11A2 into extracellular vesicles (PubMed:<a href="http://www.uniprot.org/citations/27462458"

target="_blank">27462458). More generally, plays a role in the extracellular transport of proteins between cells through the release in the extracellular space of microvesicles (PubMed:22315426). By participating in the ITCH-mediated ubiquitination and subsequent degradation of NOTCH1, negatively regulates the NOTCH signaling pathway (PubMed:23886940).

Cellular Location

Cell membrane. Note=Also found in extracellular vesicles different from exosomes.

ARRDC1 Antibody - Protocols

Provided below are standard protocols that you may find useful for product applications.

- [Western Blot](#)
- [Blocking Peptides](#)
- [Dot Blot](#)
- [Immunohistochemistry](#)
- [Immunofluorescence](#)
- [Immunoprecipitation](#)
- [Flow Cytometry](#)
- [Cell Culture](#)