

**CCDC62 Antibody (C-term)**  
**Affinity Purified Rabbit Polyclonal Antibody (Pab)**  
**Catalog # AP5157b**

**Specification**

**CCDC62 Antibody (C-term) - Product Information**

Application	<b>WB, IHC-P,E</b>
Primary Accession	<a href="#">Q6P9F0</a>
Reactivity	<b>Human</b>
Host	<b>Rabbit</b>
Clonality	<b>Polyclonal</b>
Isotype	<b>Rabbit Ig</b>
Calculated MW	<b>77748</b>
Antigen Region	<b>651-679</b>

**CCDC62 Antibody (C-term) - Additional Information**

**Gene ID** 84660

**Other Names**

Coiled-coil domain-containing protein 62,  
Protein TSP-NY, Protein aaa, CCDC62

**Target/Specificity**

This CCDC62 antibody is generated from rabbits immunized with a KLH conjugated synthetic peptide between 651-679 amino acids from the C-terminal region of human CCDC62.

**Dilution**

WB~~1:1000  
IHC-P~~1:50~100

**Format**

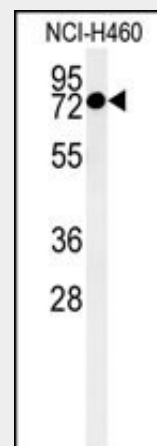
Purified polyclonal antibody supplied in PBS with 0.09% (W/V) sodium azide. This antibody is purified through a protein A column, followed by peptide affinity purification.

**Storage**

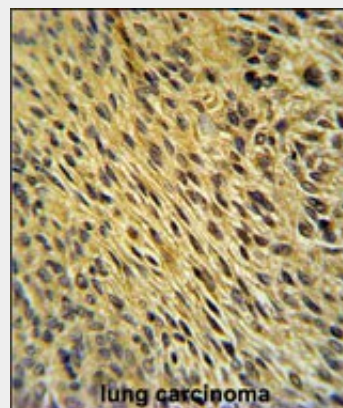
Maintain refrigerated at 2-8°C for up to 2 weeks. For long term storage store at -20°C in small aliquots to prevent freeze-thaw cycles.

**Precautions**

CCDC62 Antibody (C-term) is for research use only and not for use in diagnostic or



Western blot analysis of CCDC62 Antibody (C-term) (Cat. #AP5157b) in NCI-H460 cell line lysates (35ug/lane).CCDC62 (arrow) was detected using the purified Pab.



CCDC62 Antibody (C-term) (Cat. #AP5157b) immunohistochemistry analysis in formalin fixed and paraffin embedded human lung carcinoma followed by peroxidase conjugation of the secondary antibody and DAB staining. This data demonstrates the use of the CCDC62 Antibody (C-term) for immunohistochemistry. Clinical relevance has not been evaluated.

**CCDC62 Antibody (C-term) - Background**

The function of this protein has not been

therapeutic procedures.

specifically defined.

#### **CCDC62 Antibody (C-term) - Protein Information**

**Name** CCDC62

##### **Function**

Nuclear receptor coactivator that can enhance preferentially estrogen receptors ESR1 and ESR2 transactivation. Modulates also progesterone/PGR, glucocorticoid/NR3C1 and androgen/AR receptors transactivation, although at lower level; little effect on vitamin D receptor/VDR.

##### **Cellular Location**

Cytoplasm. Nucleus. Note=Mainly nuclear

##### **Tissue Location**

Highly expressed in adult testis. Expressed in both prostate epithelial and stromal cells, with predominant expression in epithelial cells (at protein level) (PubMed:19126643). Not detected in prostate by RT-PCR (PubMed:19165854). Overexpressed in various cancers {ECO:0000269|PubMed:19126643, ECO:0000269|PubMed:19165854, ECO:0000269|Ref.1, ECO:0000269|Ref.4}

#### **CCDC62 Antibody (C-term) - References**

Domae, S., et al. Int. J. Cancer  
124(10):2347-2352(2009)  
Chen, M., et al. Carcinogenesis  
30(5):841-850(2009)  
Chen, M., et al. Prostate  
68(12):1273-1282(2008)

#### **CCDC62 Antibody (C-term) - Protocols**

Provided below are standard protocols that you may find useful for product applications.

- [Western Blot](#)
- [Blocking Peptides](#)
- [Dot Blot](#)
- [Immunohistochemistry](#)
- [Immunofluorescence](#)
- [Immunoprecipitation](#)
- [Flow Cytometry](#)
- [Cell Culture](#)