

mTERF Antibody
Purified Rabbit Polyclonal Antibody (Pab)
Catalog # AP51875

Specification

mTERF Antibody - Product Information

Application	WB
Primary Accession	Q99551
Reactivity	Human, Mouse, Rat
Host	Rabbit
Clonality	Polyclonal
Calculated MW	39 KDa
Antigen Region	251 - 310

mTERF Antibody - Additional Information

Gene ID 7978

Other Names

Transcription termination factor 1, mitochondrial, Mitochondrial transcription termination factor 1, mTERF, mTERF1, MTERF1, MTERF

Target/Specificity

KLH conjugated synthetic peptide derived from human mTERF

Dilution

WB~~ 1:1000

Format

0.01M PBS, pH 7.2, 0.1% Sodium azide, Glycerol 50%

Storage

Store at -20 °C. Stable for 12 months from date of receipt

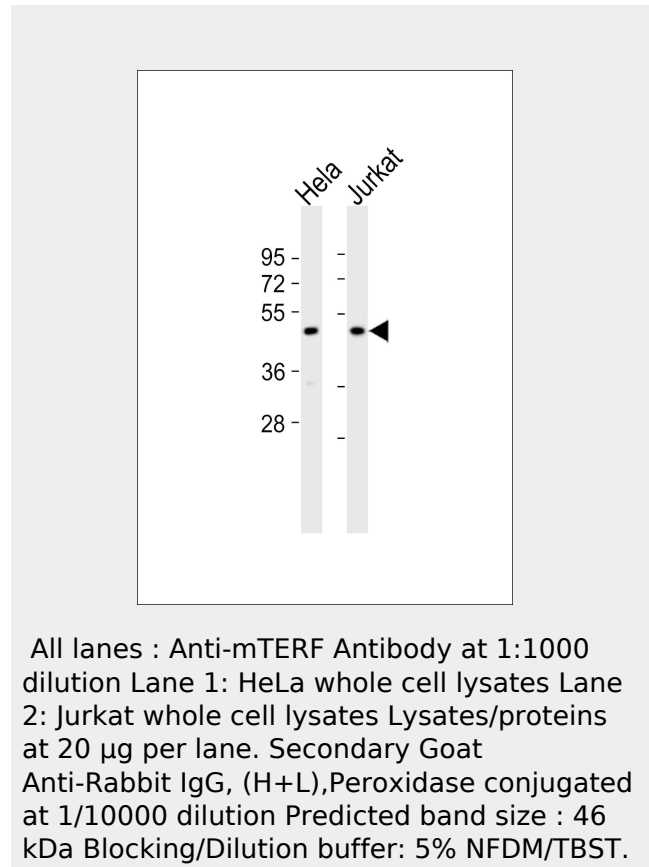
mTERF Antibody - Protein Information

Name MTERF1

Synonyms MTERF

Function

Transcription termination factor. Binds to a 28 bp region within the tRNA(Leu(uur))



mTERF Antibody - Background

Transcription termination factor. Binds to a 28 bp region within the tRNA(Leu(uur)) gene at a position immediately adjacent to and downstream of the 16S rRNA gene; this region comprises a tridecamer sequence critical for directing accurate termination. Binds DNA along the major groove and promotes DNA bending and partial unwinding. Promotes base flipping. Probably requires one or more components for termination activity.

mTERF Antibody - References

Fernandez-Silva P., et al. EMBO J. 16:1066-1079(1997).
Scherer S.W., et al. Science 300:767-772(2003).
Mural R.J., et al. Submitted (SEP-2005) to the EMBL/GenBank/DDBJ databases.

gene at a position immediately adjacent to and downstream of the 16S rRNA gene; this region comprises a tridecamer sequence critical for directing accurate termination. Binds DNA along the major groove and promotes DNA bending and partial unwinding. Promotes base flipping. Transcription termination activity appears to be polarized with highest specificity for transcripts initiated on the light strand.

Cellular Location
Mitochondrion.

Suzuki Y., et al. Submitted (APR-2005) to the EMBL/GenBank/DDBJ databases.
Hillier L.W., et al. Nature 424:157-164(2003).

mTERF Antibody - Protocols

Provided below are standard protocols that you may find useful for product applications.

- [Western Blot](#)
- [Blocking Peptides](#)
- [Dot Blot](#)
- [Immunohistochemistry](#)
- [Immunofluorescence](#)
- [Immunoprecipitation](#)
- [Flow Cytometry](#)
- [Cell Culture](#)