

**SF1 (Phospho-Ser82) Antibody**  
Purified Rabbit Polyclonal Antibody (Pab)  
Catalog # AP52392

**Specification**

**SF1 (Phospho-Ser82) Antibody - Product Information**

Application **WB, IHC**  
Primary Accession [O15637](#)  
Reactivity **Human, Mouse, Rat**  
Host **Rabbit**  
Clonality **Polyclonal**  
Calculated MW **68330**

**SF1 (Phospho-Ser82) Antibody - Additional Information**

**Gene ID 7536**

**Other Names**

Splicing factor 1, Mammalian branch point-binding protein, BBP, mBBP, Transcription factor ZFM1, Zinc finger gene in MEN1 locus, Zinc finger protein 162, SF1, ZFM1, ZNF162

**Dilution**

WB~~1:1000  
IHC~~1:50~100

**Format**

Rabbit IgG in phosphate buffered saline (without Mg<sup>2+</sup> and Ca<sup>2+</sup>), pH 7.4, 150mM NaCl, 0.09% (W/V) sodium azide and 50% glycerol.

**Storage Conditions**

-20°C

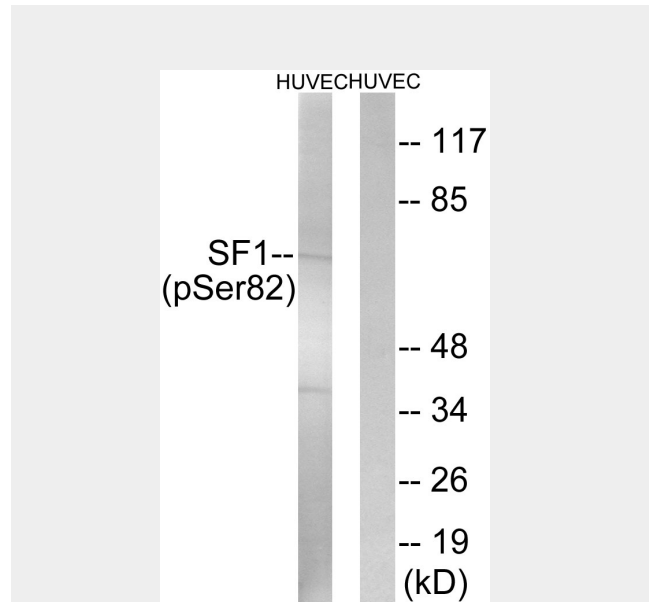
**SF1 (Phospho-Ser82) Antibody - Protein Information**

**Name** SF1

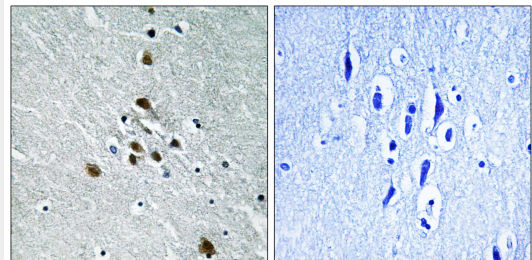
**Synonyms** ZFM1, ZNF162

**Function**

Necessary for the ATP-dependent first step of spliceosome assembly. Binds to the



Western blot analysis of extracts from HUVEC cells, treated with anisomycin (25ug/ml, 30mins), using SF1 (Phospho-Ser82) antibody.



Immunohistochemistry analysis of paraffin-embedded human brain tissue using SF1 (Phospho-Ser82) antibody

**SF1 (Phospho-Ser82) Antibody - Background**

Necessary for the ATP-dependent first step of spliceosome assembly. Binds to the intron branch point sequence (BPS) 5'-UACUAAC-3' of the pre-mRNA. May act as transcription repressor.

**SF1 (Phospho-Ser82) Antibody -**

intron branch point sequence (BPS)  
5'-UACUAAC-3' of the pre-mRNA. May act as  
transcription repressor.

**Cellular Location**  
Nucleus.

**Tissue Location**  
Detected in lung, ovary, adrenal gland,  
colon, kidney, muscle, pancreas, thyroid,  
placenta, brain, liver and heart

## References

Arning S.,et al.RNA 2:794-810(1996).  
Caslini C.,et al.Genomics 42:268-277(1997).  
Toda T.,et al.Hum. Mol. Genet.  
3:465-470(1994).  
Ota T.,et al.Nat. Genet. 36:40-45(2004).  
Taylor T.D.,et al.Nature 440:497-500(2006).

## SF1 (Phospho-Ser82) Antibody - Protocols

Provided below are standard protocols that you  
may find useful for product applications.

- [Western Blot](#)
- [Blocking Peptides](#)
- [Dot Blot](#)
- [Immunohistochemistry](#)
- [Immunofluorescence](#)
- [Immunoprecipitation](#)
- [Flow Cytometry](#)
- [Cell Culture](#)