

**ATP5J2 Antibody (Center)**  
**Affinity Purified Rabbit Polyclonal Antibody (Pab)**  
**Catalog # AP5346c**

**Specification**

**ATP5J2 Antibody (Center) - Product Information**

|                   |                             |
|-------------------|-----------------------------|
| Application       | <b>WB, IHC-P,E</b>          |
| Primary Accession | <a href="#">P56134</a>      |
| Other Accession   | <a href="#">NP_004880.1</a> |
| Reactivity        | <b>Human</b>                |
| Host              | <b>Rabbit</b>               |
| Clonality         | <b>Polyclonal</b>           |
| Isotype           | <b>Rabbit Ig</b>            |
| Calculated MW     | <b>10918</b>                |
| Antigen Region    | <b>18-46</b>                |

**ATP5J2 Antibody (Center) - Additional Information**

**Gene ID** 9551

**Other Names**

ATP synthase subunit f, mitochondrial,  
ATP5J2, ATP5JL

**Target/Specificity**

This ATP5J2 antibody is generated from rabbits immunized with a KLH conjugated synthetic peptide between 18-46 amino acids from the Central region of human ATP5J2.

**Dilution**

WB~~1:1000  
IHC-P~~1:50~100

**Format**

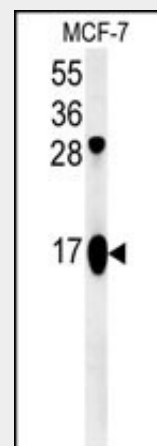
Purified polyclonal antibody supplied in PBS with 0.09% (W/V) sodium azide. This antibody is purified through a protein A column, followed by peptide affinity purification.

**Storage**

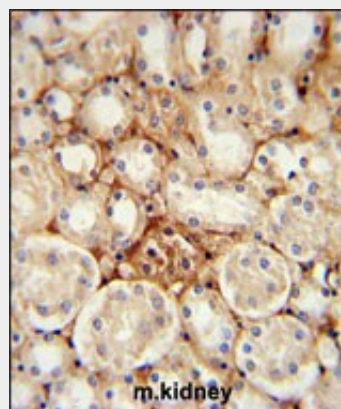
Maintain refrigerated at 2-8°C for up to 2 weeks. For long term storage store at -20°C in small aliquots to prevent freeze-thaw cycles.

**Precautions**

ATP5J2 Antibody (Center) is for research use



ATP5J2 Antibody (Center) (Cat. #AP5346c) western blot analysis in MCF-7 cell line lysates (35ug/lane). This demonstrates the ATP5J2 antibody detected the ATP5J2 protein (arrow).



ATP5J2 Antibody (Center) (Cat. #AP5346c) immunohistochemistry analysis in formalin fixed and paraffin embedded mouse kidney tissue followed by peroxidase conjugation of the secondary antibody and DAB staining. This data demonstrates the use of the ATP5J2 Antibody (Center) for immunohistochemistry. Clinical relevance has not been evaluated.

**ATP5J2 Antibody (Center) - Background**

Mitochondrial ATP synthase catalyzes ATP

only and not for use in diagnostic or therapeutic procedures.

#### **ATP5J2 Antibody (Center) - Protein Information**

**Name** ATP5MF ([HGNC:848](#))

**Synonyms** ATP5J2, ATP5JL

#### **Function**

Mitochondrial membrane ATP synthase (F(1)F(0) ATP synthase or Complex V) produces ATP from ADP in the presence of a proton gradient across the membrane which is generated by electron transport complexes of the respiratory chain. F-type ATPases consist of two structural domains, F(1) - containing the extramembraneous catalytic core and F(0) - containing the membrane proton channel, linked together by a central stalk and a peripheral stalk. During catalysis, ATP synthesis in the catalytic domain of F(1) is coupled via a rotary mechanism of the central stalk subunits to proton translocation. Part of the complex F(0) domain. Minor subunit located with subunit a in the membrane.

#### **Cellular Location**

Mitochondrion. Mitochondrion inner membrane; Single-pass membrane protein

synthesis, utilizing an electrochemical gradient of protons across the inner membrane during oxidative phosphorylation. It is composed of two linked multi-subunit complexes: the soluble catalytic core, F1, and the membrane-spanning component, F0, which comprises the proton channel. The catalytic portion of mitochondrial ATP synthase consists of 5 different subunits (alpha, beta, gamma, delta, and epsilon) assembled with a stoichiometry of 3 alpha, 3 beta, and single representatives of the gamma, delta, and epsilon subunits. The proton channel likely has nine subunits (a, b, c, d, e, f, g, F6 and 8). This gene encodes the f subunit of the F0 complex.

#### **ATP5J2 Antibody (Center) - References**

Wang, L., et al. Cancer Epidemiol. Biomarkers Prev. 17(12):3558-3566(2008)  
Stelzl, U., et al. Cell 122(6):957-968(2005)  
Cross, R.L. Nature 427(6973):407-408(2004)

#### **ATP5J2 Antibody (Center) - Protocols**

Provided below are standard protocols that you may find useful for product applications.

- [Western Blot](#)
- [Blocking Peptides](#)
- [Dot Blot](#)
- [Immunohistochemistry](#)
- [Immunofluorescence](#)
- [Immunoprecipitation](#)
- [Flow Cytometry](#)
- [Cell Culture](#)