

**UBAC1 Antibody (C-term)**  
**Affinity Purified Rabbit Polyclonal Antibody (Pab)**  
**Catalog # AP5353b**

**Specification**

**UBAC1 Antibody (C-term) - Product Information**

Application	WB, IHC-P, FC,E
Primary Accession	<a href="#">Q9BSL1</a>
Other Accession	<a href="#">NP_057256.2</a>
Reactivity	Human
Host	Rabbit
Clonality	Polyclonal
Isotype	Rabbit Ig
Calculated MW	45338
Antigen Region	264-292

**UBAC1 Antibody (C-term) - Additional Information**

**Gene ID** 10422

**Other Names**

Ubiquitin-associated domain-containing protein 1, UBA domain-containing protein 1, E3 ubiquitin-protein ligase subunit KPC2, Glioblastoma cell differentiation-related protein 1, Kip1 ubiquitination-promoting complex protein 2, UBAC1, GBDR1, KPC2, UBADC1

**Target/Specificity**

This UBAC1 antibody is generated from rabbits immunized with a KLH conjugated synthetic peptide between 264-292 amino acids from the C-terminal region of human UBAC1.

**Dilution**

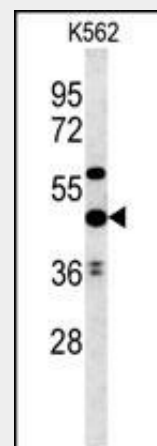
WB~~1:1000  
IHC-P~~1:50~100  
FC~~1:10~50

**Format**

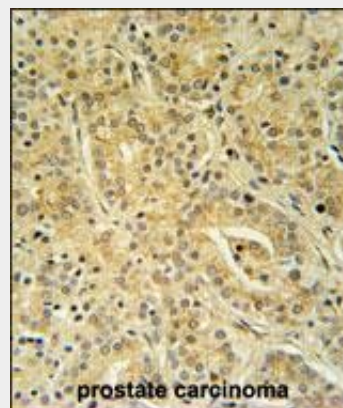
Purified polyclonal antibody supplied in PBS with 0.09% (W/V) sodium azide. This antibody is purified through a protein A column, followed by peptide affinity purification.

**Storage**

Maintain refrigerated at 2-8°C for up to 2 weeks. For long term storage store at -20°C



UBAC1 Antibody (C-term) (Cat. #AP5353b) western blot analysis in K562 cell line lysates (35ug/lane). This demonstrates the UBAC1 antibody detected the UBAC1 protein (arrow).



UBAC1 Antibody (C-term) (Cat. #AP5353b) immunohistochemistry analysis in formalin fixed and paraffin embedded human prostate carcinoma followed by peroxidase conjugation of the secondary antibody and DAB staining. This data demonstrates the use of the UBAC1 Antibody (C-term) for immunohistochemistry. Clinical relevance has not been evaluated.

in small aliquots to prevent freeze-thaw cycles.

#### Precautions

UBAC1 Antibody (C-term) is for research use only and not for use in diagnostic or therapeutic procedures.

#### UBAC1 Antibody (C-term) - Protein Information

**Name** UBAC1

**Synonyms** GBDR1, KPC2, UBADC1

#### Function

Non-catalytic subunit of the KPC complex that acts as E3 ubiquitin-protein ligase. Required for poly-ubiquitination and proteasome-mediated degradation of CDKN1B during G1 phase of the cell cycle.

#### Cellular Location

Cytoplasm

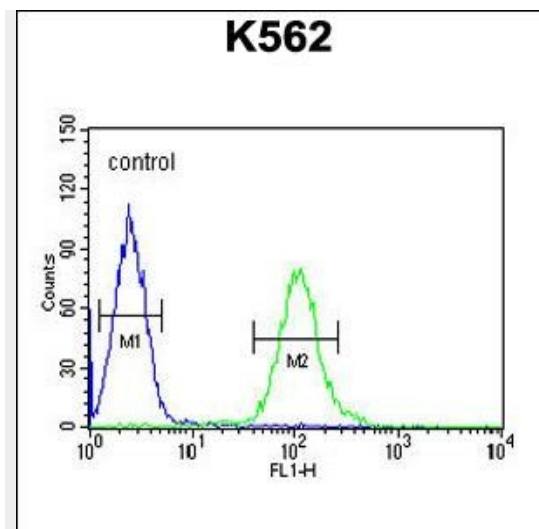
#### Tissue Location

Ubiquitous..

#### UBAC1 Antibody (C-term) - Protocols

Provided below are standard protocols that you may find useful for product applications.

- [Western Blot](#)
- [Blocking Peptides](#)
- [Dot Blot](#)
- [Immunohistochemistry](#)
- [Immunofluorescence](#)
- [Immunoprecipitation](#)
- [Flow Cytometry](#)
- [Cell Culture](#)



UBAC1 Antibody (C-term) (Cat. #AP5353b) flow cytometric analysis of K562 cells (right histogram) compared to a negative control cell (left histogram). FITC-conjugated goat-anti-rabbit secondary antibodies were used for the analysis.

#### UBAC1 Antibody (C-term) - Background

UBAC1 belongs to the subfamily of ubiquitously expressed heterogeneous nuclear ribonucleoproteins (hnRNPs). The hnRNPs are RNA binding proteins and they complex with heterogeneous nuclear RNA (hnRNA). These proteins are associated with pre-mRNAs in the nucleus and appear to influence pre-mRNA processing and other aspects of mRNA metabolism and transport. While all of the hnRNPs are present in the nucleus, some seem to shuttle between the nucleus and the cytoplasm. The hnRNP proteins have distinct nucleic acid binding properties. The protein has two RRM domains that bind to RNAs.

#### UBAC1 Antibody (C-term) - References

Walker, L.C., et al. Breast Cancer Res. Treat. 112(2):229-236(2008)  
Wu, Y.Y., et al. Cell Biochem. Funct. 26(4):467-477(2008)  
Reboll, M.R., et al. RNA 13(8):1328-1340(2007)