

Anti-SCD Antibody Catalog # AP53832

Specification

Anti-SCD Antibody - Product Information

Application	WB
Primary Accession	O00767
Reactivity	Human, Mouse, Rat
Host	Rabbit
Clonality	Polyclonal
Calculated MW	41523

Anti-SCD Antibody - Additional Information

Gene ID 6319

Other Names

Acyl-CoA desaturase; Delta(9)-desaturase; Delta-9 desaturase; Fatty acid desaturase; Stearoyl-CoA desaturase

Target/Specificity

Recognizes endogenous levels of SCD protein.

Dilution

WB~~1/500 - 1/1000

Format

Liquid in 0.42% Potassium phosphate, 0.87% Sodium chloride, pH 7.3, 30% glycerol, and 0.01% sodium azide.

Storage

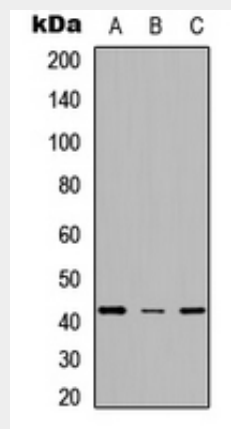
Store at -20 °C. Stable for 12 months from date of receipt

Anti-SCD Antibody - Protein Information

Name SCD

Function

Stearoyl-CoA desaturase that utilizes O(2) and electrons from reduced cytochrome b5 to introduce the first double bond into saturated fatty acyl-CoA substrates (PubMed: <a href="http://www.uniprot.org/citations/15907797"



Western blot analysis of SCD expression in HeLa (A), NS-1 (B), PC12 (C) whole cell lysates.

Anti-SCD Antibody - Background

Rabbit polyclonal antibody to SCD

target="_blank">15907797,
PubMed:<a href="http://www.uniprot.org/citations/18765284"
target="_blank">18765284).
Catalyzes the insertion of a cis double bond
at the delta-9 position into fatty acyl-CoA
substrates including palmitoyl-CoA and
stearoyl-CoA (PubMed:<a href="http://www
.uniprot.org/citations/15907797"
target="_blank">15907797,
PubMed:<a href="http://www.uniprot.org/citations/18765284"
target="_blank">18765284). Gives
rise to a mixture of 16:1 and 18:1
unsaturated fatty acids (PubMed:<a href="http://www.uniprot.org/citations/15610069"
target="_blank">15610069). Plays an
important role in lipid biosynthesis. Plays an
important role in regulating the expression
of genes that are involved in lipogenesis
and in regulating mitochondrial fatty acid
oxidation (By similarity). Plays an important
role in body energy homeostasis (By
similarity). Contributes to the biosynthesis
of membrane phospholipids, cholesterol
esters and triglycerides (By similarity).

Cellular Location

Endoplasmic reticulum membrane;
Multi-pass membrane protein
{ECO:0000269|PubMed:18765284,
ECO:0000305}

Tissue Location

Detected in fetal liver, lung and brain.
Highly expressed in adult adipose tissue,
and at lower levels in adult brain and lung.

Anti-SCD Antibody - Protocols

Provided below are standard protocols that you
may find useful for product applications.

- [Western Blot](#)
- [Blocking Peptides](#)
- [Dot Blot](#)
- [Immunohistochemistry](#)
- [Immunofluorescence](#)
- [Immunoprecipitation](#)
- [Flow Cytometry](#)
- [Cell Culture](#)