

Anti-SEN54 Antibody

Catalog # AP53924

Specification

Anti-SEN54 Antibody - Product Information

Application	WB, IH
Primary Accession	Q7Z6J9
Reactivity	Human, Mouse, Rat
Host	Rabbit
Clonality	Polyclonal
Calculated MW	58819

Anti-SEN54 Antibody - Additional Information

Gene ID 283989

Other Names

SEN54; tRNA-splicing endonuclease subunit
Sen54; SEN54 homolog; HsSEN54;
tRNA-intron endonuclease Sen54

Target/Specificity

Recognizes endogenous levels of SEN54 protein.

Dilution

WB~~1/500 - 1/1000
IH~~1/50 - 1/200

Format

Liquid in 0.42% Potassium phosphate,
0.87% Sodium chloride, pH 7.3, 30%
glycerol, and 0.01% sodium azide.

Storage

Store at -20 °C. Stable for 12 months from
date of receipt

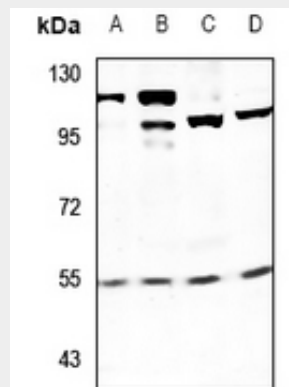
Anti-SEN54 Antibody - Protein Information

Name TSEN54

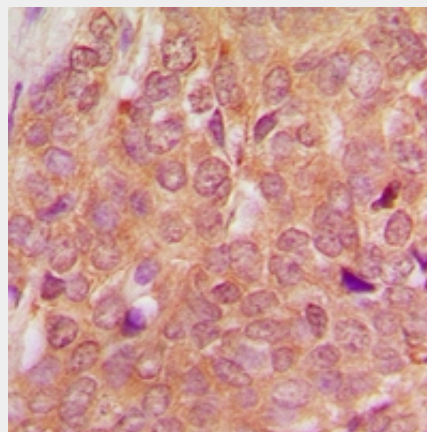
Synonyms SEN54

Function

Non-catalytic subunit of the tRNA-splicing
endonuclease complex, a complex
responsible for identification and cleavage



Western blot analysis of SEN54 expression in MCF7 (A), HEK293T (B), PC12 (C), BV2 (D) whole cell lysates.



Immunohistochemical analysis of SEN54 staining in human breast cancer formalin fixed paraffin embedded tissue section. The section was pre-treated using heat mediated antigen retrieval with sodium citrate buffer (pH 6.0). The section was then incubated with the antibody at room temperature and detected using an HRP conjugated compact polymer system. DAB was used as the chromogen. The section was then counterstained with haematoxylin and mounted with DPX.

Anti-SEN54 Antibody - Background

of the splice sites in pre-tRNA. It cleaves pre-tRNA at the 5' and 3' splice sites to release the intron. The products are an intron and two tRNA half-molecules bearing 2',3' cyclic phosphate and 5'-OH termini. There are no conserved sequences at the splice sites, but the intron is invariably located at the same site in the gene, placing the splice sites an invariant distance from the constant structural features of the tRNA body. The tRNA splicing endonuclease is also involved in mRNA processing via its association with pre-mRNA 3'-end processing factors, establishing a link between pre-tRNA splicing and pre-mRNA 3'-end formation, suggesting that the endonuclease subunits function in multiple RNA-processing events.

Rabbit polyclonal antibody to SEN54

Cellular Location

Nucleus. Nucleus, nucleolus. Note=May be transiently localized in the nucleolus

Anti-SEN54 Antibody - Protocols

Provided below are standard protocols that you may find useful for product applications.

- [Western Blot](#)
- [Blocking Peptides](#)
- [Dot Blot](#)
- [Immunohistochemistry](#)
- [Immunofluorescence](#)
- [Immunoprecipitation](#)
- [Flow Cytometry](#)
- [Cell Culture](#)