

Anti-Cytokeratin-5/6 Antibody

Catalog # AP53999

Specification

Anti-Cytokeratin-5/6 Antibody - Product Information

Application	WB
Primary Accession	P13647
Other Accession	P02538 , P04259 , P48668
Reactivity	Human, Mouse, Rat
Host	Rabbit
Clonality	Polyclonal
Calculated MW	62378

Anti-Cytokeratin-5/6 Antibody - Additional Information

Gene ID 3852

Other Names

Keratin type II cytoskeletal 5; 58 kDa cyto­keratin; Cytokeratin-5; CK-5; Keratin-5; K5; Type-II keratin Kb5

Target/Specificity

Recognizes endogenous levels of Cytokeratin-5/6 protein.

Dilution

WB ~ 1/500 - 1/1000

Format

Liquid in 0.42% Potassium phosphate, 0.87% Sodium chloride, pH 7.3, 30% glycerol, and 0.01% sodium azide.

Storage

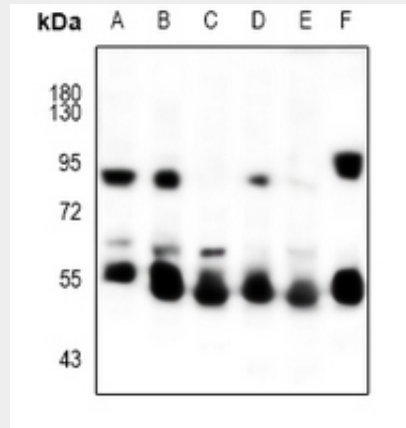
Store at -20 °C. Stable for 12 months from date of receipt

Anti-Cytokeratin-5/6 Antibody - Protein Information

Name KRT5

Tissue Location

Expressed in corneal epithelium (at protein level).



Western blot analysis of Cytokeratin-5/6 expression in A375 (A), EC9706 (B), Hela (C), MCF7 (D), PC3 (E), rat ovary (F) whole cell lysates.

Anti-Cytokeratin-5/6 Antibody - Background

Rabbit polyclonal antibody to Cytokeratin-5/6

Anti-Cytokeratin-5/6 Antibody - Protocols

Provided below are standard protocols that you may find useful for product applications.

- [Western Blot](#)
- [Blocking Peptides](#)
- [Dot Blot](#)
- [Immunohistochemistry](#)
- [Immunofluorescence](#)
- [Immunoprecipitation](#)
- [Flow Cytometry](#)
- [Cell Culture](#)