

Anti-CDC50C Antibody

Catalog # AP54030

Specification

Anti-CDC50C Antibody - Product Information

Application	WB, IF
Primary Accession	A0ZSE6
Reactivity	Human
Host	Rabbit
Clonality	Polyclonal
Calculated MW	13039

Anti-CDC50C Antibody - Additional Information

Other Names

TMEM30C; CDC50C; Cell cycle control protein 50C; Transmembrane protein 30C

Target/Specificity

Recognizes endogenous levels of CDC50C protein.

Dilution

WB~~1/500 - 1/1000
IF~~1/50 - 1/200

Format

Liquid in 0.42% Potassium phosphate, 0.87% Sodium chloride, pH 7.3, 30% glycerol, and 0.01% sodium azide.

Storage

Store at -20 °C. Stable for 12 months from date of receipt

Anti-CDC50C Antibody - Protein Information

Name TMEM30CP ([HGNC:30443](#))

Synonyms CDC50C, TMEM30C

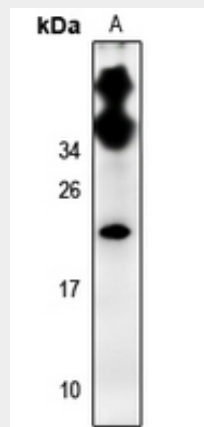
Cellular Location

Membrane; Single-pass membrane protein

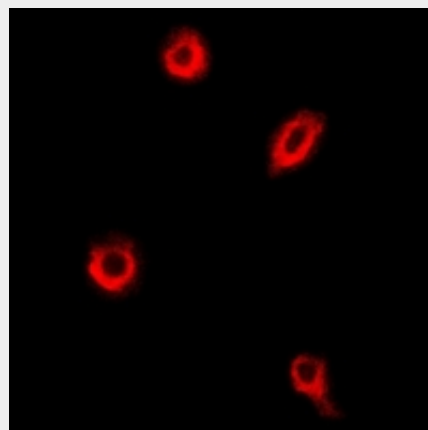
Tissue Location

Specifically expressed in testis.

Anti-CDC50C Antibody - Protocols



Western blot analysis of CDC50C expression in K562 (A) whole cell lysates.



Immunofluorescent analysis of CDC50C staining in MCF7 cells. Formalin-fixed cells were permeabilized with 0.1% Triton X-100 in TBS for 5-10 minutes and blocked with 3% BSA-PBS for 30 minutes at room temperature. Cells were probed with the primary antibody in 3% BSA-PBS and incubated overnight at 4 °C in a humidified chamber. Cells were washed with PBST and incubated with a Alexa Fluor 594-conjugated secondary antibody (red) in PBS at room temperature in the dark.

Anti-CDC50C Antibody - Background

Rabbit polyclonal antibody to CDC50C

Provided below are standard protocols that you may find useful for product applications.

- [Western Blot](#)
- [Blocking Peptides](#)
- [Dot Blot](#)
- [Immunohistochemistry](#)
- [Immunofluorescence](#)
- [Immunoprecipitation](#)
- [Flow Cytometry](#)
- [Cell Culture](#)