

Rab17 Polyclonal Antibody
Purified Rabbit Polyclonal Antibody (Pab)
Catalog # AP54433

Specification

Rab17 Polyclonal Antibody - Product Information

| | |
|-------------------|------------------------|
| Application | WB |
| Primary Accession | Q9H0T7 |
| Reactivity | Rat, Dog |
| Host | Rabbit |
| Clonality | Polyclonal |
| Calculated MW | 23491 |

Rab17 Polyclonal Antibody - Additional Information

Gene ID 64284

Other Names

Ras-related protein Rab-17, RAB17

Format

0.01M TBS(pH7.4) with 1% BSA, 0.09% (W/V) sodium azide and 50% Glyce

Storage

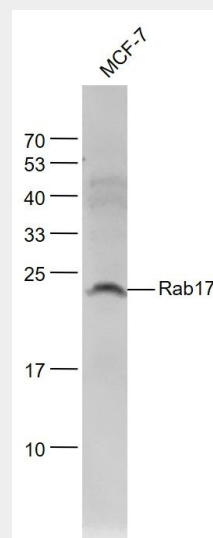
Store at -20 °C for one year. Avoid repeated freeze/thaw cycles. When reconstituted in sterile pH 7.4 0.01M PBS or diluent of antibody the antibody is stable for at least two weeks at 2-4 °C.

Rab17 Polyclonal Antibody - Protein Information

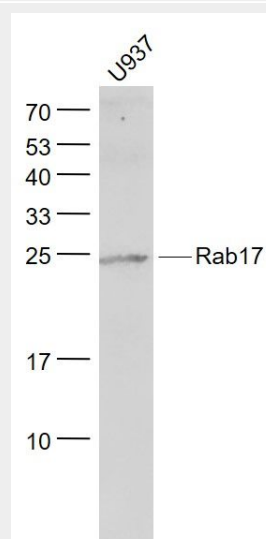
Name RAB17

Function

The small GTPases Rab are key regulators of intracellular membrane trafficking, from the formation of transport vesicles to their fusion with membranes. Rabs cycle between an inactive GDP-bound form and an active GTP-bound form that is able to recruit to membranes different set of downstream effectors directly responsible for vesicle formation, movement, tethering and fusion. That Rab is involved in transcytosis, the directed movement of endocytosed material through the cell and



Sample:
MCF-7(Human) Cell Lysate at 30 ug
Primary: Anti-Rab17 (bs-11243R) at 1/1000 dilution
Secondary: IRDye800CW Goat Anti-Rabbit IgG at 1/20000 dilution
Predicted band size: 23 kD
Observed band size: 23 kD



Sample:
U937(Human) Cell Lysate at 30 ug

its exocytosis from the plasma membrane at the opposite side. Mainly observed in epithelial cells, transcytosis mediates for instance, the transcellular transport of immunoglobulins from the basolateral surface to the apical surface. Most probably controls membrane trafficking through apical recycling endosomes in a post-endocytic step of transcytosis. Required for melanosome transport and release from melanocytes, it also regulates dendrite and dendritic spine development (By similarity). May also play a role in cell migration.

Cellular Location

Recycling endosome membrane

{ECO:0000250|UniProtKB:P35292};

Lipid-anchor; Cytoplasmic side.

Melanosome

{ECO:0000250|UniProtKB:P35292}. Cell

projection, dendrite

{ECO:0000250|UniProtKB:P35292}.

Note=May also localize at the basolateral and apical plasma membrane. In neurons, localizes to the cell body and dendritic shaft and spine

{ECO:0000250|UniProtKB:P35292}

Tissue Location

Expressed in melanocytes (at protein level).

Primary: Anti- Rab17 (bs-11243R) at 1/1000 dilution

Secondary: IRDye800CW Goat Anti-Rabbit IgG at 1/20000 dilution

Predicted band size: 23 kD

Observed band size: 23 kD

Rab17 Polyclonal Antibody - Protocols

Provided below are standard protocols that you may find useful for product applications.

- [Western Blot](#)
- [Blocking Peptides](#)
- [Dot Blot](#)
- [Immunohistochemistry](#)
- [Immunofluorescence](#)
- [Immunoprecipitation](#)
- [Flow Cytometry](#)
- [Cell Culture](#)